

LED Linear Light FL300-SL300-1S-4W-830-55D



Light Output Ratio:	100.0%	
Luminaire Power:	5.45 W	
SHR Nominal:	0.75	Calculated using the TM5
SHR Maximum:	0.85	fine grid method.

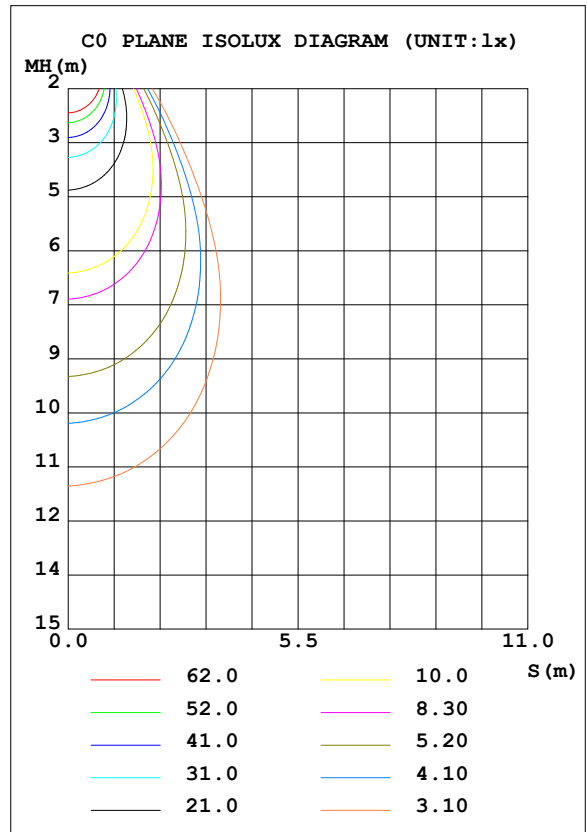
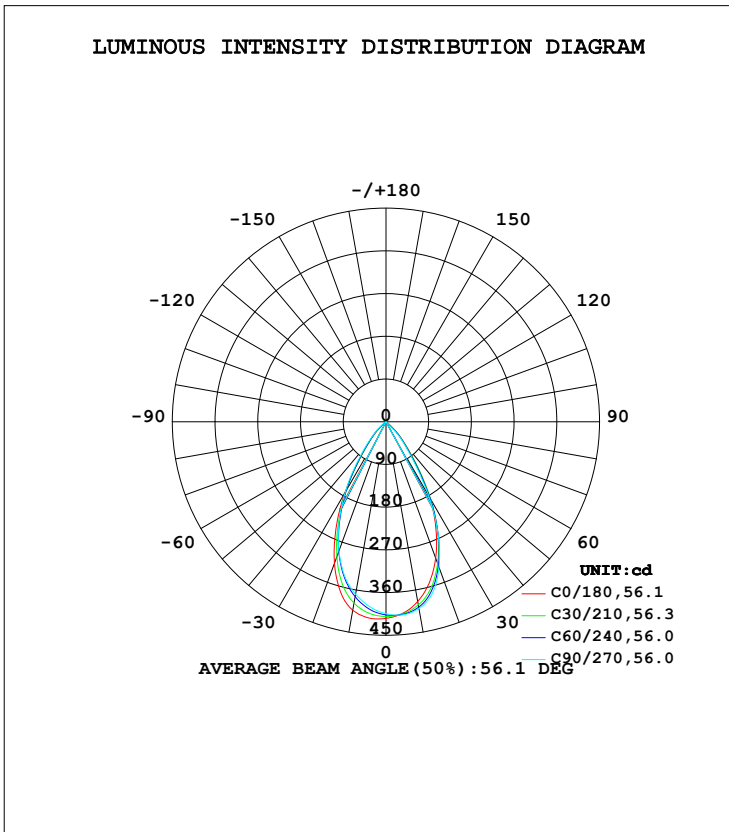
C Range: 0 - 360DEG
C Interval: 15.0DEG
Test Speed: HIGH
Temperature: 25.3DEG
Operators: Myles
Test Date: 2018-12-20

γ Range: 0 - 90DEG
 γ Interval: 1.0DEG
Test System: EVERFINE GO-2000B_V1 SYSTEM V2.0.362
Humidity: 56%
Test Distance: 5.850m [K=1.0000]
Remarks:

LUMINAIRE PHOTOMETRIC TEST REPORT

Test:U:221.1V I:0.0311A P:5.450W PF:0.7900 Freq:49.90Hz Lamp Flux:341.917x1 lm		
NAME: FL300-SL300-1S-4W-830-55D	TYPE:Linear Light	SERIAL No.:
SPEC.:3000K	DIM.: φ54mm*H72mm	
MFR.: NEKO LIGHTING AG		

DATA OF LAMP		PHOTOMETRIC DATA Eff: 62.74 lm/W			
MODEL	OSRAM-3000K	I _{max} (cd)	415.9	S/MH (C0/180)	0.84
NOMINAL POWER (W)	6	LOR (%)	100.0	S/MH (C90/270)	0.84
RATED VOLTAGE (V)	220	TOTAL FLUX (lm)	341.92	η UP, DN (C0-180)	0.0, 51.0
NOMINAL FLUX (lm)	341.917	CIE CLASS	DIRECT	η UP, DN (C180-360)	0.0, 49.0
LAMPS INSIDE	1	η up (%)	0.0	CIBSE SHR NOM	0.75
TEST VOLTAGE (V)	220	η down (%)	100.0	CIBSE SHR MAX	0.85



C Range: 0 - 360DEG
C Interval: 15.0DEG
Test Speed: HIGH
Temperature: 25.3DEG
Operators: Myles
Test Date: 2018-12-20

γ Range: 0 - 90DEG
γ Interval: 1.0DEG
Test System: EVERFINE GO-2000B_V1 SYSTEM V2.0.362
Humidity: 56%
Test Distance: 5.850m [K=1.0000]
Remarks:

ZONAL FLUX DIAGRAM

ZONAL FLUX DIAGRAM:

γ	C0	C45	C90	C135	C180	C225	C270	C315	γ	Φ zone	Φ total	%lum,lamp
10	384.6	395.4	399.7	400.1	403.3	379.6	369.2	365.0	0- 10	37.83	37.83	11.1,11.1
20	306.0	322.3	326.9	322.0	317.6	293.0	290.0	288.5	10- 20	98.72	136.6	39.9,39.9
30	184.4	190.2	180.2	174.5	174.5	165.8	172.5	176.9	20- 30	111.6	248.1	72.6,72.6
40	65.37	62.94	56.24	53.39	54.24	55.30	62.03	65.69	30- 40	68.16	316.3	92.5,92.5
50	7.959	6.328	4.871	4.295	4.932	6.230	8.725	9.912	40- 50	23.05	339.3	99.2,99.2
60	0.9521	0.7283	0.6188	0.4989	0.5639	0.6753	1.013	1.161	50- 60	2.391	341.7	99.9,99.9
70	0.0241	0.0044	0.0416	0.0044	0.0022	0.0350	0.0217	0.0613	60- 70	0.1798	341.9	100,100
80	0.0131	0.0044	0.0109	0.0044	0.0022	0.0153	0.0022	0.0153	70- 80	0.0140	341.9	100,100
90	0.0044	0.0044	0.0066	0.0044	0	0	0.0022	0.0044	80- 90	0.0073	341.9	100,100
100									90-100			
110									100-110			
120									110-120			
130									120-130			
140									130-140			
150									140-150			
160									150-160			
170									160-170			
180									170-180			
DEG	LUMINOUS INTENSITY:cd									UNIT:lm		

Conical surface Flux(90deg): 332.52 lm

%lum = 97.3%
%lamp = 97.3%

Conical surface Flux(120deg): 341.72 lm

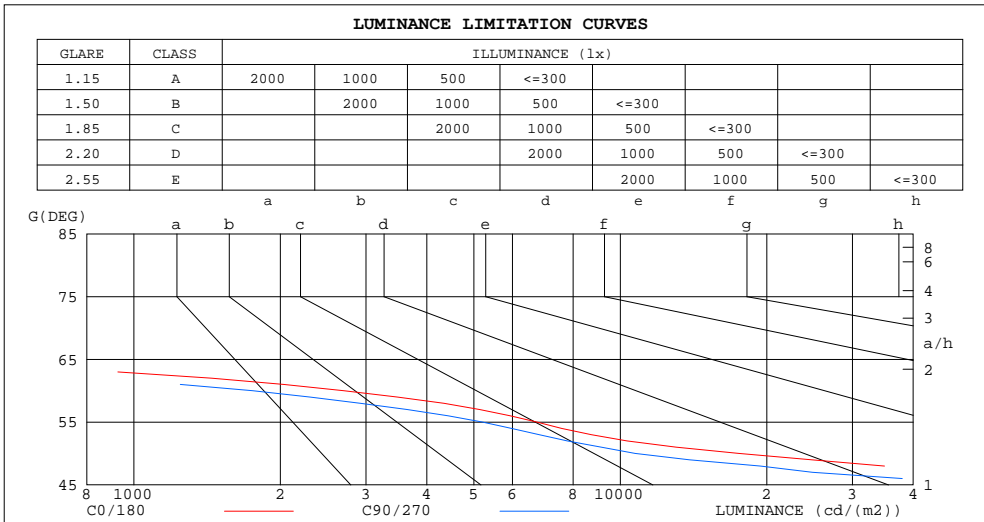
%lum = 99.9%
%lamp = 99.9%

C Range: 0 - 360DEG
C Interval: 15.0DEG
Test Speed: HIGH
Temperature:25.3DEG
Operators:Myles
Test Date:2018-12-20

γ Range: 0 - 90DEG
γ Interval: 1.0DEG
Test System:EVERFINE GO-2000B_V1 SYSTEM V2.0.362
Humidity:56%
Test Distance:5.850m [K=1.0000]
Remarks:

LUMINANCE LIMITATION CURVES

Test:U:221.1V I:0.0311A P:5.450W PF:0.7900 Freq:49.90Hz Lamp Flux:341.917x1 lm		
NAME: FL300-SL300-1S-4W-830-55D	TYPE:Linear Light	SERIAL No.:
SPEC.:3000K	DIM.: φ54mm*H72mm	
MFR.: NEKO LIGHTING AG		



LUMINANCE cd/(m2)		
G(DEG)	C0/180	C90/270
85	213	142
80	107	89
75	96	84
70	100	172
65	244	250
60	2695	1752
55	6735	5206
50	17525	10726
45	71559	47434

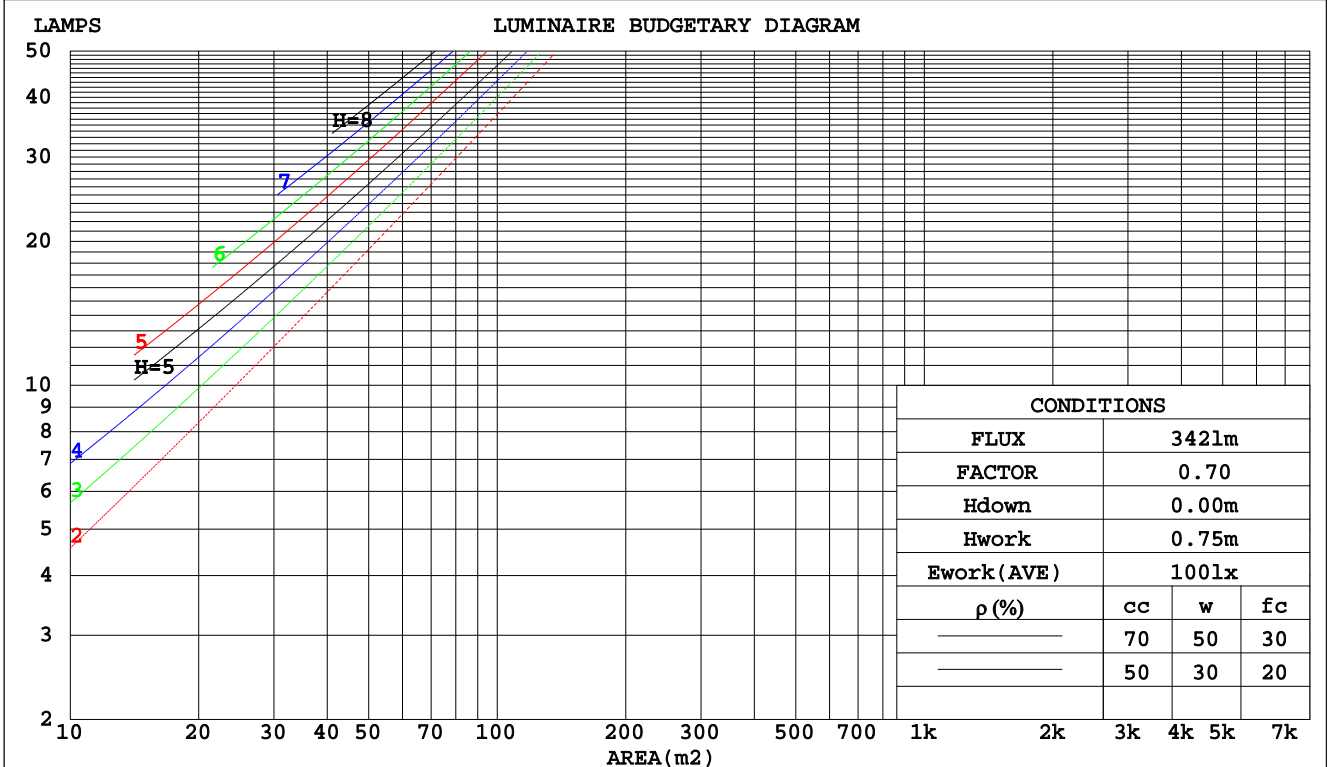
C Range: 0 - 360DEG
 C Interval: 15.0DEG
 Test Speed: HIGH
 Temperature:25.3DEG
 Operators:Myles
 Test Date:2018-12-20

γ Range: 0 - 90DEG
 γ Interval: 1.0DEG
 Test System:EVERFINE GO-2000B_V1 SYSTEM V2.0.362
 Humidity:56%
 Test Distance:5.850m [K=1.0000]
 Remarks:

CU AND LUMINAIRE BUDGETARY ESTIMATE DIAGRAM

Test:U:221.1V I:0.0311A P:5.450W PF:0.7900 Freq:49.90Hz Lamp Flux:341.917x1 lm		
NAME: FL300-SL300-1S-4W-830-55D	TYPE:Linear Light	SERIAL No.:
SPEC.:3000K	DIM.: φ54mm*H72mm	
MFR.: NEKO LIGHTING AG		

pcc	80%			70%			50%			30%			10%			0
pw	50%	30%	10%	50%	30%	10%	50%	30%	10%	50%	30%	10%	50%	30%	10%	0
pfc	20%			20%			20%			20%			20%			0
RCR	RCR:Room Cavity Ratio															
	Coefficients of Utilization(CU)															
0.0	1.19	1.19	1.19	1.16	1.16	1.16	1.11	1.11	1.11	1.06	1.06	1.06	1.02	1.02	1.02	1.00
1.0	1.11	1.08	1.06	1.09	1.07	1.05	1.05	1.03	1.01	1.01	.00	.98	.98	.97	.96	.94
2.0	1.03	.99	.96	1.02	.98	.95	.98	.95	.93	.95	.93	.91	.93	.91	.89	.87
3.0	.96	.92	.88	.95	.91	.87	.92	.89	.86	.90	.87	.84	.88	.85	.83	.81
4.0	.90	.85	.81	.89	.84	.80	.87	.83	.79	.85	.81	.78	.83	.80	.77	.76
5.0	.85	.79	.75	.84	.78	.74	.82	.77	.74	.80	.76	.73	.79	.75	.72	.71
6.0	.79	.74	.69	.79	.73	.69	.77	.72	.69	.76	.71	.68	.74	.71	.68	.66
7.0	.75	.69	.65	.74	.69	.65	.73	.68	.64	.72	.67	.64	.71	.67	.64	.62
8.0	.71	.65	.61	.70	.64	.60	.69	.64	.60	.68	.63	.60	.67	.63	.60	.58
9.0	.67	.61	.57	.66	.61	.57	.65	.60	.57	.64	.60	.56	.63	.59	.56	.55
10.0	.63	.57	.54	.63	.57	.53	.62	.57	.53	.61	.56	.53	.60	.56	.53	.52



C Range: 0 - 360DEG
 C Interval: 15.0DEG
 Test Speed: HIGH
 Temperature:25.3DEG
 Operators:Myles
 Test Date:2018-12-20

γ Range: 0 - 90DEG
 γ Interval: 1.0DEG
 Test System:EVERFINE GO-2000B_V1 SYSTEM V2.0.362
 Humidity:56%
 Test Distance:5.850m [K=1.0000]
 Remarks:

WEC AND CCEC

Test:U:221.1V I:0.0311A P:5.450W PF:0.7900 Freq:49.90Hz Lamp Flux:341.917x1 lm		
NAME: FL300-SL300-1S-4W-830-55D	TYPE:Linear Light	SERIAL No.:
SPEC.:3000K	DIM.: φ54mm*H72mm	
MFR.: NEKO LIGHTING AG		

ρcc	80%			70%			50%			30%			10%			0
ρw	50%	30%	10%	50%	30%	10%	50%	30%	10%	50%	30%	10%	50%	30%	10%	0
ρfc	20%			20%			20%			20%			20%			0
RCR	RCR:Room Cavity Ratio						Wall Exitance Coefficients(WEC)									
0.0																
1.0	.175	.100	.032	.168	.096	.030	.156	.089	.029	.144	.083	.027	.133	.077	.025	
2.0	.168	.092	.028	.162	.089	.028	.152	.084	.026	.142	.080	.025	.133	.075	.024	
3.0	.160	.085	.026	.155	.083	.025	.146	.079	.024	.138	.076	.023	.130	.072	.022	
4.0	.153	.079	.023	.149	.078	.023	.141	.075	.022	.134	.072	.022	.127	.069	.021	
5.0	.146	.074	.022	.142	.073	.021	.136	.071	.021	.129	.068	.020	.123	.066	.020	
6.0	.140	.070	.020	.136	.069	.020	.130	.067	.019	.125	.065	.019	.120	.063	.019	
7.0	.134	.066	.019	.131	.065	.019	.125	.063	.018	.120	.062	.018	.116	.060	.018	
8.0	.128	.063	.018	.125	.062	.017	.121	.060	.017	.116	.059	.017	.112	.058	.017	
9.0	.123	.059	.017	.120	.059	.016	.116	.057	.016	.112	.056	.016	.108	.055	.016	
10.0	.118	.057	.016	.116	.056	.016	.112	.055	.015	.108	.054	.015	.105	.053	.015	

ρcc	80%			70%			50%			30%			10%			0
ρw	50%	30%	10%	50%	30%	10%	50%	30%	10%	50%	30%	10%	50%	30%	10%	0
ρfc	20%			20%			20%			20%			20%			0
RCR	RCR:Room Cavity Ratio						Ceiling Cavity Exitance Coefficients(CCEC)									
0.0	.190	.190	.190	.163	.163	.163	.111	.111	.111	.064	.064	.064	.020	.020	.020	
1.0	.171	.157	.145	.146	.135	.125	.100	.093	.086	.058	.054	.050	.018	.017	.016	
2.0	.156	.133	.113	.133	.114	.098	.091	.079	.068	.053	.046	.040	.017	.015	.013	
3.0	.143	.114	.090	.123	.098	.078	.084	.068	.055	.049	.040	.032	.016	.013	.011	
4.0	.133	.099	.073	.114	.085	.063	.079	.060	.044	.045	.035	.026	.015	.011	.009	
5.0	.125	.087	.060	.107	.075	.052	.074	.053	.037	.043	.031	.022	.014	.010	.007	
6.0	.117	.078	.050	.101	.068	.043	.069	.047	.031	.040	.028	.018	.013	.009	.006	
7.0	.111	.070	.042	.095	.061	.037	.066	.043	.026	.038	.025	.015	.012	.008	.005	
8.0	.105	.064	.036	.091	.056	.031	.063	.039	.022	.036	.023	.013	.012	.008	.004	
9.0	.100	.059	.031	.086	.051	.027	.060	.036	.019	.035	.021	.012	.011	.007	.004	
10.0	.096	.055	.027	.082	.047	.024	.057	.033	.017	.033	.020	.010	.011	.006	.003	

C Range: 0 - 360DEG
 C Interval: 15.0DEG
 Test Speed: HIGH
 Temperature:25.3DEG
 Operators:Myles
 Test Date:2018-12-20

γ Range: 0 - 90DEG
 γ Interval: 1.0DEG
 Test System:EVERFINE GO-2000B_V1 SYSTEM V2.0.362
 Humidity:56%
 Test Distance:5.850m [K=1.0000]
 Remarks:

UGR(Unified Glare Rating) Table

Test:U:221.1V I:0.0311A P:5.450W PF:0.7900 Freq:49.90Hz Lamp Flux:341.917x1 lm		
NAME: FL300-SL300-1S-4W-830-55D	TYPE:Linear Light	SERIAL No.:
SPEC.:3000K	DIM.: φ54mm*H72mm	
MFR.: NEKO LIGHTING AG		

ceiling/cavity	0.7	0.7	0.5	0.5	0.3	0.7	0.7	0.5	0.5	0.3
walls	0.5	0.3	0.5	0.3	0.3	0.5	0.3	0.5	0.3	0.3
working plane	0.2	0.2	0.2	0.2	0.2	0.2	0.2	0.2	0.2	0.2
Room dimensions	Viewed crosswise					Viewed endwise				
x = 2H y = 2H	26.2	27.2	26.5	27.3	27.5	25.7	26.7	26.0	26.8	27.0
3H	26.1	26.9	26.3	27.1	27.3	25.6	26.4	25.8	26.6	26.8
4H	26.0	26.8	26.3	27.0	27.2	25.5	26.3	25.7	26.5	26.7
6H	25.9	26.6	26.2	26.9	27.1	25.4	26.1	25.7	26.4	26.6
8H	25.8	26.6	26.1	26.8	27.1	25.3	26.1	25.6	26.3	26.6
12H	25.8	26.5	26.1	26.8	27.0	25.3	26.0	25.6	26.3	26.5
4H 2H	26.0	26.8	26.3	27.0	27.2	25.5	26.3	25.7	26.5	26.7
3H	25.8	26.5	26.1	26.8	27.0	25.3	26.0	25.6	26.3	26.5
4H	25.7	26.3	26.0	26.6	26.9	25.2	25.8	25.5	26.1	26.4
6H	25.6	26.2	26.0	26.5	26.8	25.1	25.7	25.5	26.0	26.3
8H	25.6	26.1	25.9	26.4	26.8	25.1	25.6	25.4	25.9	26.3
12H	25.5	26.0	25.9	26.3	26.7	25.0	25.5	25.4	25.8	26.2
8H 4H	25.6	26.1	25.9	26.4	26.8	25.1	25.6	25.4	25.9	26.3
6H	25.5	25.9	25.9	26.3	26.7	24.9	25.4	25.4	25.8	26.2
8H	25.4	25.8	25.8	26.2	26.6	24.9	25.3	25.3	25.7	26.1
12H	25.3	25.7	25.8	26.1	26.6	24.8	25.2	25.3	25.6	26.1
12H 4H	25.5	26.0	25.9	26.3	26.7	25.0	25.5	25.4	25.8	26.2
6H	25.4	25.8	25.8	26.2	26.6	24.9	25.3	25.3	25.7	26.1
8H	25.3	25.7	25.8	26.1	26.6	24.8	25.2	25.3	25.6	26.1
Variations with the observer position at spacings:										
S = 1.0H	+ 3.0 / -16.9					+ 2.7 / -18.5				
1.5H	+ 4.9 / -14.2					+ 5.0 / -14.0				
2.0H	+ 8.0 / -26.2					+ 7.5 / -24.6				

CIE Pub.117, 341.9 lm Total Lamp Luminous Flux Correct (8log(F/F0) = -3.7)

C Range: 0 - 360DEG
 C Interval: 15.0DEG
 Test Speed: HIGH
 Temperature:25.3DEG
 Operators:Myles
 Test Date:2018-12-20

γ Range: 0 - 90DEG
 γ Interval: 1.0DEG
 Test System:EVERFINE GO-2000B_V1 SYSTEM V2.0.362
 Humidity:56%
 Test Distance:5.850m [K=1.0000]
 Remarks:

UTILIZATION FACTORS TABLE

Test:U:221.1V I:0.0311A P:5.450W PF:0.7900 Freq:49.90Hz Lamp Flux:341.917x1 lm		
NAME: FL300-SL300-1S-4W-830-55D	TYPE:Linear Light	SERIAL No.:
SPEC.:3000K	DIM.: φ54mm*H72mm	
MFR.: NEKO LIGHTING AG		

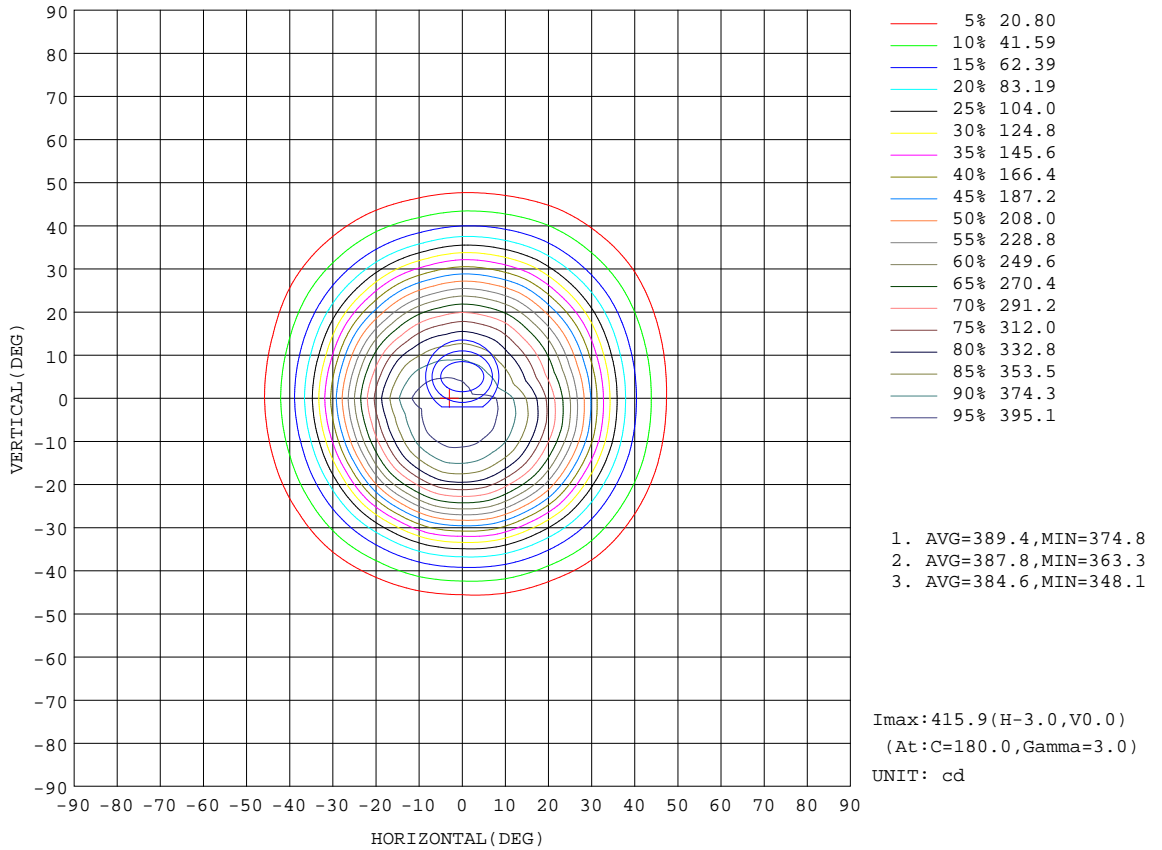
REFLECTANCE										
Ceiling	0.8	0.8	0.8	0.7	0.7	0.7	0.5	0.5	0.5	0
Walls	0.7	0.5	0.3	0.7	0.5	0.3	0.7	0.5	0.3	0
Working plane	0.2	0.2	0.2	0.2	0.2	0.2	0.2	0.2	0.2	0
ROOM INDEX	UTILIZATION FACTORS(PERCENT) $k(RI) \times RCR = 5$									
k = 0.60	87	80	77	86	80	76	86	80	76	73
0.80	94	89	85	94	88	85	93	88	84	81
1.00	99	94	90	98	93	90	97	93	89	85
1.25	103	98	95	102	97	94	100	96	93	89
1.50	106	101	98	105	101	97	103	99	96	92
2.00	109	105	101	107	104	101	105	102	99	94
2.50	110	107	104	109	105	103	106	103	101	95
3.00	112	108	106	110	107	105	107	104	102	96
4.00	114	111	109	112	109	107	108	106	105	98
5.00	115	113	111	113	111	109	109	108	106	99
ROOM INDEX	UF(total)									Direct
According to DIN EN 13032-2 2004			Suspended				SHRNOM = 1.25			

C Range: 0 - 360DEG
 C Interval: 15.0DEG
 Test Speed: HIGH
 Temperature:25.3DEG
 Operators:Myles
 Test Date:2018-12-20

γ Range: 0 - 90DEG
 γ Interval: 1.0DEG
 Test System:EVERFINE GO-2000B_V1 SYSTEM V2.0.362
 Humidity:56%
 Test Distance:5.850m [K=1.0000]
 Remarks:

ISOCANDELA DIAGRAM

Test:U:221.1V I:0.0311A P:5.450W PF:0.7900 Freq:49.90Hz Lamp Flux:341.917x1 lm		
NAME: FL300-SL300-1S-4W-830-55D	TYPE:Linear Light	SERIAL No.:
SPEC.:3000K	DIM.: φ54mm*H72mm	
MFR.: NEKO LIGHTING AG		



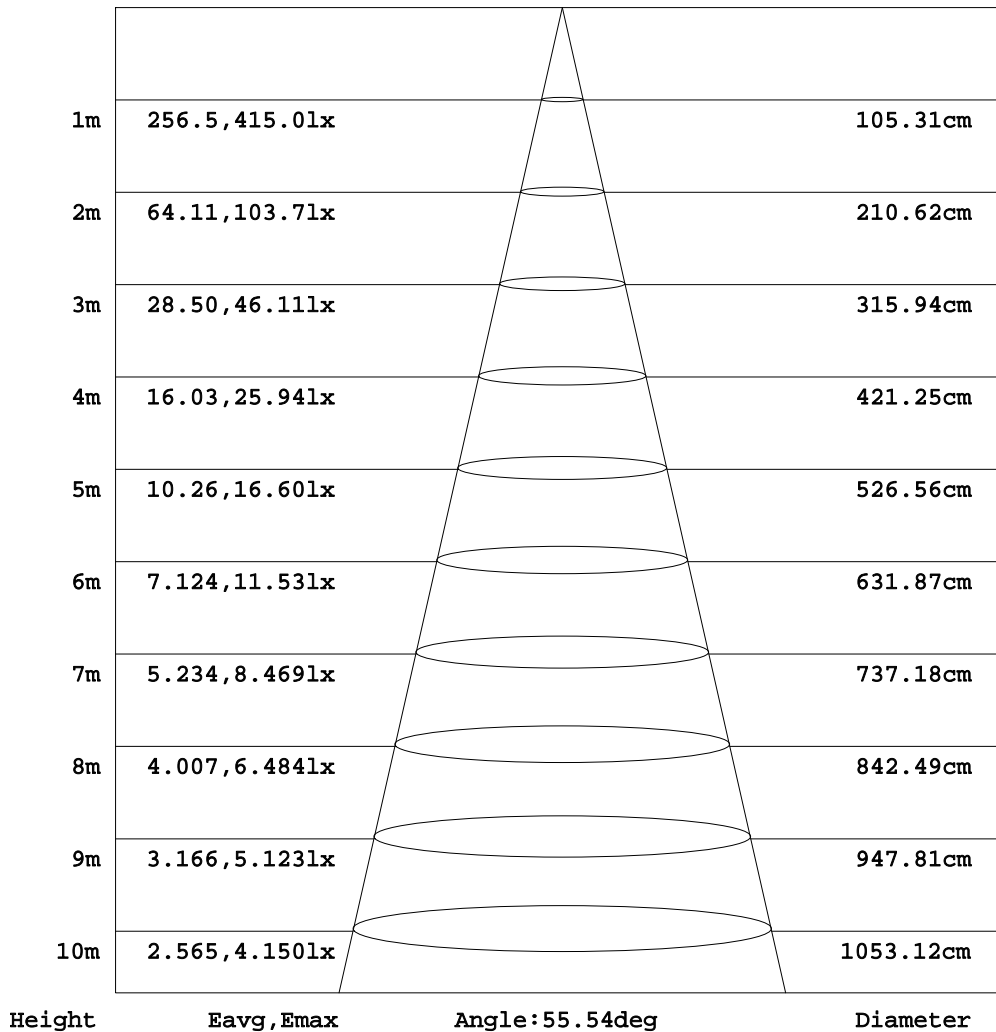
C Range: 0 - 360DEG
C Interval: 15.0DEG
Test Speed: HIGH
Temperature:25.3DEG
Operators:Myles
Test Date:2018-12-20

γ Range: 0 - 90DEG
γ Interval: 1.0DEG
Test System:EVERFINE GO-2000B_V1 SYSTEM V2.0.362
Humidity:56%
Test Distance:5.850m [K=1.0000]
Remarks:

AAI Figure

Test:U:221.1V I:0.0311A P:5.450W PF:0.7900 Freq:49.90Hz Lamp Flux:341.917x1 lm		
NAME: FL300-SL300-1S-4W-830-55D	TYPE:Linear Light	SERIAL No.:
SPEC.:3000K	DIM.: φ54mm*H72mm	
MFR.: NEKO LIGHTING AG		

Flux out:227.8 lm



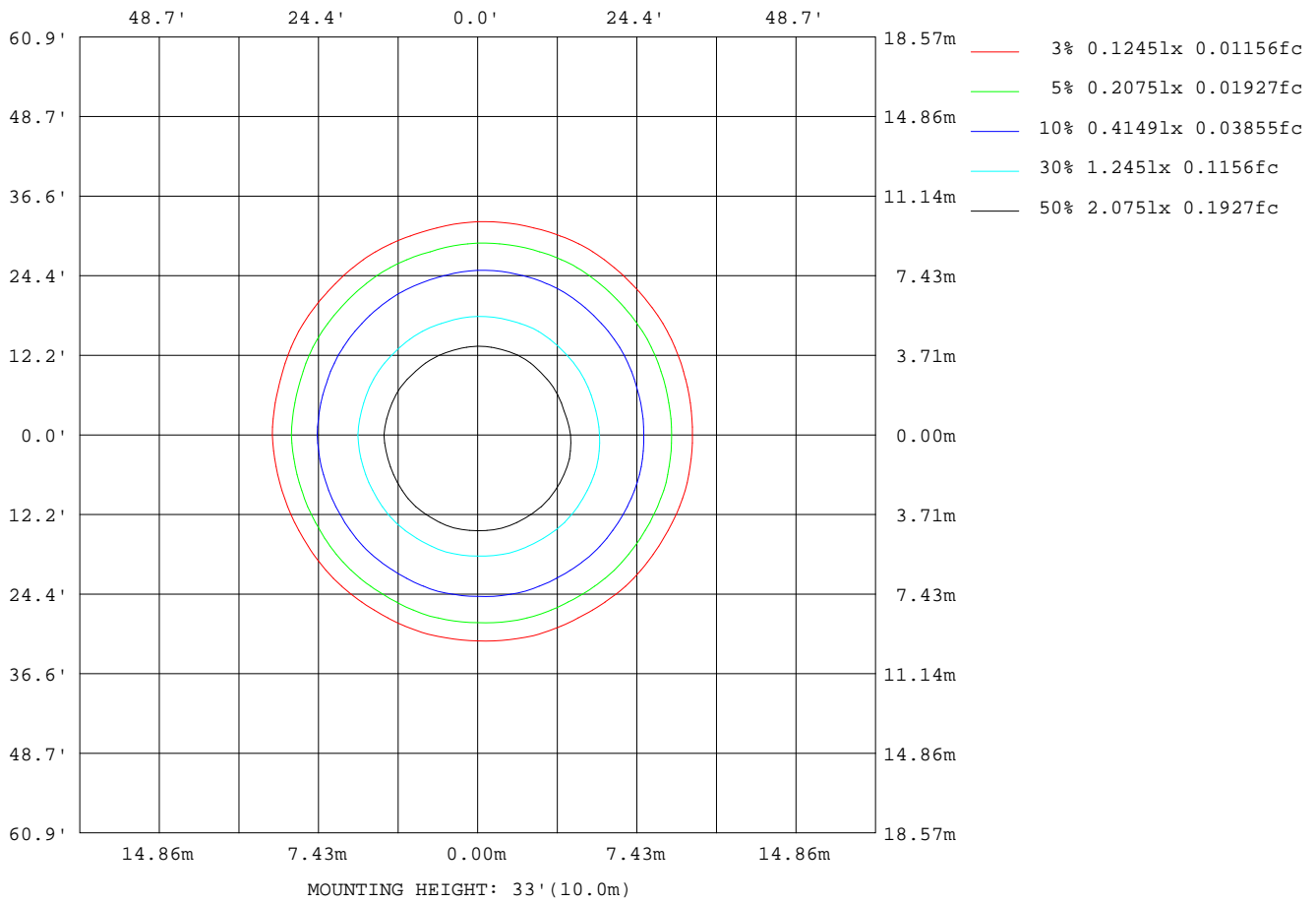
Note:The Curves indicate the illuminated area and the average illumination when the luminaire is at different distance.

C Range: 0 - 360DEG
C Interval: 15.0DEG
Test Speed: HIGH
Temperature:25.3DEG
Operators:Myles
Test Date:2018-12-20

γ Range: 0 - 90DEG
γ Interval: 1.0DEG
Test System:EVERFINE GO-2000B_V1 SYSTEM V2.0.362
Humidity:56%
Test Distance:5.850m [K=1.0000]
Remarks:

ISOLUX DIAGRAM

Test:U:221.1V I:0.0311A P:5.450W PF:0.7900 Freq:49.90Hz Lamp Flux:341.917x1 lm		
NAME: FL300-SL300-1S-4W-830-55D	TYPE:Linear Light	SERIAL No.:
SPEC.:3000K	DIM.: φ54mm*H72mm	
MFR.: NEKO LIGHTING AG		



C Range: 0 - 360DEG
C Interval: 15.0DEG
Test Speed: HIGH
Temperature:25.3DEG
Operators:Myles
Test Date:2018-12-20

γ Range: 0 - 90DEG
γ Interval: 1.0DEG
Test System:EVERFINE GO-2000B_V1 SYSTEM V2.0.362
Humidity:56%
Test Distance:5.850m [K=1.0000]
Remarks:

LED Avg.L Report

Test:U:221.1V I:0.0311A P:5.450W PF:0.7900 Freq:49.90Hz Lamp Flux:341.917x1 lm		
NAME: FL300-SL300-1S-4W-830-55D	TYPE:Linear Light	SERIAL No.:
SPEC.:3000K	DIM.: φ54mm*H72mm	
MFR.: NEKO LIGHTING AG		

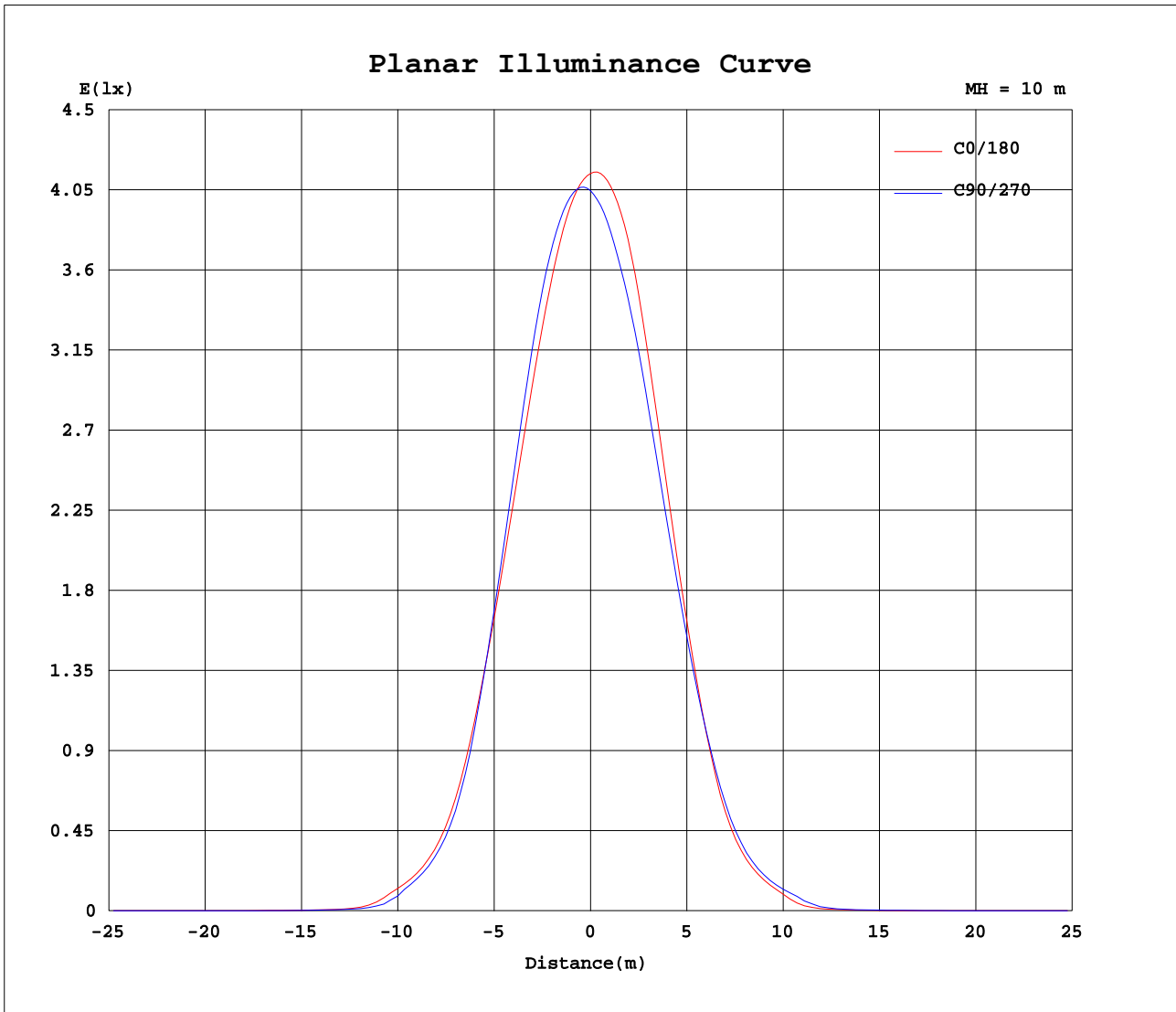
AvgL	cd/m2
L_0~180 (65) av	151
L_0~180 (75) av	54
L_0~180 (85) av	125
L_90~270 (65) av	267
L_90~270 (75) av	54
L_90~270 (85) av	89
L_45 (65) av	217
L_45 (75) av	75
L_45 (85) av	133

Standard: GB/T 29293-2012

C Range: 0 - 360DEG
C Interval: 15.0DEG
Test Speed: HIGH
Temperature:25.3DEG
Operators:Myles
Test Date:2018-12-20

γ Range: 0 - 90DEG
γ Interval: 1.0DEG
Test System:EVERFINE GO-2000B_V1 SYSTEM V2.0.362
Humidity:56%
Test Distance:5.850m [K=1.0000]
Remarks:

Planar Illuminance Curve



C Range: 0 - 360DEG
 C Interval: 15.0DEG
 Test Speed: HIGH
 Temperature: 25.3DEG
 Operators: Myles
 Test Date: 2018-12-20

γ Range: 0 - 90DEG
 γ Interval: 1.0DEG
 Test System: EVERFINE GO-2000B_V1 SYSTEM V2.0.362
 Humidity: 56%
 Test Distance: 5.850m [K=1.0000]
 Remarks:

LUMINOUS DISTRIBUTION INTENSITY DATA

Test:U:221.1V I:0.0311A P:5.450W PF:0.7900 Freq:49.90Hz Lamp Flux:341.917x1 lm		
NAME: FL300-SL300-1S-4W-830-55D	TYPE:Linear Light	SERIAL No.:
SPEC.:3000K	DIM.: φ54mm*H72mm	
MFR.: NEKO LIGHTING AG		

Table--1

UNIT: cd

C (DEG) \ γ (DEG)	0	15	30	45	60	75	90	105	120	135	150	165	180	195	210	225	240	255	270
0	414	412	410	408	407	405	404	403	402	401	400	399	414	412	410	408	407	405	404
5	405	406	406	407	408	408	408	408	408	407	405	403	415	410	405	400	397	393	391
10	385	389	392	395	397	399	400	401	401	400	397	394	403	395	388	380	374	370	369
15	352	360	364	369	370	374	375	377	375	373	367	364	371	362	355	344	339	335	337
20	306	314	318	322	323	327	327	328	324	322	315	313	318	308	303	293	291	288	290
25	250	257	258	262	260	262	259	260	255	254	247	246	250	242	238	232	232	230	234
30	184	190	188	190	186	185	180	180	174	174	170	170	175	169	169	166	168	168	173
35	115	117	115	114	109	108	102	103	99.0	99.2	96.3	97.4	101	98.6	100	100	103	104	110
40	65.4	65.6	63.9	62.9	60.8	59.4	56.2	56.0	53.2	53.4	51.7	52.2	54.2	53.2	54.9	55.3	57.4	58.1	62.0
45	35.7	35.9	33.7	32.6	29.1	28.4	23.7	24.5	22.5	22.6	21.5	24.0	26.3	26.1	28.3	29.4	31.3	31.8	34.2
50	7.96	7.94	6.44	6.33	5.58	5.50	4.87	4.95	4.49	4.30	4.00	4.36	4.93	4.89	5.50	6.23	7.25	7.72	8.73
55	2.73	2.63	2.44	2.33	2.19	2.18	2.11	2.12	1.94	1.87	1.76	1.87	2.06	2.08	2.21	2.28	2.44	2.54	2.76
60	0.95	0.93	0.79	0.73	0.63	0.65	0.62	0.63	0.51	0.50	0.45	0.49	0.56	0.58	0.67	0.68	0.78	0.84	1.01
65	0.07	0.05	0.06	0.04	0.06	0.05	0.07	0.07	0.05	0.02	0.04	0.01	0.02	0.04	0.03	0.06	0.05	0.08	0.08
70	0.02	0.00	0.02	0.00	0.02	0.01	0.04	0.04	0.03	0.00	0.02	0.01	0.00	0.02	0.01	0.03	0.01	0.03	0.02
75	0.02	0.00	0.02	0.00	0.02	0.01	0.02	0.01	0.02	0.00	0.02	0.01	0.00	0.02	0.00	0.02	0.00	0.02	0.00
80	0.01	0.00	0.01	0.00	0.01	0.01	0.01	0.01	0.01	0.00	0.01	0.01	0.00	0.01	0.00	0.02	0.00	0.02	0.00
85	0.01	0.00	0.01	0.00	0.01	0.01	0.01	0.01	0.01	0.00	0.01	0.01	0.00	0.01	0.00	0.01	0.00	0.01	0.00
90	0.00	0.00	0.01	0.00	0.01	0.01	0.01	0.01	0.01	0.00	0.01	0.01	0.00	0.00	0.00	0.00	0.00	0.00	0.00

C Range: 0 - 360DEG
 C Interval: 15.0DEG
 Test Speed: HIGH
 Temperature:25.3DEG
 Operators:Myles
 Test Date:2018-12-20

γ Range: 0 - 90DEG
 γ Interval: 1.0DEG
 Test System:EVERFINE GO-2000B_V1 SYSTEM V2.0.362
 Humidity:56%
 Test Distance:5.850m [K=1.0000]
 Remarks:

LUMINOUS DISTRIBUTION INTENSITY DATA

Test:U:221.1V I:0.0311A P:5.450W PF:0.7900 Freq:49.90Hz Lamp Flux:341.917x1 lm		
NAME: FL300-SL300-1S-4W-830-55D	TYPE:Linear Light	SERIAL No.:
SPEC.:3000K	DIM.: φ54mm*H72mm	
MFR.: NEKO LIGHTING AG		

Table--2

UNIT: cd

C (DEG) \ γ (DEG)	285	300	315	330	345													
0	403	402	401	400	399													
5	389	389	388	389	389													
10	367	367	365	366	367													
15	335	336	332	333	335													
20	289	292	289	291	291													
25	234	238	236	239	239													
30	174	179	177	179	179													
35	112	115	115	116	114													
40	64.0	66.2	65.7	66.3	65.1													
45	35.3	36.9	36.3	36.8	36.0													
50	9.66	11.0	9.91	9.85	8.89													
55	2.90	3.08	2.83	2.74	2.71													
60	1.08	1.26	1.16	1.15	1.06													
65	0.14	0.17	0.14	0.10	0.09													
70	0.07	0.09	0.06	0.02	0.02													
75	0.02	0.00	0.03	0.00	0.02													
80	0.01	0.00	0.02	0.00	0.02													
85	0.01	0.00	0.01	0.00	0.01													
90	0.00	0.00	0.00	0.00	0.00													

C Range: 0 - 360DEG
C Interval: 15.0DEG
Test Speed: HIGH
Temperature:25.3DEG
Operators:Myles
Test Date:2018-12-20

γ Range: 0 - 90DEG
γ Interval: 1.0DEG
Test System:EVERFINE GO-2000B_V1 SYSTEM V2.0.362
Humidity:56%
Test Distance:5.850m [K=1.0000]
Remarks: