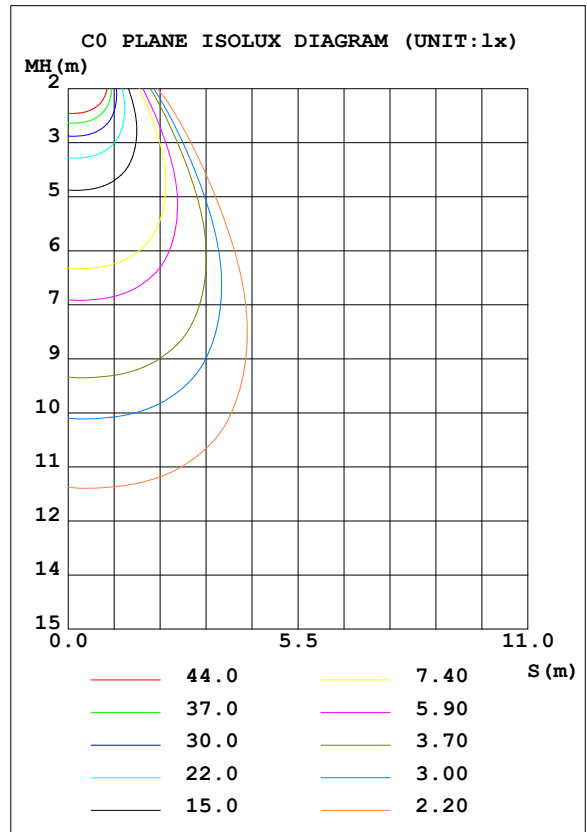
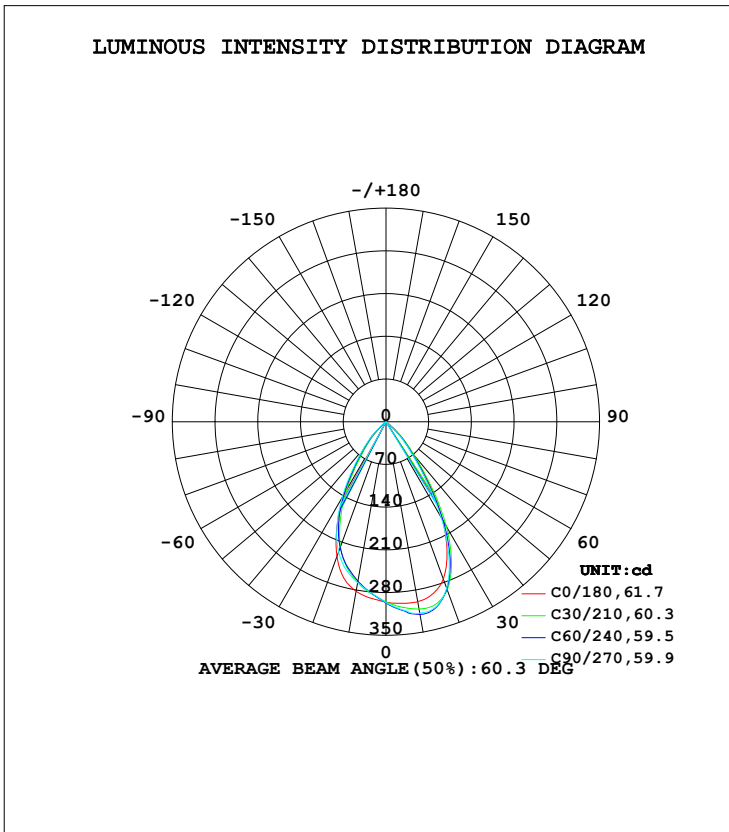


LUMINAIRE PHOTOMETRIC TEST REPORT

Test:U:220.4V I:0.0310A P:6.832W PF:0.7900 Freq:49.90Hz Lamp Flux:291.929x1 lm		
NAME: FL300-SL300-1S-4W-940-55D	TYPE:Spotlight	SERIAL No.:
SPEC.:4000K	DIM.: φ31mm*H50mm	
MFR.: NEKO LIGHTING AG		

DATA OF LAMP		PHOTOMETRIC DATA Eff: 42.73 lm/W			
MODEL	CREE-4000K	I _{max} (cd)	321.3	S/MH (C0/180)	0.87
NOMINAL POWER (W)	6	LOR (%)	100.0	S/MH (C90/270)	0.89
RATED VOLTAGE (V)	220	TOTAL FLUX (lm)	291.93	η UP, DN (C0-180)	0.0, 54.2
NOMINAL FLUX (lm)	291.929	CIE CLASS	DIRECT	η UP, DN (C180-360)	0.0, 45.8
LAMPS INSIDE	1	η up (%)	0.0	CIBSE SHR NOM	0.75
TEST VOLTAGE (V)	220	η down (%)	100.0	CIBSE SHR MAX	0.95



C Range: 0 - 360DEG
 C Interval: 15.0DEG
 Test Speed: HIGH
 Temperature: 25.3DEG
 Operators: Jason
 Test Date: 2022-01-20

γ Range: 0 - 90DEG
 γ Interval: 0.5DEG
 Test System: EVERFINE GO-2000B_V1 SYSTEM V2.0.362
 Humidity: 58%
 Test Distance: 8.967m [K=1.0000]
 Remarks:

ZONAL FLUX DIAGRAM

ZONAL FLUX DIAGRAM:

γ	C0	C45	C90	C135	C180	C225	C270	C315	γ	Φ zone	Φ total	%lum,lamp
10	299.3	317.2	318.6	300.8	282.1	264.9	267.8	275.7	0- 10	28.02	28.02	9.6,9.6
20	274.5	293.7	290.4	264.3	235.0	216.5	227.2	236.2	10- 20	77.92	105.9	36.3,36.3
30	185.2	198.5	180.8	165.1	137.4	129.5	143.9	152.7	20- 30	96.91	202.9	69.5,69.5
40	69.83	71.58	61.04	57.76	48.89	48.27	56.32	58.09	30- 40	64.81	267.7	91.7,91.7
50	8.328	7.925	4.794	4.558	2.846	3.196	4.398	4.872	40- 50	22.43	290.1	99.4,99.4
60	0.7651	0.7406	0.5557	0.4638	0.2444	0.3667	0.5367	0.5658	50- 60	1.650	291.7	99.9,99.9
70	0.0943	0.0314	0.0576	0	0	0.0523	0.0156	0.0785	60- 70	0.1589	291.9	100,100
80	0.0312	0	0.0106	0	0	0.0105	0	0.0262	70- 80	0.0212	291.9	100,100
90	0	0	0	0	0	0	0	0	80- 90	0.0029	291.9	100,100
100									90-100			
110									100-110			
120									110-120			
130									120-130			
140									130-140			
150									140-150			
160									150-160			
170									160-170			
180									170-180			
DEG	LUMINOUS INTENSITY:cd									UNIT:lm		

Conical surface Flux(90deg): 283.94 lm

%lum = 97.3%

%lamp = 97.3%

Conical surface Flux(120deg): 291.75 lm

%lum = 99.9%

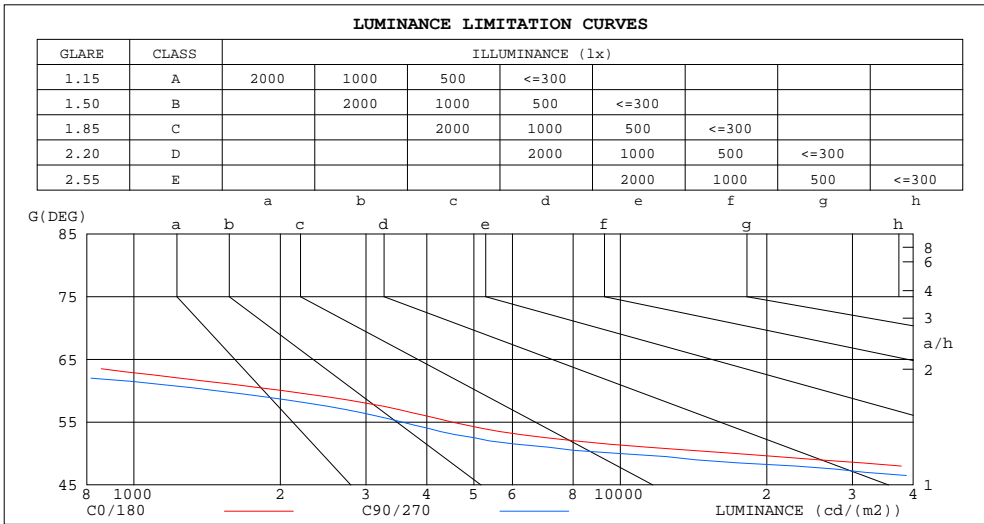
%lamp = 99.9%

C Range: 0 - 360DEG
C Interval: 15.0DEG
Test Speed: HIGH
Temperature:25.3DEG
Operators:Jason
Test Date:2022-01-20

γ Range: 0 - 90DEG
 γ Interval: 0.5DEG
Test System:EVERFINE GO-2000B_V1 SYSTEM V2.0.362
Humidity:58%
Test Distance:8.967m [K=1.0000]
Remarks:

LUMINANCE LIMITATION CURVES

Test:U:220.4V I:0.0310A P:6.832W PF:0.7900 Freq:49.90Hz Lamp Flux:291.929x1 lm		
NAME: FL300-SL300-1S-4W-940-55D	TYPE:Spotlight	SERIAL No.:
SPEC.:4000K	DIM.: φ31mm*H50mm	
MFR.: NEKO LIGHTING AG		



LUMINANCE cd/(m2)		
G(DEG)	C0/180	C90/270
85	159	0
80	239	81
75	242	161
70	365	223
65	575	394
60	2028	1473
55	4502	3557
50	17173	9886
45	72146	58616

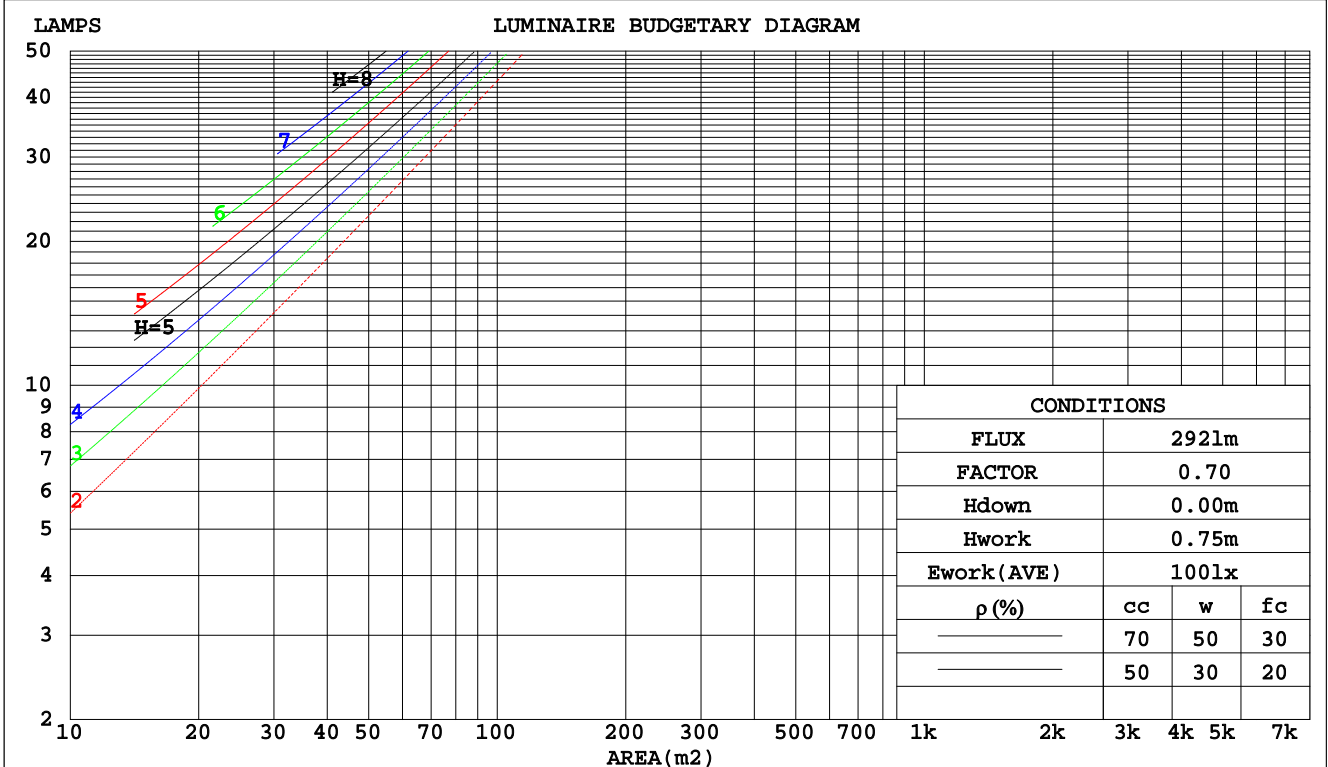
C Range: 0 - 360DEG
 C Interval: 15.0DEG
 Test Speed: HIGH
 Temperature:25.3DEG
 Operators:Jason
 Test Date:2022-01-20

γ Range: 0 - 90DEG
 γ Interval: 0.5DEG
 Test System:EVERFINE GO-2000B_V1 SYSTEM V2.0.362
 Humidity:58%
 Test Distance:8.967m [K=1.0000]
 Remarks:

CU AND LUMINAIRE BUDGETARY ESTIMATE DIAGRAM

Test:U:220.4V I:0.0310A P:6.832W PF:0.7900 Freq:49.90Hz Lamp Flux:291.929x1 lm		
NAME: FL300-SL300-1S-4W-940-55D	TYPE:Spotlight	SERIAL No.:
SPEC.:4000K	DIM.: φ31mm*H50mm	
MFR.: NEKO LIGHTING AG		

pcc	80%			70%			50%			30%			10%			0
	50%	30%	10%	50%	30%	10%	50%	30%	10%	50%	30%	10%	50%	30%	10%	0
ρw																
ρfc																
RCR	RCR:Room Cavity Ratio															
	Coefficients of Utilization(CU)															
0.0	1.19	1.19	1.19	1.16	1.16	1.16	1.11	1.11	1.11	1.06	1.06	1.06	1.02	1.02	1.02	1.00
1.0	1.11	1.08	1.06	1.09	1.06	1.04	1.05	1.03	1.01	1.01	.99	.98	.97	.96	.95	.93
2.0	1.03	.99	.96	1.01	.98	.94	.98	.95	.92	.95	.93	.90	.92	.90	.89	.87
3.0	.96	.91	.87	.94	.90	.86	.92	.88	.85	.89	.86	.83	.87	.85	.82	.81
4.0	.89	.84	.80	.88	.83	.79	.86	.82	.78	.84	.80	.77	.82	.79	.76	.75
5.0	.84	.78	.73	.83	.77	.73	.81	.76	.72	.79	.75	.72	.78	.74	.71	.70
6.0	.78	.72	.68	.78	.72	.68	.76	.71	.67	.75	.70	.67	.73	.69	.66	.65
7.0	.73	.67	.63	.73	.67	.63	.72	.66	.63	.70	.66	.62	.69	.65	.62	.61
8.0	.69	.63	.59	.69	.63	.59	.67	.62	.58	.66	.62	.58	.65	.61	.58	.57
9.0	.65	.59	.55	.65	.59	.55	.64	.58	.55	.63	.58	.55	.62	.58	.54	.53
10.0	.61	.56	.52	.61	.55	.52	.60	.55	.51	.59	.55	.51	.59	.54	.51	.50



C Range: 0 - 360DEG
 C Interval: 15.0DEG
 Test Speed: HIGH
 Temperature: 25.3DEG
 Operators: Jason
 Test Date: 2022-01-20

γ Range: 0 - 90DEG
 γ Interval: 0.5DEG
 Test System: EVERFINE GO-2000B_V1 SYSTEM V2.0.362
 Humidity: 58%
 Test Distance: 8.967m [K=1.0000]
 Remarks:

WEC AND CCEC

Test:U:220.4V I:0.0310A P:6.832W PF:0.7900 Freq:49.90Hz Lamp Flux:291.929x1 lm		
NAME: FL300-SL300-1S-4W-940-55D	TYPE:Spotlight	SERIAL No.:
SPEC.:4000K	DIM.: φ31mm*H50mm	
MFR.: NEKO LIGHTING AG		

ρcc	80%			70%			50%			30%			10%			0
ρw	50%	30%	10%	50%	30%	10%	50%	30%	10%	50%	30%	10%	50%	30%	10%	0
ρfc	20%			20%			20%			20%			20%			0
RCR	RCR:Room Cavity Ratio						Wall Exitance Coefficients(WEC)									
0.0																
1.0	.178	.102	.032	.172	.098	.031	.159	.091	.029	.148	.085	.027	.137	.079	.026	
2.0	.172	.094	.029	.166	.091	.028	.155	.086	.027	.146	.082	.026	.137	.077	.024	
3.0	.164	.087	.026	.159	.085	.026	.150	.081	.025	.142	.078	.024	.134	.074	.023	
4.0	.157	.081	.024	.153	.080	.024	.145	.077	.023	.137	.074	.022	.131	.071	.022	
5.0	.150	.076	.022	.146	.075	.022	.139	.073	.021	.133	.070	.021	.127	.068	.020	
6.0	.143	.072	.021	.140	.071	.020	.134	.069	.020	.128	.067	.020	.123	.065	.019	
7.0	.137	.068	.019	.134	.067	.019	.129	.065	.019	.124	.064	.018	.119	.062	.018	
8.0	.131	.064	.018	.129	.063	.018	.124	.062	.018	.120	.061	.017	.115	.059	.017	
9.0	.126	.061	.017	.124	.060	.017	.120	.059	.017	.115	.058	.017	.112	.057	.016	
10.0	.121	.058	.016	.119	.057	.016	.115	.056	.016	.111	.055	.016	.108	.054	.016	

ρcc	80%			70%			50%			30%			10%			0
ρw	50%	30%	10%	50%	30%	10%	50%	30%	10%	50%	30%	10%	50%	30%	10%	0
ρfc	20%			20%			20%			20%			20%			0
RCR	RCR:Room Cavity Ratio						Ceiling Cavity Exitance Coefficients(CCEC)									
0.0	.190	.190	.190	.163	.163	.163	.111	.111	.111	.064	.064	.064	.020	.020	.020	
1.0	.171	.157	.145	.147	.135	.125	.100	.093	.086	.058	.054	.050	.018	.017	.016	
2.0	.156	.132	.113	.134	.114	.097	.092	.079	.068	.053	.046	.040	.017	.015	.013	
3.0	.144	.114	.089	.124	.098	.077	.085	.068	.054	.049	.040	.032	.016	.013	.010	
4.0	.134	.099	.072	.115	.085	.063	.079	.060	.044	.046	.035	.026	.015	.011	.009	
5.0	.126	.087	.059	.108	.076	.051	.074	.053	.036	.043	.031	.022	.014	.010	.007	
6.0	.118	.078	.049	.102	.068	.043	.070	.047	.030	.041	.028	.018	.013	.009	.006	
7.0	.112	.071	.042	.096	.061	.036	.067	.043	.026	.039	.025	.015	.013	.008	.005	
8.0	.107	.065	.036	.092	.056	.031	.063	.039	.022	.037	.023	.013	.012	.008	.004	
9.0	.102	.059	.031	.088	.052	.027	.061	.036	.019	.035	.021	.011	.011	.007	.004	
10.0	.097	.055	.027	.084	.048	.024	.058	.034	.017	.034	.020	.010	.011	.007	.003	

C Range: 0 - 360DEG
 C Interval: 15.0DEG
 Test Speed: HIGH
 Temperature:25.3DEG
 Operators:Jason
 Test Date:2022-01-20

γ Range: 0 - 90DEG
 γ Interval: 0.5DEG
 Test System:EVERFINE GO-2000B_V1 SYSTEM V2.0.362
 Humidity:58%
 Test Distance:8.967m [K=1.0000]
 Remarks:

UGR(Unified Glare Rating) Table

Test:U:220.4V I:0.0310A P:6.832W PF:0.7900 Freq:49.90Hz Lamp Flux:291.929x1 lm		
NAME: FL300-SL300-1S-4W-940-55D	TYPE:Spotlight	SERIAL No.:
SPEC.:4000K	DIM.: φ31mm*H50mm	
MFR.: NEKO LIGHTING AG		

ceiling/cavity	0.7	0.7	0.5	0.5	0.3	0.7	0.7	0.5	0.5	0.3
walls	0.5	0.3	0.5	0.3	0.3	0.5	0.3	0.5	0.3	0.3
working plane	0.2	0.2	0.2	0.2	0.2	0.2	0.2	0.2	0.2	0.2
Room dimensions	Viewed crosswise					Viewed endwise				
x = 2H y = 2H	27.8	28.8	28.1	29.0	29.1	27.0	28.0	27.3	28.2	28.4
3H	27.7	28.5	27.9	28.7	28.9	26.9	27.8	27.1	28.0	28.2
4H	27.6	28.4	27.8	28.6	28.8	26.8	27.6	27.1	27.8	28.1
6H	27.5	28.3	27.8	28.5	28.7	26.7	27.5	27.0	27.7	28.0
8H	27.4	28.2	27.7	28.4	28.7	26.7	27.4	27.0	27.7	27.9
12H	27.4	28.1	27.7	28.4	28.6	26.6	27.3	26.9	27.6	27.9
4H 2H	27.6	28.4	27.8	28.6	28.8	26.8	27.6	27.1	27.8	28.1
3H	27.4	28.1	27.7	28.4	28.7	26.6	27.3	26.9	27.6	27.9
4H	27.3	27.9	27.6	28.2	28.5	26.5	27.2	26.9	27.5	27.8
6H	27.2	27.8	27.6	28.1	28.4	26.4	27.0	26.8	27.3	27.7
8H	27.1	27.7	27.5	28.0	28.4	26.4	26.9	26.8	27.2	27.6
12H	27.1	27.6	27.5	27.9	28.3	26.3	26.8	26.7	27.2	27.6
8H 4H	27.1	27.7	27.5	28.0	28.4	26.4	26.9	26.8	27.2	27.6
6H	27.0	27.5	27.5	27.9	28.3	26.3	26.7	26.7	27.1	27.5
8H	27.0	27.4	27.4	27.8	28.2	26.2	26.6	26.7	27.0	27.5
12H	26.9	27.3	27.4	27.7	28.2	26.2	26.5	26.6	26.9	27.4
12H 4H	27.1	27.6	27.5	27.9	28.3	26.3	26.8	26.7	27.2	27.6
6H	27.0	27.4	27.4	27.8	28.2	26.2	26.6	26.7	27.0	27.5
8H	26.9	27.3	27.4	27.7	28.2	26.2	26.5	26.6	26.9	27.4
Variations with the observer position at spacings:										
S = 1.0H	+ 2.7 / -19.6					+ 2.6 / -20.4				
1.5H	+ 4.5 / -16.4					+ 4.7 / -16.4				
2.0H	+ 7.6 / -20.7					+ 8.0 / -22.7				

CIE Pub.117, 291.9 lm Total Lamp Luminous Flux Correct (8log(F/F0) = -4.3)

C Range: 0 - 360DEG
 C Interval: 15.0DEG
 Test Speed: HIGH
 Temperature:25.3DEG
 Operators:Jason
 Test Date:2022-01-20

γ Range: 0 - 90DEG
 γ Interval: 0.5DEG
 Test System:EVERFINE GO-2000B_V1 SYSTEM V2.0.362
 Humidity:58%
 Test Distance:8.967m [K=1.0000]
 Remarks:

UTILIZATION FACTORS TABLE

Test:U:220.4V I:0.0310A P:6.832W PF:0.7900 Freq:49.90Hz Lamp Flux:291.929x1 lm		
NAME: FL300-SL300-1S-4W-940-55D	TYPE:Spotlight	SERIAL No.:
SPEC.:4000K	DIM.: φ31mm*H50mm	
MFR.: NEKO LIGHTING AG		

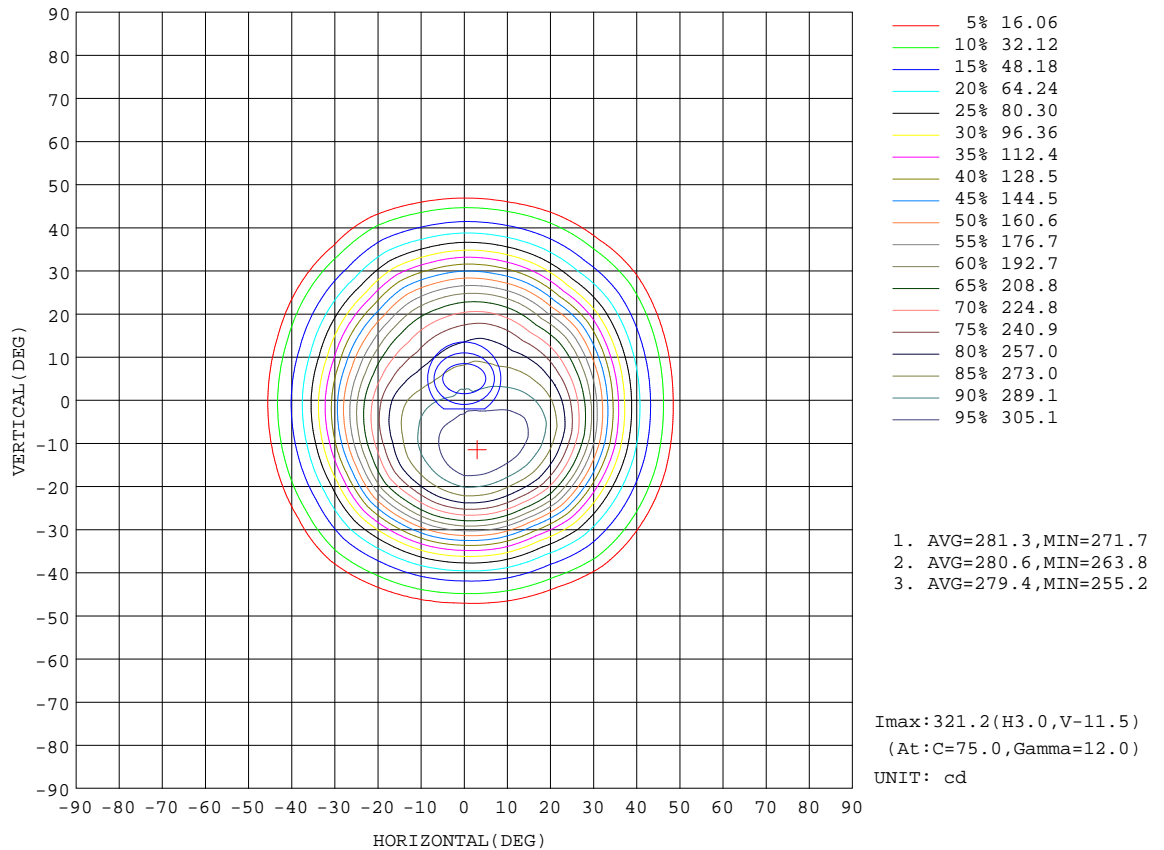
REFLECTANCE										
Ceiling	0.8	0.8	0.8	0.7	0.7	0.7	0.5	0.5	0.5	0
Walls	0.7	0.5	0.3	0.7	0.5	0.3	0.7	0.5	0.3	0
Working plane	0.2	0.2	0.2	0.2	0.2	0.2	0.2	0.2	0.2	0
ROOM INDEX	UTILIZATION FACTORS(PERCENT) $k(RI) \times RCR = 5$									
k = 0.60	86	80	76	86	80	76	85	79	76	72
0.80	94	88	84	93	88	84	92	87	84	80
1.00	99	93	89	98	93	89	96	93	89	85
1.25	103	98	94	102	97	94	100	96	93	89
1.50	106	101	98	105	100	97	102	99	96	92
2.00	109	104	101	107	103	100	104	101	99	94
2.50	110	106	103	109	105	102	105	103	101	95
3.00	112	108	106	110	107	105	107	104	102	96
4.00	114	111	109	112	109	107	108	106	105	98
5.00	115	113	111	113	111	109	109	107	106	99
ROOM INDEX	UF(total)									Direct
According to DIN EN 13032-2 2004			Suspended				SHRNOM = 1.25			

C Range: 0 - 360DEG
C Interval: 15.0DEG
Test Speed: HIGH
Temperature:25.3DEG
Operators:Jason
Test Date:2022-01-20

γ Range: 0 - 90DEG
γ Interval: 0.5DEG
Test System:EVERFINE GO-2000B_V1 SYSTEM V2.0.362
Humidity:58%
Test Distance:8.967m [K=1.0000]
Remarks:

ISOCANDELA DIAGRAM

Test:U:220.4V I:0.0310A P:6.832W PF:0.7900 Freq:49.90Hz Lamp Flux:291.929x1 lm		
NAME: FL300-SL300-1S-4W-940-55D	TYPE:Spotlight	SERIAL No.:
SPEC.:4000K	DIM.: φ31mm*H50mm	
MFR.: NEKO LIGHTING AG		



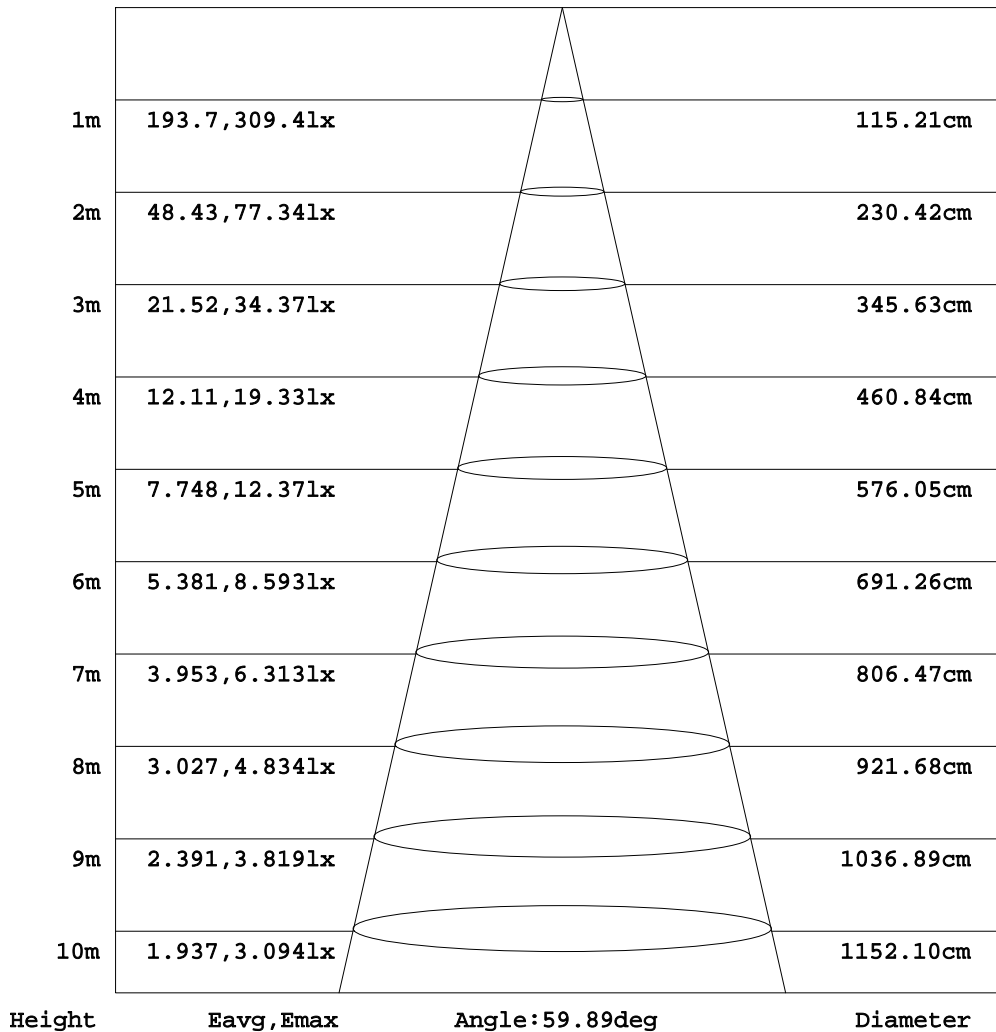
C Range: 0 - 360DEG
C Interval: 15.0DEG
Test Speed: HIGH
Temperature:25.3DEG
Operators:Jason
Test Date:2022-01-20

γ Range: 0 - 90DEG
γ Interval: 0.5DEG
Test System:EVERFINE GO-2000B_V1 SYSTEM V2.0.362
Humidity:58%
Test Distance:8.967m [K=1.0000]
Remarks:

AAI Figure

Test:U:220.4V I:0.0310A P:6.832W PF:0.7900 Freq:49.90Hz Lamp Flux:291.929x1 lm		
NAME: FL300-SL300-1S-4W-940-55D	TYPE:Spotlight	SERIAL No.:
SPEC.:4000K	DIM.: φ31mm*H50mm	
MFR.: NEKO LIGHTING AG		

Flux out:202.9 lm



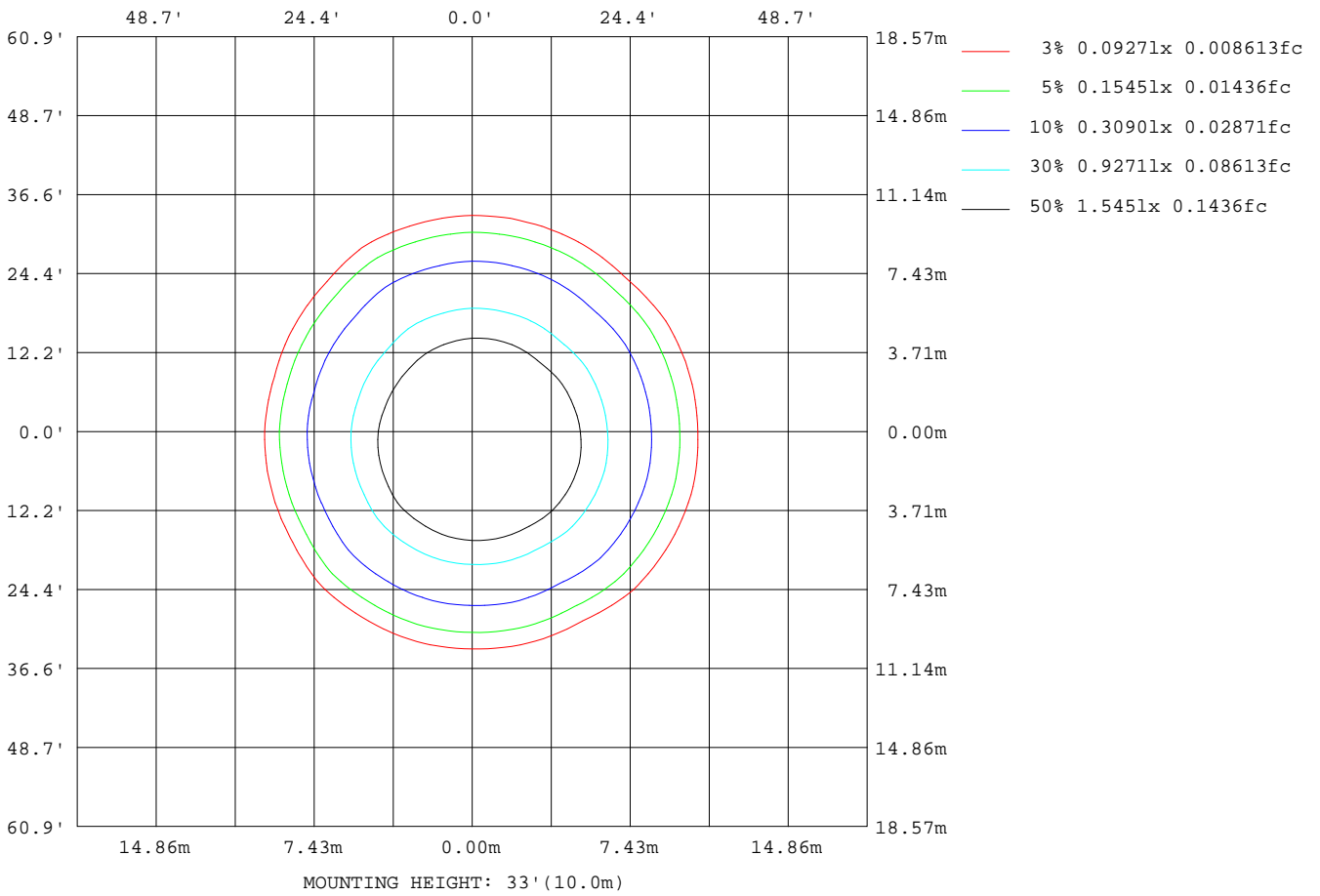
Note:The Curves indicate the illuminated area and the average illumination when the luminaire is at different distance.

C Range: 0 - 360DEG
C Interval: 15.0DEG
Test Speed: HIGH
Temperature:25.3DEG
Operators:Jason
Test Date:2022-01-20

γ Range: 0 - 90DEG
γ Interval: 0.5DEG
Test System:EVERFINE GO-2000B_V1 SYSTEM V2.0.362
Humidity:58%
Test Distance:8.967m [K=1.0000]
Remarks:

ISOLUX DIAGRAM

Test:U:220.4V I:0.0310A P:6.832W PF:0.7900 Freq:49.90Hz Lamp Flux:291.929x1 lm		
NAME: FL300-SL300-1S-4W-940-55D	TYPE:Spotlight	SERIAL No.:
SPEC.:4000K	DIM.: φ31mm*H50mm	
MFR.: NEKO LIGHTING AG		



C Range: 0 - 360DEG
 C Interval: 15.0DEG
 Test Speed: HIGH
 Temperature:25.3DEG
 Operators:Jason
 Test Date:2022-01-20

γ Range: 0 - 90DEG
 γ Interval: 0.5DEG
 Test System:EVERFINE GO-2000B_V1 SYSTEM V2.0.362
 Humidity:58%
 Test Distance:8.967m [K=1.0000]
 Remarks:

LED Avg.L Report

Test:U:220.4V I:0.0310A P:6.832W PF:0.7900 Freq:49.90Hz Lamp Flux:291.929x1 lm		
NAME: FL300-SL300-1S-4W-940-55D	TYPE:Spotlight	SERIAL No.:
SPEC.:4000K	DIM.: φ31mm*H50mm	
MFR.: NEKO LIGHTING AG		

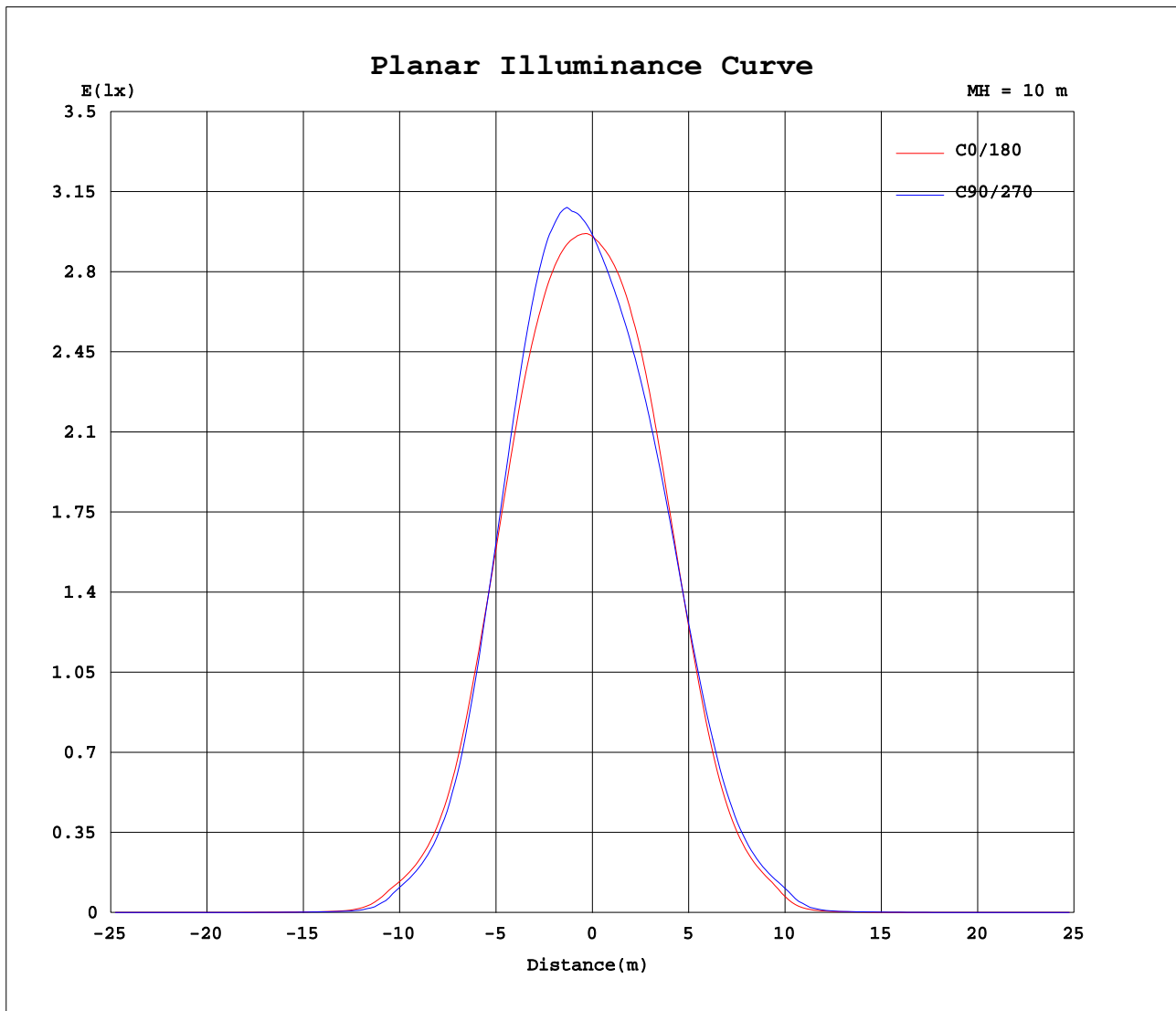
AvgL	cd/m2
L_0~180 (65) av	328
L_0~180 (75) av	121
L_0~180 (85) av	79
L_90~270 (65) av	311
L_90~270 (75) av	81
L_90~270 (85) av	0
L_45 (65) av	324
L_45 (75) av	87
L_45 (85) av	60

Standard: GB/T 29293-2012

C Range: 0 - 360DEG
C Interval: 15.0DEG
Test Speed: HIGH
Temperature:25.3DEG
Operators:Jason
Test Date:2022-01-20

γ Range: 0 - 90DEG
γ Interval: 0.5DEG
Test System:EVERFINE GO-2000B_V1 SYSTEM V2.0.362
Humidity:58%
Test Distance:8.967m [K=1.0000]
Remarks:

Planar Illuminance Curve



C Range: 0 - 360DEG
 C Interval: 15.0DEG
 Test Speed: HIGH
 Temperature: 25.3DEG
 Operators: Jason
 Test Date: 2022-01-20

γ Range: 0 - 90DEG
 γ Interval: 0.5DEG
 Test System: EVERFINE GO-2000B_V1 SYSTEM V2.0.362
 Humidity: 58%
 Test Distance: 8.967m [K=1.0000]
 Remarks:

LUMINOUS DISTRIBUTION INTENSITY DATA

Test:U:220.4V I:0.0310A P:6.832W PF:0.7900 Freq:49.90Hz Lamp Flux:291.929x1 lm		
NAME: FL300-SL300-1S-4W-940-55D	TYPE:Spotlight	SERIAL No.:
SPEC.:4000K	DIM.: φ31mm*H50mm	
MFR.: NEKO LIGHTING AG		

Table--1

UNIT: cd

C (DEG) \ γ (DEG)	0	15	30	45	60	75	90	105	120	135	150	165	180	195	210	225	240	255	270
0	295	295	295	296	297	298	296	297	295	294	295	295	295	295	295	296	297	298	296
5	299	302	305	309	310	312	309	309	305	300	297	293	290	286	283	282	282	282	282
10	299	306	311	317	320	320	319	315	308	301	294	288	282	274	268	265	265	267	268
15	293	304	310	315	315	317	314	306	297	289	280	273	266	255	247	244	245	248	252
20	274	288	293	294	291	292	290	282	273	264	252	244	235	224	218	217	220	223	227
25	237	250	254	255	249	248	244	238	228	223	208	199	190	181	177	178	184	186	190
30	185	196	198	198	187	186	181	176	170	165	150	143	137	130	129	130	139	140	144
35	121	129	129	128	115	115	110	108	104	102	91.4	87.4	84.8	80.3	81.2	82.1	90.8	91.4	94.5
40	69.8	73.2	72.7	71.6	63.2	63.2	61.0	60.3	58.0	57.8	51.6	49.6	48.9	46.8	47.2	48.3	54.3	54.4	56.3
45	38.5	40.1	39.3	38.4	33.1	32.7	31.3	30.9	29.7	29.8	23.5	21.6	19.9	17.4	18.4	20.9	28.7	28.7	30.0
50	8.33	9.57	8.63	7.93	5.51	5.35	4.79	4.74	4.42	4.56	3.32	3.12	2.85	2.68	2.90	3.20	4.27	4.21	4.40
55	1.95	2.04	2.01	1.95	1.71	1.63	1.54	1.49	1.52	1.51	1.30	1.21	1.15	1.13	1.17	1.30	1.55	1.58	1.54
60	0.77	0.79	0.81	0.74	0.60	0.56	0.56	0.51	0.51	0.46	0.38	0.30	0.24	0.26	0.27	0.37	0.46	0.52	0.54
65	0.18	0.15	0.18	0.11	0.14	0.08	0.13	0.08	0.11	0.07	0.09	0.04	0.03	0.07	0.04	0.09	0.07	0.12	0.07
70	0.09	0.06	0.10	0.03	0.07	0.01	0.06	0.01	0.06	0.00	0.04	0.00	0.00	0.04	0.00	0.05	0.01	0.05	0.02
75	0.05	0.00	0.05	0.00	0.04	0.00	0.03	0.00	0.03	0.00	0.02	0.00	0.00	0.02	0.00	0.02	0.00	0.03	0.00
80	0.03	0.00	0.03	0.00	0.01	0.00	0.01	0.00	0.01	0.00	0.01	0.00	0.00	0.01	0.00	0.01	0.00	0.02	0.00
85	0.01	0.00	0.01	0.00	0.00	0.00	0.00	0.00	0.00	0.00	0.00	0.00	0.00	0.00	0.00	0.01	0.00	0.01	0.00
90	0.00	0.00	0.00	0.00	0.00	0.00	0.00	0.00	0.00	0.00	0.00	0.00	0.00	0.00	0.00	0.00	0.00	0.00	0.00

C Range: 0 - 360DEG
 C Interval: 15.0DEG
 Test Speed: HIGH
 Temperature:25.3DEG
 Operators:Jason
 Test Date:2022-01-20

γ Range: 0 - 90DEG
 γ Interval: 0.5DEG
 Test System:EVERFINE GO-2000B_V1 SYSTEM V2.0.362
 Humidity:58%
 Test Distance:8.967m [K=1.0000]
 Remarks:

LUMINOUS DISTRIBUTION INTENSITY DATA

Test:U:220.4V I:0.0310A P:6.832W PF:0.7900 Freq:49.90Hz Lamp Flux:291.929x1 lm		
NAME: FL300-SL300-1S-4W-940-55D	TYPE:Spotlight	SERIAL No.:
SPEC.:4000K	DIM.: ϕ 31mm*H50mm	
MFR.: NEKO LIGHTING AG		

Table--2

UNIT: cd

C (DEG) \ γ (DEG)	285	300	315	330	345														
0	297	295	294	295	295														
5	284	284	286	290	294														
10	271	273	276	283	290														
15	256	258	260	269	280														
20	232	234	236	247	259														
25	194	198	200	213	223														
30	146	151	153	167	175														
35	96.1	98.1	98.7	110	115														
40	56.9	58.1	58.1	64.5	67.1														
45	30.3	31.5	31.3	36.1	37.2														
50	4.26	4.89	4.87	6.76	7.26														
55	1.57	1.61	1.66	1.82	1.88														
60	0.59	0.56	0.57	0.67	0.73														
65	0.13	0.09	0.14	0.10	0.16														
70	0.07	0.03	0.08	0.05	0.09														
75	0.04	0.00	0.05	0.00	0.05														
80	0.02	0.00	0.03	0.00	0.03														
85	0.01	0.00	0.01	0.00	0.02														
90	0.00	0.00	0.00	0.00	0.00														

C Range: 0 - 360DEG
 C Interval: 15.0DEG
 Test Speed: HIGH
 Temperature:25.3DEG
 Operators:Jason
 Test Date:2022-01-20

γ Range: 0 - 90DEG
 γ Interval: 0.5DEG
 Test System:EVERFINE GO-2000B_V1 SYSTEM V2.0.362
 Humidity:58%
 Test Distance:8.967m [K=1.0000]
 Remarks: