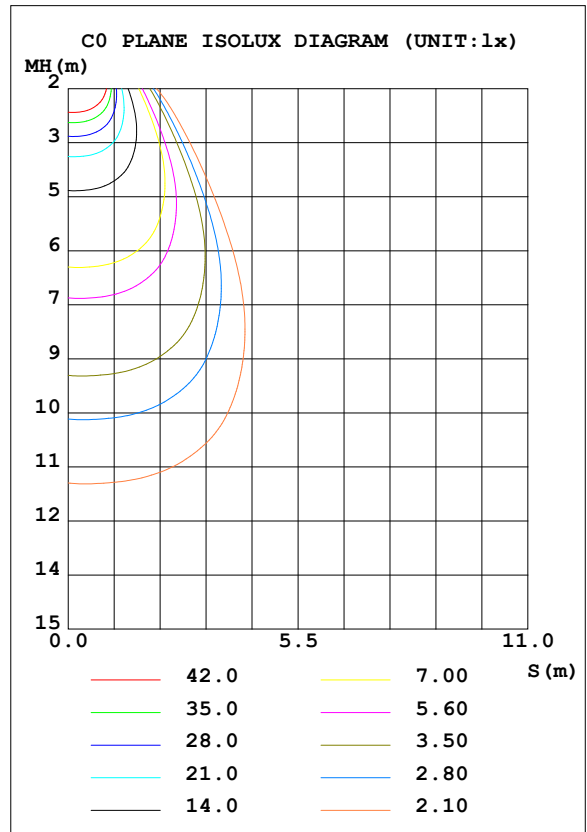
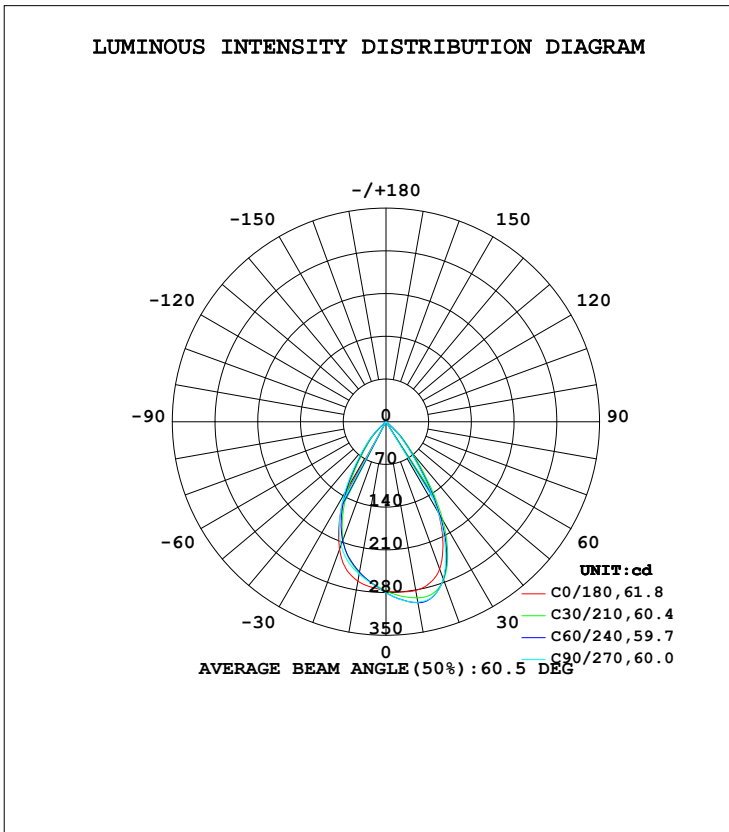


LUMINAIRE PHOTOMETRIC TEST REPORT

Test:U:220.4V I:0.0310A P:6.832W PF:0.7570 Freq:49.90Hz Lamp Flux:276.05lx1 lm		
NAME: FL300-SL300-1S-4W-930-55D	TYPE:Spotlight	SERIAL No.:
SPEC.:3000K	DIM.: φ31mm*H50mm	
MFR.: NEKO LIGHTING AG		

DATA OF LAMP		PHOTOMETRIC DATA Eff: 40.40 lm/W			
MODEL	CREE-3000K	I _{max} (cd)	302.4	S/MH (C0/180)	0.88
NOMINAL POWER (W)	6	LOR (%)	100.0	S/MH (C90/270)	0.89
RATED VOLTAGE (V)	220	TOTAL FLUX (lm)	276.05	η UP, DN (C0-180)	0.0,54.1
NOMINAL FLUX (lm)	276.051	CIE CLASS	DIRECT	η UP, DN (C180-360)	0.0,45.9
LAMPS INSIDE	1	η up (%)	0.0	CIBSE SHR NOM	0.75
TEST VOLTAGE (V)	220	η down (%)	100.0	CIBSE SHR MAX	0.95



C Range: 0 - 360DEG
 C Interval: 15.0DEG
 Test Speed: HIGH
 Temperature: 25.3DEG
 Operators: Jason
 Test Date: 2022-01-20

γ Range: 0 - 90DEG
 γ Interval: 0.5DEG
 Test System: EVERFINE GO-2000B_V1 SYSTEM V2.0.362
 Humidity: 58%
 Test Distance: 8.967m [K=1.0000]
 Remarks:

ZONAL FLUX DIAGRAM

ZONAL FLUX DIAGRAM:

γ	C0	C45	C90	C135	C180	C225	C270	C315	γ	Φ zone	Φ total	%lum,lamp
10	280.5	297.3	300.4	285.6	265.3	248.3	253.5	261.9	0- 10	26.45	26.45	9.58,9.58
20	257.0	277.7	274.1	250.8	222.6	203.0	215.2	224.8	10- 20	73.64	100.1	36.3,36.3
30	171.8	188.9	170.9	156.4	131.4	121.3	136.2	145.5	20- 30	91.69	191.8	69.5,69.5
40	64.15	68.60	57.99	54.68	47.04	44.95	53.26	55.34	30- 40	61.33	253.1	91.7,91.7
50	7.057	7.809	4.582	4.261	2.850	2.883	4.158	4.704	40- 50	21.21	274.3	99.4,99.4
60	0.6812	0.7196	0.5346	0.4273	0.2495	0.3301	0.5053	0.5447	50- 60	1.554	275.9	99.9,99.9
70	0.0838	0.0312	0.0575	0.0052	0	0.0470	0.0154	0.0733	60- 70	0.1478	276.0	100,100
80	0.0262	0	0.0208	0	0	0.0105	0	0.0158	70- 80	0.0207	276.0	100,100
90	0	0	0	0	0	0	0	0	80- 90	0.0027	276.1	100,100
100									90-100			
110									100-110			
120									110-120			
130									120-130			
140									130-140			
150									140-150			
160									150-160			
170									160-170			
180									170-180			
DEG	LUMINOUS INTENSITY:cd									UNIT:lm		

Conical surface Flux(90deg): 268.51 lm

%lum = 97.3%
%lamp = 97.3%

Conical surface Flux(120deg): 275.88 lm

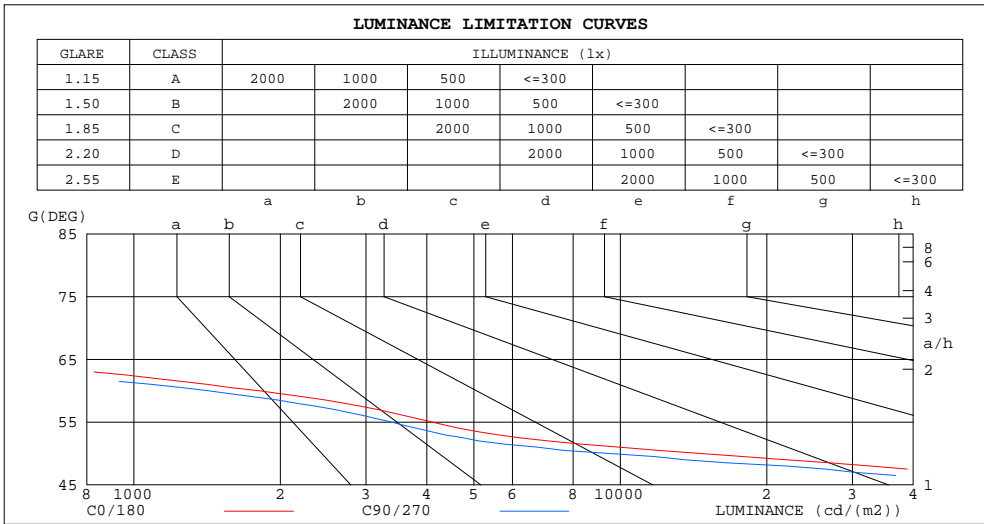
%lum = 99.9%
%lamp = 99.9%

C Range: 0 - 360DEG
C Interval: 15.0DEG
Test Speed: HIGH
Temperature:25.3DEG
Operators:Jason
Test Date:2022-01-20

γ Range: 0 - 90DEG
 γ Interval: 0.5DEG
Test System:EVERFINE GO-2000B_V1 SYSTEM V2.0.362
Humidity:58%
Test Distance:8.967m [K=1.0000]
Remarks:

LUMINANCE LIMITATION CURVES

Test:U:220.4V I:0.0310A P:6.832W PF:0.7570 Freq:49.90Hz Lamp Flux:276.05lx1 lm		
NAME: FL300-SL300-1S-4W-930-55D	TYPE:Spotlight	SERIAL No.:
SPEC.:3000K	DIM.: φ31mm*H50mm	
MFR.: NEKO LIGHTING AG		



LUMINANCE cd/(m2)		
G(DEG)	C0/180	C90/270
85	2	0
80	200	159
75	242	187
70	325	223
65	493	329
60	1806	1417
55	4102	3388
50	14554	9450
45	65874	55661

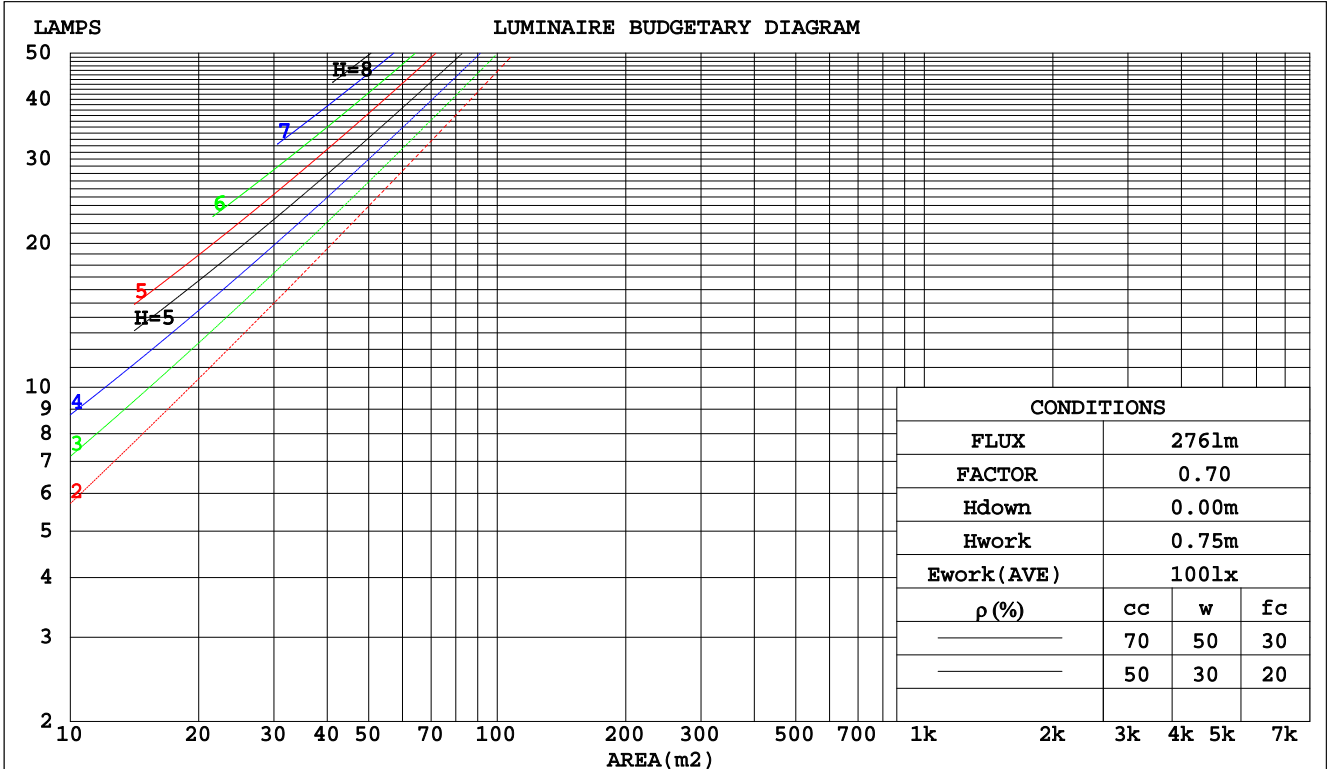
C Range: 0 - 360DEG
 C Interval: 15.0DEG
 Test Speed: HIGH
 Temperature:25.3DEG
 Operators:Jason
 Test Date:2022-01-20

γ Range: 0 - 90DEG
 γ Interval: 0.5DEG
 Test System:EVERFINE GO-2000B_V1 SYSTEM V2.0.362
 Humidity:58%
 Test Distance:8.967m [K=1.0000]
 Remarks:

CU AND LUMINAIRE BUDGETARY ESTIMATE DIAGRAM

Test:U:220.4V I:0.0310A P:6.832W PF:0.7570 Freq:49.90Hz Lamp Flux:276.05lx1 lm		
NAME: FL300-SL300-1S-4W-930-55D	TYPE:Spotlight	SERIAL No.:
SPEC.:3000K	DIM.: φ31mm*H50mm	
MFR.: NEKO LIGHTING AG		

pcc	80%			70%			50%			30%			10%			0
pw	50%	30%	10%	50%	30%	10%	50%	30%	10%	50%	30%	10%	50%	30%	10%	0
pfc	20%			20%			20%			20%			20%			0
RCR	RCR:Room Cavity Ratio															
	Coefficients of Utilization(CU)															
0.0	1.19	1.19	1.19	1.16	1.16	1.16	1.11	1.11	1.11	1.06	1.06	1.06	1.02	1.02	1.02	.00
1.0	1.11	1.08	1.06	1.09	1.06	1.04	1.05	1.03	1.01	1.01	.99	.98	.97	.96	.95	.93
2.0	1.03	.99	.96	1.01	.98	.94	.98	.95	.92	.95	.93	.90	.92	.90	.89	.87
3.0	.96	.91	.87	.94	.90	.86	.92	.88	.85	.89	.86	.83	.87	.84	.82	.81
4.0	.89	.84	.80	.88	.83	.79	.86	.82	.78	.84	.80	.77	.82	.79	.76	.75
5.0	.84	.78	.73	.83	.77	.73	.81	.76	.72	.79	.75	.72	.78	.74	.71	.70
6.0	.78	.72	.68	.78	.72	.68	.76	.71	.67	.75	.70	.67	.73	.69	.66	.65
7.0	.73	.67	.63	.73	.67	.63	.72	.66	.63	.70	.66	.62	.69	.65	.62	.61
8.0	.69	.63	.59	.68	.63	.59	.67	.62	.58	.66	.62	.58	.65	.61	.58	.57
9.0	.65	.59	.55	.65	.59	.55	.64	.58	.55	.63	.58	.55	.62	.58	.54	.53
10.0	.61	.56	.52	.61	.55	.52	.60	.55	.51	.59	.55	.51	.59	.54	.51	.50



C Range: 0 - 360DEG
 C Interval: 15.0DEG
 Test Speed: HIGH
 Temperature:25.3DEG
 Operators:Jason
 Test Date:2022-01-20

γ Range: 0 - 90DEG
 γ Interval: 0.5DEG
 Test System:EVERFINE GO-2000B_V1 SYSTEM V2.0.362
 Humidity:58%
 Test Distance:8.967m [K=1.0000]
 Remarks:

WEC AND CCEC

Test:U:220.4V I:0.0310A P:6.832W PF:0.7570 Freq:49.90Hz Lamp Flux:276.051x1 lm		
NAME: FL300-SL300-1S-4W-930-55D	TYPE:Spotlight	SERIAL No.:
SPEC.:3000K	DIM.: φ31mm*H50mm	
MFR.: NEKO LIGHTING AG		

ρcc	80%			70%			50%			30%			10%			0
ρw	50%	30%	10%	50%	30%	10%	50%	30%	10%	50%	30%	10%	50%	30%	10%	0
ρfc	20%			20%			20%			20%			20%			0
RCR	RCR:Room Cavity Ratio						Wall Exitance Coefficients(WEC)									
0.0																
1.0	.179	.102	.032	.172	.098	.031	.159	.091	.029	.148	.085	.027	.137	.079	.026	
2.0	.172	.094	.029	.166	.091	.028	.155	.086	.027	.146	.082	.026	.137	.077	.024	
3.0	.164	.087	.026	.159	.085	.026	.150	.081	.025	.142	.078	.024	.134	.074	.023	
4.0	.157	.081	.024	.153	.080	.024	.145	.077	.023	.138	.074	.022	.131	.071	.022	
5.0	.150	.076	.022	.146	.075	.022	.139	.073	.021	.133	.070	.021	.127	.068	.020	
6.0	.143	.072	.021	.140	.071	.020	.134	.069	.020	.128	.067	.020	.123	.065	.019	
7.0	.137	.068	.019	.134	.067	.019	.129	.065	.019	.124	.064	.018	.119	.062	.018	
8.0	.131	.064	.018	.129	.063	.018	.124	.062	.018	.120	.061	.017	.115	.059	.017	
9.0	.126	.061	.017	.124	.060	.017	.120	.059	.017	.115	.058	.017	.112	.057	.016	
10.0	.121	.058	.016	.119	.058	.016	.115	.056	.016	.111	.055	.016	.108	.054	.016	

ρcc	80%			70%			50%			30%			10%			0
ρw	50%	30%	10%	50%	30%	10%	50%	30%	10%	50%	30%	10%	50%	30%	10%	0
ρfc	20%			20%			20%			20%			20%			0
RCR	RCR:Room Cavity Ratio						Ceiling Cavity Exitance Coefficients(CCEC)									
0.0	.190	.190	.190	.163	.163	.163	.111	.111	.111	.064	.064	.064	.020	.020	.020	
1.0	.171	.157	.145	.147	.135	.125	.100	.093	.086	.058	.054	.050	.018	.017	.016	
2.0	.156	.132	.113	.134	.114	.097	.092	.079	.068	.053	.046	.040	.017	.015	.013	
3.0	.144	.114	.089	.124	.098	.077	.085	.068	.054	.049	.040	.032	.016	.013	.010	
4.0	.134	.099	.072	.115	.085	.063	.079	.060	.044	.046	.035	.026	.015	.011	.009	
5.0	.126	.087	.059	.108	.076	.051	.074	.053	.036	.043	.031	.022	.014	.010	.007	
6.0	.118	.078	.049	.102	.068	.043	.070	.047	.030	.041	.028	.018	.013	.009	.006	
7.0	.112	.071	.042	.096	.061	.036	.067	.043	.026	.039	.025	.015	.013	.008	.005	
8.0	.107	.065	.036	.092	.056	.031	.063	.039	.022	.037	.023	.013	.012	.008	.004	
9.0	.102	.059	.031	.088	.052	.027	.061	.036	.019	.035	.021	.011	.011	.007	.004	
10.0	.097	.055	.027	.084	.048	.024	.058	.034	.017	.034	.020	.010	.011	.007	.003	

C Range: 0 - 360DEG
 C Interval: 15.0DEG
 Test Speed: HIGH
 Temperature:25.3DEG
 Operators:Jason
 Test Date:2022-01-20

γ Range: 0 - 90DEG
 γ Interval: 0.5DEG
 Test System:EVERFINE GO-2000B_V1 SYSTEM V2.0.362
 Humidity:58%
 Test Distance:8.967m [K=1.0000]
 Remarks:

UGR(Unified Glare Rating) Table

Test:U:220.4V I:0.0310A P:6.832W PF:0.7570 Freq:49.90Hz Lamp Flux:276.051x1 lm		
NAME: FL300-SL300-1S-4W-930-55D	TYPE:Spotlight	SERIAL No.:
SPEC.:3000K	DIM.: φ31mm*H50mm	
MFR.: NEKO LIGHTING AG		

ceiling/cavity	0.7	0.7	0.5	0.5	0.3	0.7	0.7	0.5	0.5	0.3
walls	0.5	0.3	0.5	0.3	0.3	0.5	0.3	0.5	0.3	0.3
working plane	0.2	0.2	0.2	0.2	0.2	0.2	0.2	0.2	0.2	0.2
Room dimensions	Viewed crosswise					Viewed endwise				
x = 2H y = 2H	27.7	28.7	27.9	28.9	29.0	27.1	28.1	27.3	28.2	28.4
3H	27.5	28.4	27.8	28.6	28.8	26.9	27.8	27.2	28.0	28.2
4H	27.4	28.3	27.7	28.5	28.7	26.8	27.7	27.1	27.9	28.1
6H	27.4	28.1	27.7	28.4	28.6	26.7	27.5	27.0	27.8	28.0
8H	27.3	28.1	27.6	28.3	28.6	26.7	27.4	27.0	27.7	28.0
12H	27.3	28.0	27.6	28.3	28.5	26.6	27.4	27.0	27.6	27.9
4H 2H	27.4	28.3	27.7	28.5	28.7	26.8	27.7	27.1	27.9	28.1
3H	27.3	28.0	27.6	28.3	28.5	26.7	27.4	27.0	27.6	27.9
4H	27.2	27.8	27.5	28.1	28.4	26.6	27.2	26.9	27.5	27.8
6H	27.1	27.6	27.5	28.0	28.3	26.5	27.0	26.8	27.4	27.7
8H	27.0	27.6	27.4	27.9	28.3	26.4	26.9	26.8	27.3	27.7
12H	27.0	27.5	27.4	27.8	28.2	26.4	26.8	26.8	27.2	27.6
8H 4H	27.0	27.6	27.4	27.9	28.3	26.4	26.9	26.8	27.3	27.7
6H	26.9	27.4	27.4	27.8	28.2	26.3	26.7	26.7	27.1	27.6
8H	26.9	27.3	27.3	27.7	28.1	26.3	26.6	26.7	27.1	27.5
12H	26.8	27.1	27.3	27.6	28.1	26.2	26.5	26.7	27.0	27.4
12H 4H	27.0	27.5	27.4	27.8	28.2	26.4	26.8	26.8	27.2	27.6
6H	26.9	27.3	27.3	27.7	28.1	26.3	26.6	26.7	27.1	27.5
8H	26.8	27.1	27.3	27.6	28.1	26.2	26.5	26.7	27.0	27.4
Variations with the observer position at spacings:										
S = 1.0H	+ 2.7 / -19.7					+ 2.6 / -20.4				
1.5H	+ 4.5 / -16.2					+ 4.7 / -16.4				
2.0H	+ 7.6 / -20.4					+ 8.0 / -22.6				

CIE Pub.117, 276.1 lm Total Lamp Luminous Flux Correct (8log(F/F0) = -4.5)

C Range: 0 - 360DEG
 C Interval: 15.0DEG
 Test Speed: HIGH
 Temperature:25.3DEG
 Operators:Jason
 Test Date:2022-01-20

γ Range: 0 - 90DEG
 γ Interval: 0.5DEG
 Test System:EVERFINE GO-2000B_V1 SYSTEM V2.0.362
 Humidity:58%
 Test Distance:8.967m [K=1.0000]
 Remarks:

UTILIZATION FACTORS TABLE

Test:U:220.4V I:0.0310A P:6.832W PF:0.7570 Freq:49.90Hz Lamp Flux:276.05lx1 lm		
NAME: FL300-SL300-1S-4W-930-55D	TYPE:Spotlight	SERIAL No.:
SPEC.:3000K	DIM.: φ31mm*H50mm	
MFR.: NEKO LIGHTING AG		

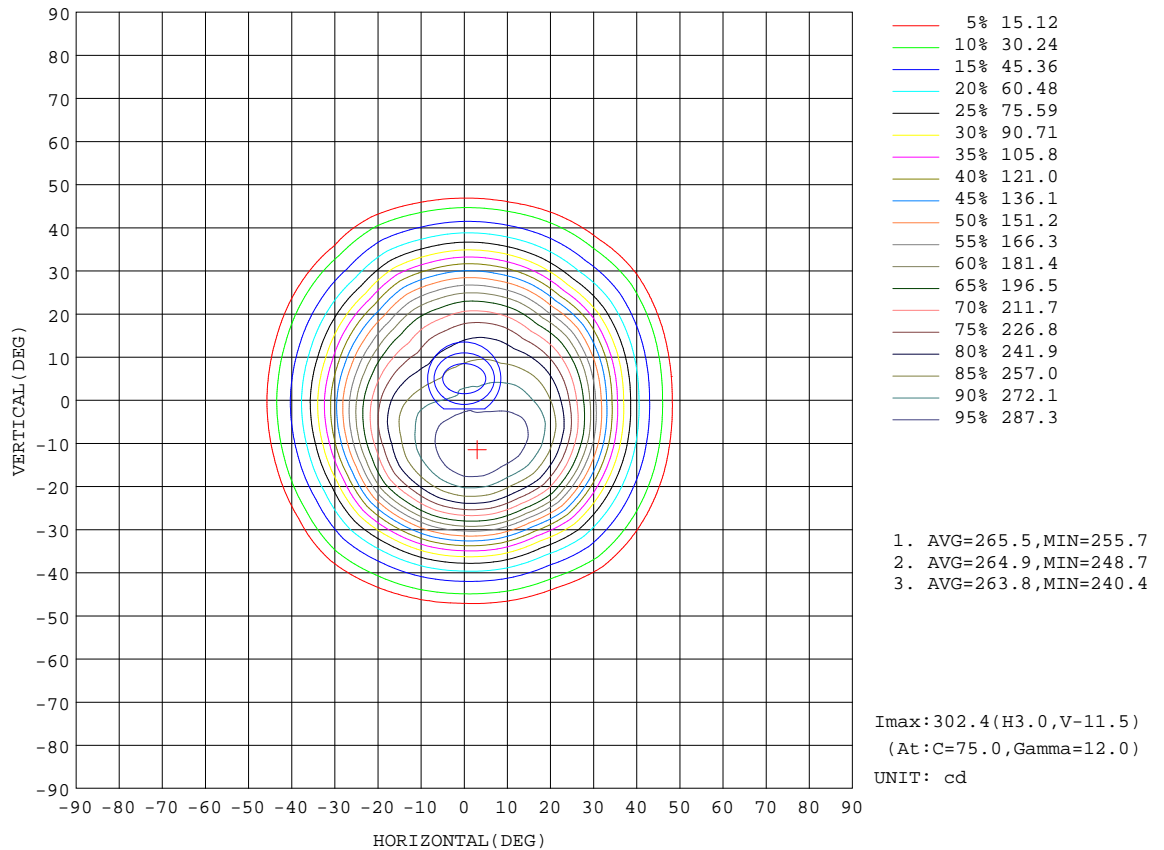
REFLECTANCE										
Ceiling	0.8	0.8	0.8	0.7	0.7	0.7	0.5	0.5	0.5	0
Walls	0.7	0.5	0.3	0.7	0.5	0.3	0.7	0.5	0.3	0
Working plane	0.2	0.2	0.2	0.2	0.2	0.2	0.2	0.2	0.2	0
ROOM INDEX	UTILIZATION FACTORS(PERCENT) $k(RI) \times RCR = 5$									
k = 0.60	86	80	76	86	80	76	85	79	76	72
0.80	94	88	84	93	88	84	92	87	84	80
1.00	99	93	89	98	93	89	96	93	89	85
1.25	103	98	94	102	97	94	100	96	93	89
1.50	106	101	98	105	100	97	102	99	96	92
2.00	109	104	101	107	103	100	104	101	99	94
2.50	110	106	103	109	105	102	105	103	101	95
3.00	112	108	106	110	107	105	107	104	102	96
4.00	114	111	109	112	109	107	108	106	105	98
5.00	115	113	111	113	111	109	109	107	106	99
ROOM INDEX	UF(total)									Direct
According to DIN EN 13032-2 2004			Suspended				SHRNOM = 1.25			

C Range: 0 - 360DEG
C Interval: 15.0DEG
Test Speed: HIGH
Temperature:25.3DEG
Operators:Jason
Test Date:2022-01-20

γ Range: 0 - 90DEG
γ Interval: 0.5DEG
Test System:EVERFINE GO-2000B_V1 SYSTEM V2.0.362
Humidity:58%
Test Distance:8.967m [K=1.0000]
Remarks:

ISOCANDELA DIAGRAM

Test:U:220.4V I:0.0310A P:6.832W PF:0.7570 Freq:49.90Hz Lamp Flux:276.051x1 lm		
NAME: FL300-SL300-1S-4W-930-55D	TYPE:Spotlight	SERIAL No.:
SPEC.:3000K	DIM.: φ31mm*H50mm	
MFR.: NEKO LIGHTING AG		



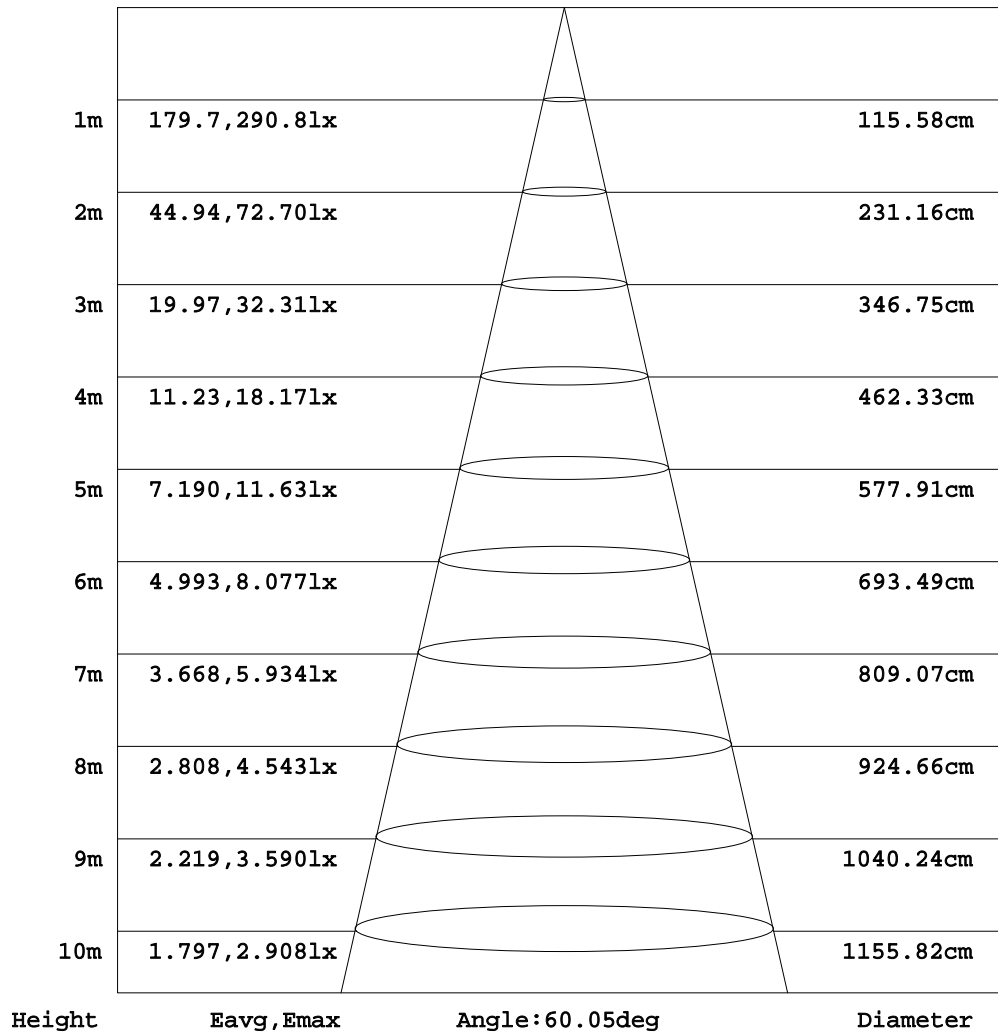
C Range: 0 - 360DEG
C Interval: 15.0DEG
Test Speed: HIGH
Temperature:25.3DEG
Operators:Jason
Test Date:2022-01-20

γ Range: 0 - 90DEG
γ Interval: 0.5DEG
Test System:EVERFINE GO-2000B_V1 SYSTEM V2.0.362
Humidity:58%
Test Distance:8.967m [K=1.0000]
Remarks:

AAI Figure

Test:U:220.4V I:0.0310A P:6.832W PF:0.7570 Freq:49.90Hz Lamp Flux:276.05lx1 lm		
NAME: FL300-SL300-1S-4W-930-55D	TYPE:Spotlight	SERIAL No.:
SPEC.:3000K	DIM.: φ31mm*H50mm	
MFR.: NEKO LIGHTING AG		

Flux out:195.9 lm



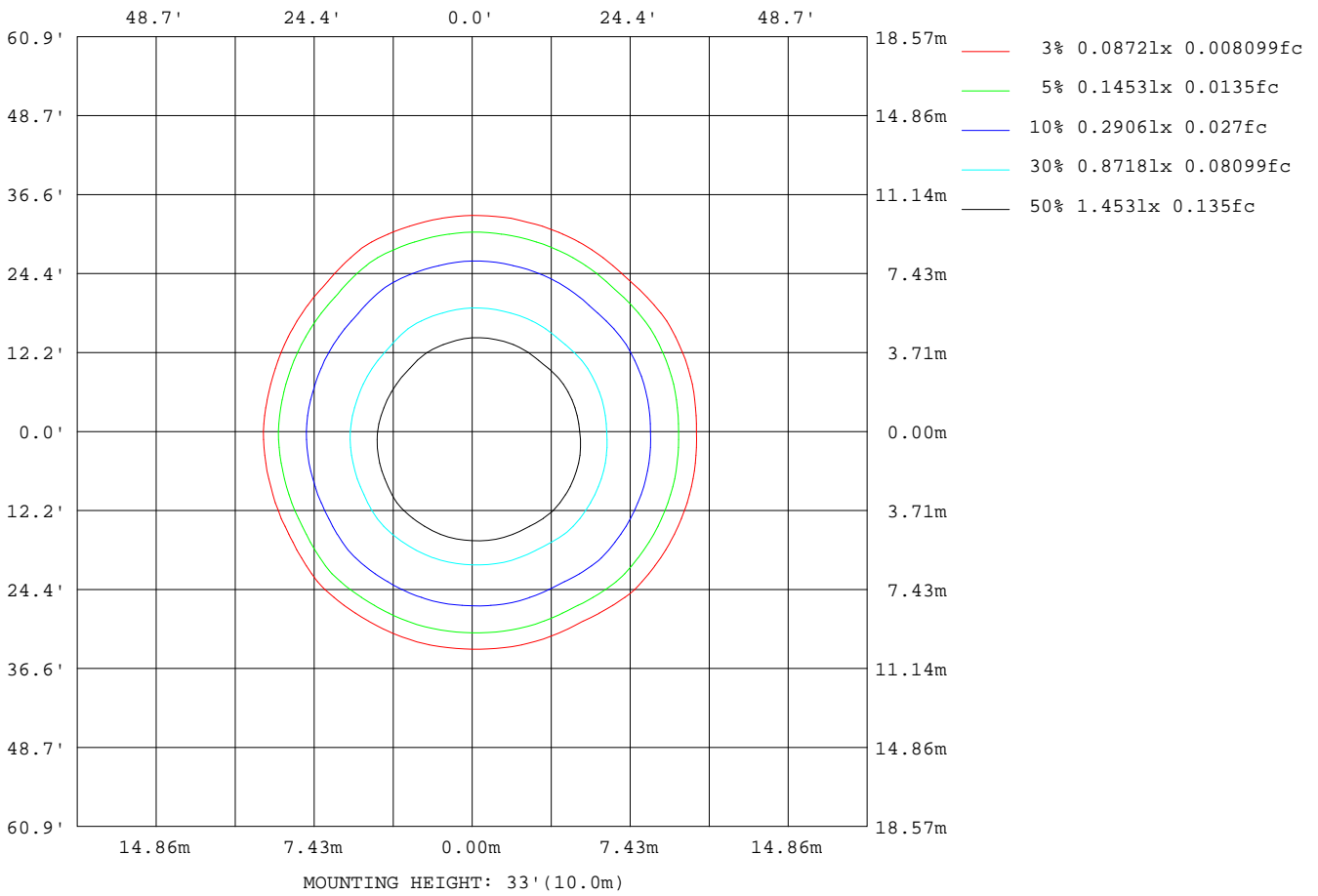
Note:The Curves indicate the illuminated area and the average illumination when the luminaire is at different distance.

C Range: 0 - 360DEG
C Interval: 15.0DEG
Test Speed: HIGH
Temperature:25.3DEG
Operators:Jason
Test Date:2022-01-20

γ Range: 0 - 90DEG
γ Interval: 0.5DEG
Test System:EVERFINE GO-2000B_V1 SYSTEM V2.0.362
Humidity:58%
Test Distance:8.967m [K=1.0000]
Remarks:

ISOLUX DIAGRAM

Test:U:220.4V I:0.0310A P:6.832W PF:0.7570 Freq:49.90Hz Lamp Flux:276.05lx1 lm		
NAME: FL300-SL300-1S-4W-930-55D	TYPE:Spotlight	SERIAL No.:
SPEC.:3000K	DIM.: φ31mm*H50mm	
MFR.: NEKO LIGHTING AG		



C Range: 0 - 360DEG
 C Interval: 15.0DEG
 Test Speed: HIGH
 Temperature:25.3DEG
 Operators:Jason
 Test Date:2022-01-20

γ Range: 0 - 90DEG
 γ Interval: 0.5DEG
 Test System:EVERFINE GO-2000B_V1 SYSTEM V2.0.362
 Humidity:58%
 Test Distance:8.967m [K=1.0000]
 Remarks:

LED Avg.L Report

Test:U:220.4V I:0.0310A P:6.832W PF:0.7570 Freq:49.90Hz Lamp Flux:276.051x1 lm		
NAME: FL300-SL300-1S-4W-930-55D	TYPE:Spotlight	SERIAL No.:
SPEC.:3000K	DIM.: φ31mm*H50mm	
MFR.: NEKO LIGHTING AG		

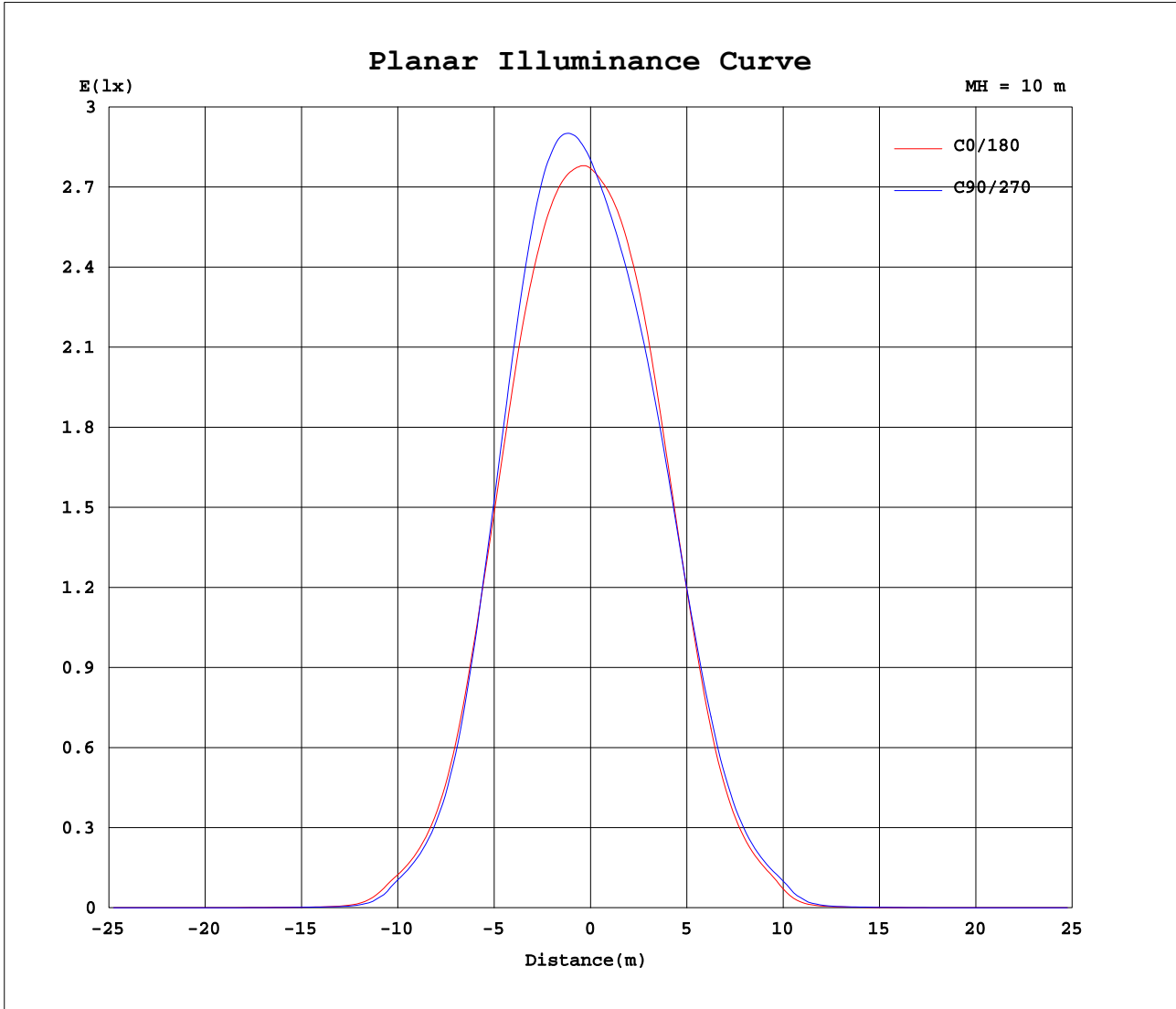
AvgL	cd/m2
L_0~180 (65) av	279
L_0~180 (75) av	121
L_0~180 (85) av	1
L_90~270 (65) av	279
L_90~270 (75) av	93
L_90~270 (85) av	0
L_45 (65) av	291
L_45 (75) av	100
L_45 (85) av	39

Standard: GB/T 29293-2012

C Range: 0 - 360DEG
C Interval: 15.0DEG
Test Speed: HIGH
Temperature:25.3DEG
Operators:Jason
Test Date:2022-01-20

γ Range: 0 - 90DEG
γ Interval: 0.5DEG
Test System:EVERFINE GO-2000B_V1 SYSTEM V2.0.362
Humidity:58%
Test Distance:8.967m [K=1.0000]
Remarks:

Planar Illuminance Curve



C Range: 0 - 360DEG
 C Interval: 15.0DEG
 Test Speed: HIGH
 Temperature: 25.3DEG
 Operators: Jason
 Test Date: 2022-01-20

γ Range: 0 - 90DEG
 γ Interval: 0.5DEG
 Test System: EVERFINE GO-2000B_V1 SYSTEM V2.0.362
 Humidity: 58%
 Test Distance: 8.967m [K=1.0000]
 Remarks:

LUMINOUS DISTRIBUTION INTENSITY DATA

Test:U:220.4V I:0.0310A P:6.832W PF:0.7570 Freq:49.90Hz Lamp Flux:276.051x1 lm		
NAME: FL300-SL300-1S-4W-930-55D	TYPE:Spotlight	SERIAL No.:
SPEC.:3000K	DIM.: φ31mm*H50mm	
MFR.: NEKO LIGHTING AG		

Table--1

UNIT: cd

C (DEG) γ (DEG)	0	15	30	45	60	75	90	105	120	135	150	165	180	195	210	225	240	255	270
0	277	277	277	277	280	280	280	280	280	279	280	280	277	277	277	277	280	280	280
5	280	283	287	289	293	293	293	291	289	285	283	279	272	269	266	264	266	265	266
10	281	287	293	297	301	301	300	297	292	286	279	274	265	258	252	248	250	251	253
15	274	285	292	296	297	298	296	290	282	274	266	260	251	241	233	228	232	234	238
20	257	270	276	278	275	276	274	267	259	251	239	232	223	213	206	203	207	210	215
25	221	233	239	242	235	235	231	225	216	211	197	188	181	172	167	166	173	176	180
30	172	182	186	189	177	176	171	167	161	156	142	136	131	125	122	121	131	132	136
35	112	119	121	122	109	109	105	103	98.7	96.6	86.0	82.8	81.4	77.5	76.7	76.5	85.4	86.3	89.4
40	64.1	67.1	68.3	68.6	60.0	60.0	58.0	57.1	55.0	54.7	48.5	47.0	47.0	45.1	44.6	45.0	51.1	51.3	53.3
45	35.1	36.6	36.9	36.9	31.5	31.0	29.7	29.3	28.1	28.0	21.5	20.2	20.0	17.9	17.5	18.5	26.8	27.0	28.3
50	7.06	8.10	8.00	7.81	5.27	5.12	4.58	4.47	4.15	4.26	3.09	2.93	2.85	2.65	2.75	2.88	3.95	3.96	4.16
55	1.77	1.82	1.89	1.86	1.62	1.54	1.47	1.40	1.43	1.42	1.23	1.13	1.12	1.11	1.11	1.20	1.45	1.50	1.46
60	0.68	0.69	0.75	0.72	0.58	0.53	0.53	0.49	0.48	0.43	0.35	0.28	0.25	0.27	0.24	0.33	0.43	0.49	0.51
65	0.16	0.11	0.16	0.10	0.13	0.07	0.10	0.07	0.11	0.06	0.08	0.03	0.02	0.07	0.03	0.08	0.07	0.11	0.07
70	0.08	0.04	0.08	0.03	0.07	0.02	0.06	0.01	0.05	0.01	0.04	0.00	0.00	0.05	0.00	0.05	0.01	0.06	0.02
75	0.05	0.00	0.05	0.01	0.04	0.01	0.04	0.00	0.03	0.00	0.02	0.00	0.00	0.02	0.00	0.03	0.00	0.04	0.00
80	0.03	0.00	0.02	0.00	0.01	0.00	0.02	0.00	0.01	0.00	0.01	0.00	0.00	0.01	0.00	0.01	0.00	0.02	0.00
85	0.00	0.00	0.01	0.00	0.00	0.00	0.00	0.00	0.00	0.00	0.00	0.00	0.00	0.00	0.00	0.00	0.00	0.00	0.00
90	0.00	0.00	0.00	0.00	0.00	0.00	0.00	0.00	0.00	0.00	0.00	0.00	0.00	0.00	0.00	0.00	0.00	0.00	0.00

C Range: 0 - 360DEG
C Interval: 15.0DEG
Test Speed: HIGH
Temperature:25.3DEG
Operators:Jason
Test Date:2022-01-20

γ Range: 0 - 90DEG
γ Interval: 0.5DEG
Test System:EVERFINE GO-2000B_V1 SYSTEM V2.0.362
Humidity:58%
Test Distance:8.967m [K=1.0000]
Remarks:

