

LED Linear Light FL600-GL600-11W-840



| | | |
|---------------------|---------|--------------------------|
| Light Output Ratio: | 100.0% | |
| Luminaire Power: | 10.95 W | |
| SHR Nominal: | 1.25 | Calculated using the TM5 |
| SHR Maximum: | 1.35 | fine grid method. |

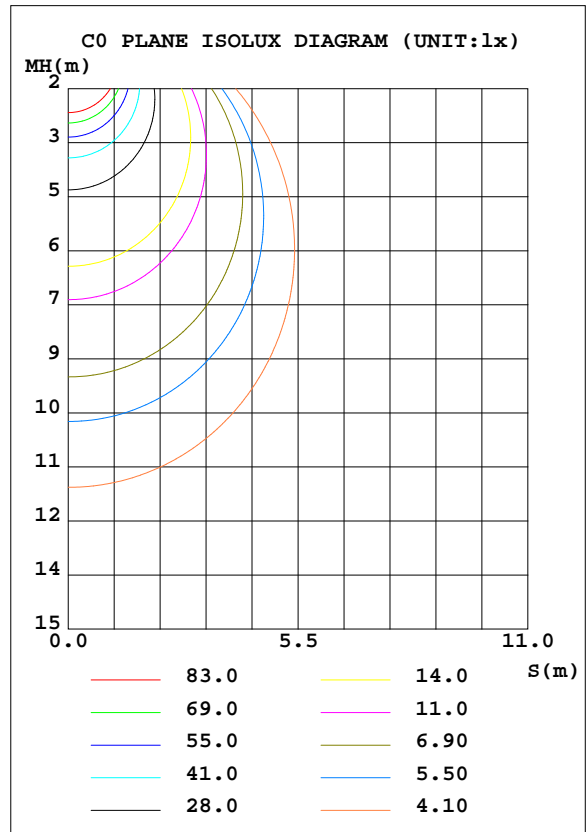
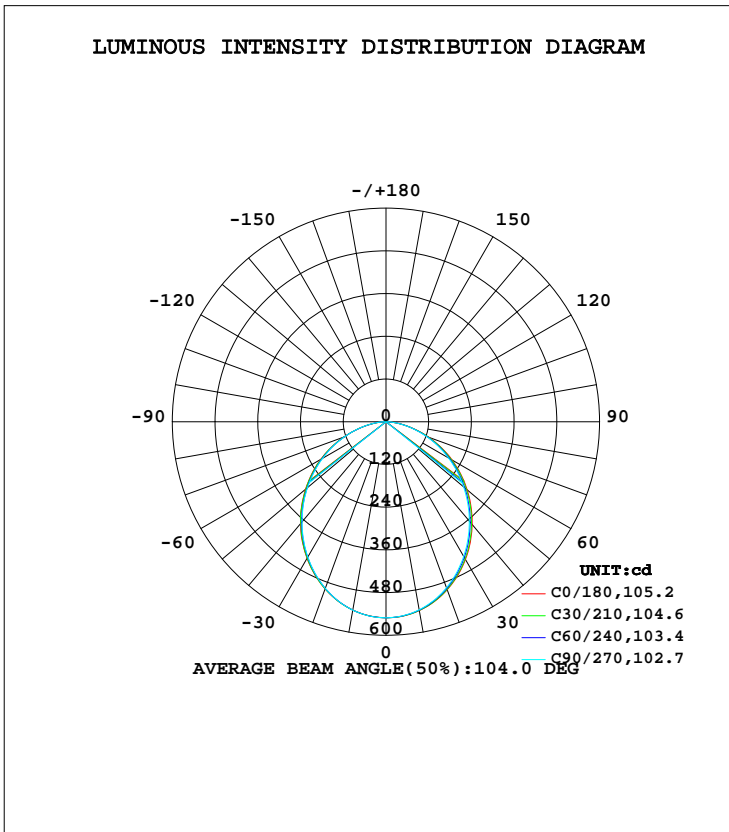
C Range: 0 - 360DEG
C Interval: 15.0DEG
Test Speed: HIGH
Temperature:25.3DEG
Operators:Meng yongjian
Test Date:2018-04-08

γ Range: 0 - 90DEG
 γ Interval: 1.0DEG
Test System:EVERFINE GO-2000B_V1 SYSTEM V2.0.288
Humidity:52%
Test Distance:5.850m [K=1.0000]
Remarks:

LUMINAIRE PHOTOMETRIC TEST REPORT

| | | |
|---|--------------------------|-------------|
| Test:U:43.80V I:0.2500A P:10.95W PF:1.000 Freq:0Hz Lamp Flux:1428.58x1 lm | | |
| NAME: FL600-GL600-11W-840 | TYPE:Linear Light | SERIAL No.: |
| SPEC.:4000K | DIM.: L600mm*W50mm*H80mm | |
| MFR.: NEKO LIGHTING AG | | |

| DATA OF LAMP | | PHOTOMETRIC DATA Eff: 130.46 lm/W | | | |
|------------------|---------------|-----------------------------------|--------|--------------------|----------|
| MODEL | SAMSUNG-4000K | I _{max} (cd) | 550.8 | S/MH(C0/180) | 1.20 |
| NOMINAL POWER(W) | 11 | LOR(%) | 100.0 | S/MH(C90/270) | 1.19 |
| RATED VOLTAGE(V) | 48 | TOTAL FLUX(lm) | 1428.6 | η UP, DN(C0-180) | 0.0,49.8 |
| NOMINAL FLUX(lm) | 1428.58 | CIE CLASS | DIRECT | η UP, DN(C180-360) | 0.0,50.2 |
| LAMPS INSIDE | 1 | η up(%) | 0.0 | CIBSE SHR NOM | 1.25 |
| TEST VOLTAGE(V) | 43.7 | η down(%) | 100.0 | CIBSE SHR MAX | 1.35 |



C Range: 0 - 360DEG
 C Interval: 15.0DEG
 Test Speed: HIGH
 Temperature:25.3DEG
 Operators:Meng yongjian
 Test Date:2018-04-08

γ Range: 0 - 90DEG
 γ Interval: 1.0DEG
 Test System:EVERFINE GO-2000B_V1 SYSTEM V2.0.288
 Humidity:52%
 Test Distance:5.850m [K=1.0000]
 Remarks:

ZONAL FLUX DIAGRAM

ZONAL FLUX DIAGRAM:

| γ | C0 | C45 | C90 | C135 | C180 | C225 | C270 | C315 | γ | Φ zone | Φ total | %lum, lamp |
|----------|-----------------------|--------|--------|--------|--------|--------|--------|--------|----------|-------------|--------------|------------|
| 10 | 538.7 | 538.1 | 536.4 | 536.5 | 537.2 | 536.9 | 537.4 | 538.5 | 0- 10 | 51.94 | 51.94 | 3.64,3.64 |
| 20 | 502.5 | 500.5 | 496.5 | 497.7 | 500.0 | 498.5 | 498.2 | 501.1 | 10- 20 | 146.9 | 198.9 | 13.9,13.9 |
| 30 | 446.6 | 443.0 | 436.8 | 439.3 | 443.5 | 440.4 | 439.1 | 443.7 | 20- 30 | 217.6 | 416.4 | 29.2,29.2 |
| 40 | 376.6 | 371.8 | 364.2 | 367.8 | 373.7 | 369.4 | 367.1 | 372.8 | 30- 40 | 254.7 | 671.1 | 47,47 |
| 50 | 297.8 | 292.7 | 284.8 | 288.9 | 295.2 | 290.8 | 288.1 | 293.8 | 40- 50 | 255.9 | 927.0 | 64.9,64.9 |
| 60 | 214.1 | 209.5 | 202.4 | 206.1 | 212.0 | 207.9 | 206.0 | 210.8 | 50- 60 | 223.8 | 1151 | 80.6,80.6 |
| 70 | 128.6 | 125.4 | 120.8 | 122.4 | 126.3 | 124.7 | 124.0 | 127.2 | 60- 70 | 165.0 | 1316 | 92.1,92.1 |
| 80 | 48.85 | 49.18 | 47.37 | 47.42 | 47.91 | 49.16 | 50.64 | 50.71 | 70- 80 | 90.44 | 1406 | 98.4,98.4 |
| 90 | 0.2930 | 0.2952 | 0.2952 | 0.5925 | 0.8265 | 0.6691 | 0.5903 | 0.4001 | 80- 90 | 22.32 | 1429 | 100,100 |
| 100 | | | | | | | | | 90-100 | | | |
| 110 | | | | | | | | | 100-110 | | | |
| 120 | | | | | | | | | 110-120 | | | |
| 130 | | | | | | | | | 120-130 | | | |
| 140 | | | | | | | | | 130-140 | | | |
| 150 | | | | | | | | | 140-150 | | | |
| 160 | | | | | | | | | 150-160 | | | |
| 170 | | | | | | | | | 160-170 | | | |
| 180 | | | | | | | | | 170-180 | | | |
| DEG | LUMINOUS INTENSITY:cd | | | | | | | | | UNIT:lm | | |

Conical surface Flux(90deg): 801.12 lm

%lum = 56.1%
%lamp = 56.1%

Conical surface Flux(120deg): 1150.8 lm

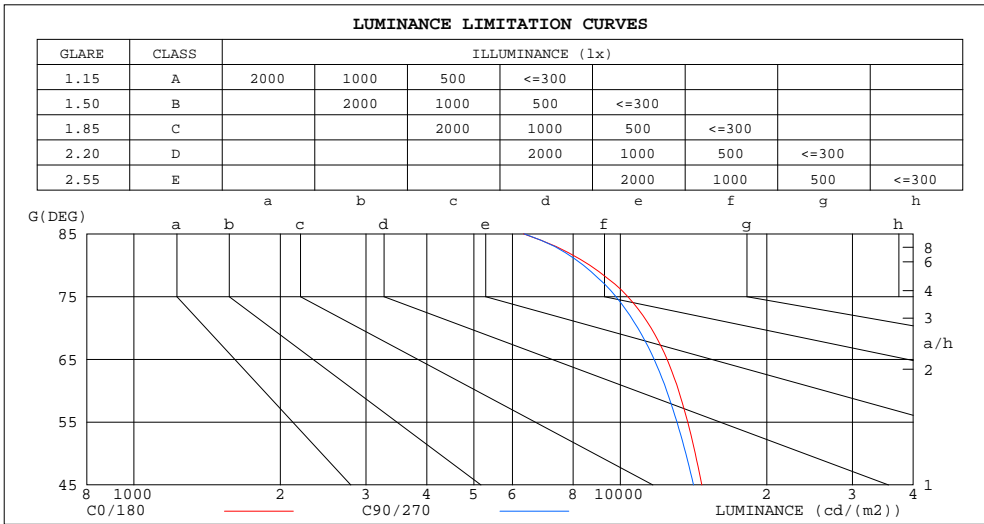
%lum = 80.6%
%lamp = 80.6%

C Range: 0 - 360DEG
C Interval: 15.0DEG
Test Speed: HIGH
Temperature:25.3DEG
Operators:Meng yongjian
Test Date:2018-04-08

γ Range: 0 - 90DEG
 γ Interval: 1.0DEG
Test System:EVERFINE GO-2000B_V1 SYSTEM V2.0.288
Humidity:52%
Test Distance:5.850m [K=1.0000]
Remarks:

LUMINANCE LIMITATION CURVES

| | | |
|---|--------------------------|-------------|
| Test:U:43.80V I:0.2500A P:10.95W PF:1.000 Freq:0Hz Lamp Flux:1428.58x1 lm | | |
| NAME: FL600-GL600-11W-840 | TYPE:Linear Light | SERIAL No.: |
| SPEC.:4000K | DIM.: L600mm*W50mm*H80mm | |
| MFR.: NEKO LIGHTING AG | | |



| LUMINANCE cd/(m2) | | |
|-------------------|--------|---------|
| G(DEG) | C0/180 | C90/270 |
| 85 | 6324 | 6344 |
| 80 | 8656 | 8394 |
| 75 | 10353 | 9794 |
| 70 | 11565 | 10865 |
| 65 | 12476 | 11734 |
| 60 | 13175 | 12453 |
| 55 | 13754 | 13073 |
| 50 | 14257 | 13632 |
| 45 | 14707 | 14144 |

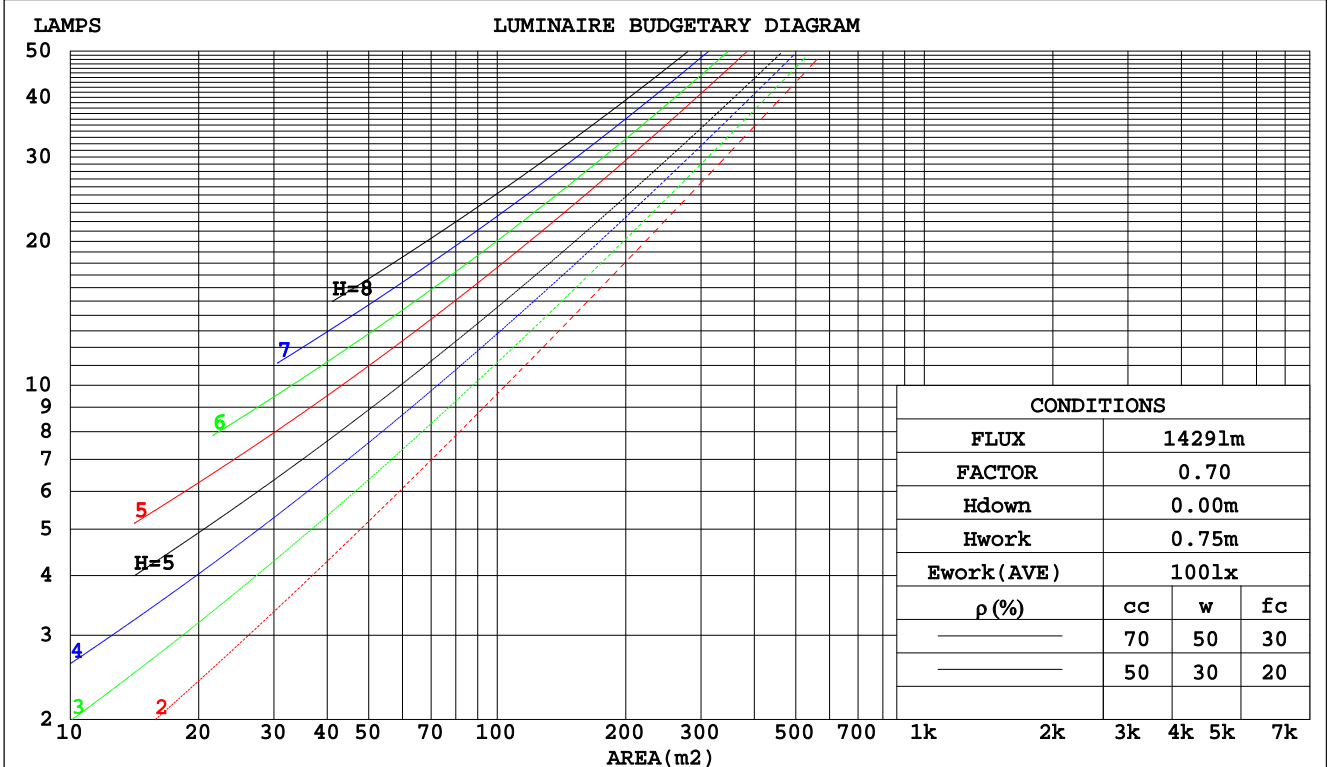
C Range: 0 - 360DEG
 C Interval: 15.0DEG
 Test Speed: HIGH
 Temperature:25.3DEG
 Operators:Meng yongjian
 Test Date:2018-04-08

γ Range: 0 - 90DEG
 γ Interval: 1.0DEG
 Test System:EVERFINE GO-2000B_V1 SYSTEM V2.0.288
 Humidity:52%
 Test Distance:5.850m [K=1.0000]
 Remarks:

CU AND LUMINAIRE BUDGETARY ESTIMATE DIAGRAM

| | | |
|---|--------------------------|-------------|
| Test:U:43.80V I:0.2500A P:10.95W PF:1.000 Freq:0Hz Lamp Flux:1428.58x1 lm | | |
| NAME: FL600-GL600-11W-840 | TYPE:Linear Light | SERIAL No.: |
| SPEC.:4000K | DIM.: L600mm*W50mm*H80mm | |
| MFR.: NEKO LIGHTING AG | | |

| pcc | 80% | | | 70% | | | 50% | | | 30% | | | 10% | | | 0 |
|------|---------------------------------|------|------|------|------|------|------|------|------|------|------|------|------|------|------|-----|
| | 50% | 30% | 10% | 50% | 30% | 10% | 50% | 30% | 10% | 50% | 30% | 10% | 50% | 30% | 10% | 0 |
| pw | | | | | | | | | | | | | | | | |
| pfc | | | | | | | | | | | | | | | | |
| RCR | RCR:Room Cavity Ratio | | | | | | | | | | | | | | | |
| | Coefficients of Utilization(CU) | | | | | | | | | | | | | | | |
| 0.0 | 1.19 | 1.19 | 1.19 | 1.16 | 1.16 | 1.16 | 1.11 | 1.11 | 1.11 | 1.06 | 1.06 | 1.06 | 1.02 | 1.02 | 1.02 | .00 |
| 1.0 | 1.04 | 1.00 | .97 | 1.02 | .98 | .95 | .98 | .95 | .92 | .94 | .91 | .89 | .90 | .88 | .86 | .84 |
| 2.0 | .91 | .85 | .79 | .89 | .83 | .78 | .86 | .81 | .76 | .83 | .78 | .75 | .80 | .76 | .73 | .71 |
| 3.0 | .80 | .72 | .66 | .79 | .71 | .65 | .76 | .69 | .64 | .73 | .68 | .63 | .71 | .66 | .62 | .60 |
| 4.0 | .71 | .63 | .56 | .70 | .62 | .56 | .68 | .61 | .55 | .65 | .59 | .54 | .63 | .58 | .53 | .51 |
| 5.0 | .64 | .55 | .49 | .63 | .54 | .48 | .61 | .53 | .48 | .59 | .52 | .47 | .57 | .51 | .47 | .45 |
| 6.0 | .58 | .49 | .42 | .57 | .48 | .42 | .55 | .47 | .42 | .53 | .47 | .42 | .52 | .46 | .41 | .39 |
| 7.0 | .52 | .44 | .38 | .52 | .43 | .37 | .50 | .43 | .37 | .49 | .42 | .37 | .47 | .41 | .37 | .35 |
| 8.0 | .48 | .39 | .34 | .47 | .39 | .34 | .46 | .39 | .33 | .45 | .38 | .33 | .43 | .37 | .33 | .31 |
| 9.0 | .44 | .36 | .30 | .43 | .36 | .30 | .42 | .35 | .30 | .41 | .35 | .30 | .40 | .34 | .30 | .28 |
| 10.0 | .41 | .33 | .28 | .40 | .33 | .27 | .39 | .32 | .27 | .38 | .32 | .27 | .37 | .31 | .27 | .25 |



C Range: 0 - 360DEG
 C Interval: 15.0DEG
 Test Speed: HIGH
 Temperature: 25.3DEG
 Operators: Meng yongjian
 Test Date: 2018-04-08

γ Range: 0 - 90DEG
 γ Interval: 1.0DEG
 Test System: EVERFINE GO-2000B_V1 SYSTEM V2.0.288
 Humidity: 52%
 Test Distance: 5.850m [K=1.0000]
 Remarks:

WEC AND CCEC

| | | |
|---|--------------------------|-------------|
| Test:U:43.80V I:0.2500A P:10.95W PF:1.000 Freq:0Hz Lamp Flux:1428.58x1 lm | | |
| NAME: FL600-GL600-11W-840 | TYPE:Linear Light | SERIAL No.: |
| SPEC.:4000K | DIM.: L600mm*W50mm*H80mm | |
| MFR.: NEKO LIGHTING AG | | |

| ρcc | 80% | | | 70% | | | 50% | | | 30% | | | 10% | | | 0 |
|------|-----------------------|------|------|------|------|------|---------------------------------|------|------|------|------|------|------|------|------|---|
| ρw | 50% | 30% | 10% | 50% | 30% | 10% | 50% | 30% | 10% | 50% | 30% | 10% | 50% | 30% | 10% | 0 |
| ρfc | 20% | | | 20% | | | 20% | | | 20% | | | 20% | | | 0 |
| RCR | RCR:Room Cavity Ratio | | | | | | Wall Exitance Coefficients(WEC) | | | | | | | | | |
| 0.0 | | | | | | | | | | | | | | | | |
| 1.0 | .299 | .170 | .054 | .292 | .167 | .053 | .279 | .160 | .051 | .267 | .154 | .049 | .256 | .148 | .048 | |
| 2.0 | .283 | .155 | .048 | .277 | .153 | .047 | .266 | .148 | .046 | .255 | .143 | .045 | .245 | .139 | .044 | |
| 3.0 | .263 | .140 | .042 | .258 | .138 | .042 | .248 | .134 | .041 | .238 | .130 | .040 | .229 | .127 | .039 | |
| 4.0 | .244 | .127 | .037 | .239 | .125 | .037 | .230 | .122 | .036 | .221 | .119 | .036 | .213 | .116 | .035 | |
| 5.0 | .226 | .115 | .033 | .222 | .114 | .033 | .213 | .111 | .033 | .206 | .109 | .032 | .199 | .106 | .032 | |
| 6.0 | .210 | .105 | .030 | .206 | .104 | .030 | .199 | .102 | .030 | .192 | .100 | .029 | .186 | .098 | .029 | |
| 7.0 | .196 | .097 | .027 | .192 | .096 | .027 | .186 | .094 | .027 | .180 | .092 | .027 | .174 | .090 | .027 | |
| 8.0 | .183 | .089 | .025 | .180 | .089 | .025 | .174 | .087 | .025 | .169 | .085 | .025 | .164 | .084 | .024 | |
| 9.0 | .172 | .083 | .023 | .169 | .082 | .023 | .164 | .081 | .023 | .159 | .080 | .023 | .154 | .078 | .023 | |
| 10.0 | .162 | .077 | .021 | .159 | .077 | .021 | .154 | .076 | .021 | .150 | .074 | .021 | .146 | .073 | .021 | |

| ρcc | 80% | | | 70% | | | 50% | | | 30% | | | 10% | | | 0 |
|------|-----------------------|------|------|------|------|------|--|------|------|------|------|------|------|------|------|---|
| ρw | 50% | 30% | 10% | 50% | 30% | 10% | 50% | 30% | 10% | 50% | 30% | 10% | 50% | 30% | 10% | 0 |
| ρfc | 20% | | | 20% | | | 20% | | | 20% | | | 20% | | | 0 |
| RCR | RCR:Room Cavity Ratio | | | | | | Ceiling Cavity Exitance Coefficients(CCEC) | | | | | | | | | |
| 0.0 | .190 | .190 | .190 | .163 | .163 | .163 | .111 | .111 | .111 | .064 | .064 | .064 | .020 | .020 | .020 | |
| 1.0 | .180 | .156 | .135 | .154 | .134 | .116 | .105 | .092 | .080 | .060 | .053 | .047 | .019 | .017 | .015 | |
| 2.0 | .171 | .132 | .099 | .147 | .114 | .086 | .100 | .079 | .060 | .058 | .046 | .035 | .019 | .015 | .011 | |
| 3.0 | .163 | .114 | .075 | .140 | .099 | .065 | .096 | .068 | .046 | .055 | .040 | .027 | .018 | .013 | .009 | |
| 4.0 | .155 | .101 | .059 | .133 | .087 | .051 | .092 | .061 | .036 | .053 | .036 | .021 | .017 | .012 | .007 | |
| 5.0 | .148 | .090 | .048 | .127 | .078 | .042 | .088 | .055 | .029 | .051 | .032 | .017 | .016 | .010 | .006 | |
| 6.0 | .141 | .082 | .040 | .121 | .071 | .035 | .084 | .050 | .024 | .048 | .029 | .015 | .016 | .010 | .005 | |
| 7.0 | .134 | .075 | .034 | .115 | .065 | .029 | .080 | .046 | .021 | .046 | .027 | .012 | .015 | .009 | .004 | |
| 8.0 | .128 | .069 | .029 | .110 | .060 | .025 | .076 | .042 | .018 | .044 | .025 | .011 | .014 | .008 | .004 | |
| 9.0 | .122 | .064 | .025 | .105 | .056 | .022 | .073 | .039 | .016 | .042 | .023 | .009 | .014 | .008 | .003 | |
| 10.0 | .116 | .060 | .023 | .100 | .052 | .020 | .069 | .037 | .014 | .041 | .022 | .008 | .013 | .007 | .003 | |

C Range: 0 - 360DEG
 C Interval: 15.0DEG
 Test Speed: HIGH
 Temperature:25.3DEG
 Operators:Meng yongjian
 Test Date:2018-04-08

γ Range: 0 - 90DEG
 γ Interval: 1.0DEG
 Test System:EVERFINE GO-2000B_V1 SYSTEM V2.0.288
 Humidity:52%
 Test Distance:5.850m [K=1.0000]
 Remarks:

UGR(Unified Glare Rating) Table

| | | |
|---|--------------------------|-------------|
| Test:U:43.80V I:0.2500A P:10.95W PF:1.000 Freq:0Hz Lamp Flux:1428.58x1 lm | | |
| NAME: FL600-GL600-11W-840 | TYPE:Linear Light | SERIAL No.: |
| SPEC.:4000K | DIM.: L600mm*W50mm*H80mm | |
| MFR.: NEKO LIGHTING AG | | |

| | | | | | | | | | | |
|--|------------------|------|------|------|------|----------------|------|------|------|------|
| ceiling/cavity | 0.7 | 0.7 | 0.5 | 0.5 | 0.3 | 0.7 | 0.7 | 0.5 | 0.5 | 0.3 |
| walls | 0.5 | 0.3 | 0.5 | 0.3 | 0.3 | 0.5 | 0.3 | 0.5 | 0.3 | 0.3 |
| working plane | 0.2 | 0.2 | 0.2 | 0.2 | 0.2 | 0.2 | 0.2 | 0.2 | 0.2 | 0.2 |
| Room dimensions | Viewed crosswise | | | | | Viewed endwise | | | | |
| x = 2H y = 2H | 20.7 | 22.2 | 21.0 | 22.4 | 22.6 | 20.4 | 21.9 | 20.7 | 22.1 | 22.3 |
| 3H | 22.1 | 23.5 | 22.4 | 23.7 | 24.0 | 21.8 | 23.2 | 22.1 | 23.4 | 23.7 |
| 4H | 22.6 | 23.9 | 23.0 | 24.2 | 24.5 | 22.3 | 23.6 | 22.6 | 23.9 | 24.2 |
| 6H | 23.0 | 24.2 | 23.3 | 24.5 | 24.8 | 22.7 | 23.9 | 23.0 | 24.2 | 24.5 |
| 8H | 23.1 | 24.3 | 23.4 | 24.5 | 24.8 | 22.8 | 24.0 | 23.1 | 24.3 | 24.5 |
| 12H | 23.1 | 24.2 | 23.5 | 24.5 | 24.8 | 22.8 | 24.0 | 23.2 | 24.3 | 24.6 |
| 4H 2H | 21.2 | 22.5 | 21.5 | 22.8 | 23.0 | 21.0 | 22.4 | 21.4 | 22.6 | 22.9 |
| 3H | 22.8 | 24.0 | 23.2 | 24.3 | 24.6 | 22.6 | 23.7 | 22.9 | 24.0 | 24.3 |
| 4H | 23.5 | 24.5 | 23.9 | 24.8 | 25.2 | 23.2 | 24.3 | 23.6 | 24.6 | 24.9 |
| 6H | 23.9 | 24.9 | 24.3 | 25.2 | 25.6 | 23.7 | 24.6 | 24.1 | 25.0 | 25.3 |
| 8H | 24.1 | 24.9 | 24.5 | 25.3 | 25.7 | 23.8 | 24.7 | 24.2 | 25.1 | 25.5 |
| 12H | 24.1 | 24.9 | 24.6 | 25.3 | 25.7 | 23.9 | 24.7 | 24.3 | 25.1 | 25.5 |
| 8H 4H | 23.7 | 24.6 | 24.1 | 24.9 | 25.3 | 23.5 | 24.3 | 23.9 | 24.7 | 25.1 |
| 6H | 24.3 | 25.0 | 24.7 | 25.4 | 25.8 | 24.1 | 24.8 | 24.5 | 25.2 | 25.6 |
| 8H | 24.5 | 25.1 | 25.0 | 25.6 | 26.0 | 24.3 | 24.9 | 24.7 | 25.3 | 25.8 |
| 12H | 24.6 | 25.2 | 25.1 | 25.6 | 26.1 | 24.4 | 25.0 | 24.9 | 25.4 | 25.9 |
| 12H 4H | 23.7 | 24.5 | 24.1 | 24.9 | 25.3 | 23.5 | 24.3 | 23.9 | 24.7 | 25.1 |
| 6H | 24.3 | 25.0 | 24.8 | 25.4 | 25.8 | 24.1 | 24.7 | 24.6 | 25.2 | 25.6 |
| 8H | 24.6 | 25.1 | 25.0 | 25.6 | 26.0 | 24.4 | 24.9 | 24.8 | 25.4 | 25.8 |
| Variations with the observer position at spacings: | | | | | | | | | | |
| S = 1.0H | + 0.2 / - 0.2 | | | | | + 0.2 / - 0.2 | | | | |
| 1.5H | + 0.2 / - 0.3 | | | | | + 0.2 / - 0.3 | | | | |
| 2.0H | + 0.2 / - 0.3 | | | | | + 0.2 / - 0.3 | | | | |

CIE Pub.117, 1429 lm Total Lamp Luminous Flux Correct (8log(F/F0) = 1.2)

C Range: 0 - 360DEG
 C Interval: 15.0DEG
 Test Speed: HIGH
 Temperature:25.3DEG
 Operators:Meng yongjian
 Test Date:2018-04-08

γ Range: 0 - 90DEG
 γ Interval: 1.0DEG
 Test System:EVERFINE GO-2000B_V1 SYSTEM V2.0.288
 Humidity:52%
 Test Distance:5.850m [K=1.0000]
 Remarks:

UTILIZATION FACTORS TABLE

| | | |
|---|--------------------------|-------------|
| Test:U:43.80V I:0.2500A P:10.95W PF:1.000 Freq:0Hz Lamp Flux:1428.58x1 lm | | |
| NAME: FL600-GL600-11W-840 | TYPE:Linear Light | SERIAL No.: |
| SPEC.:4000K | DIM.: L600mm*W50mm*H80mm | |
| MFR.: NEKO LIGHTING AG | | |

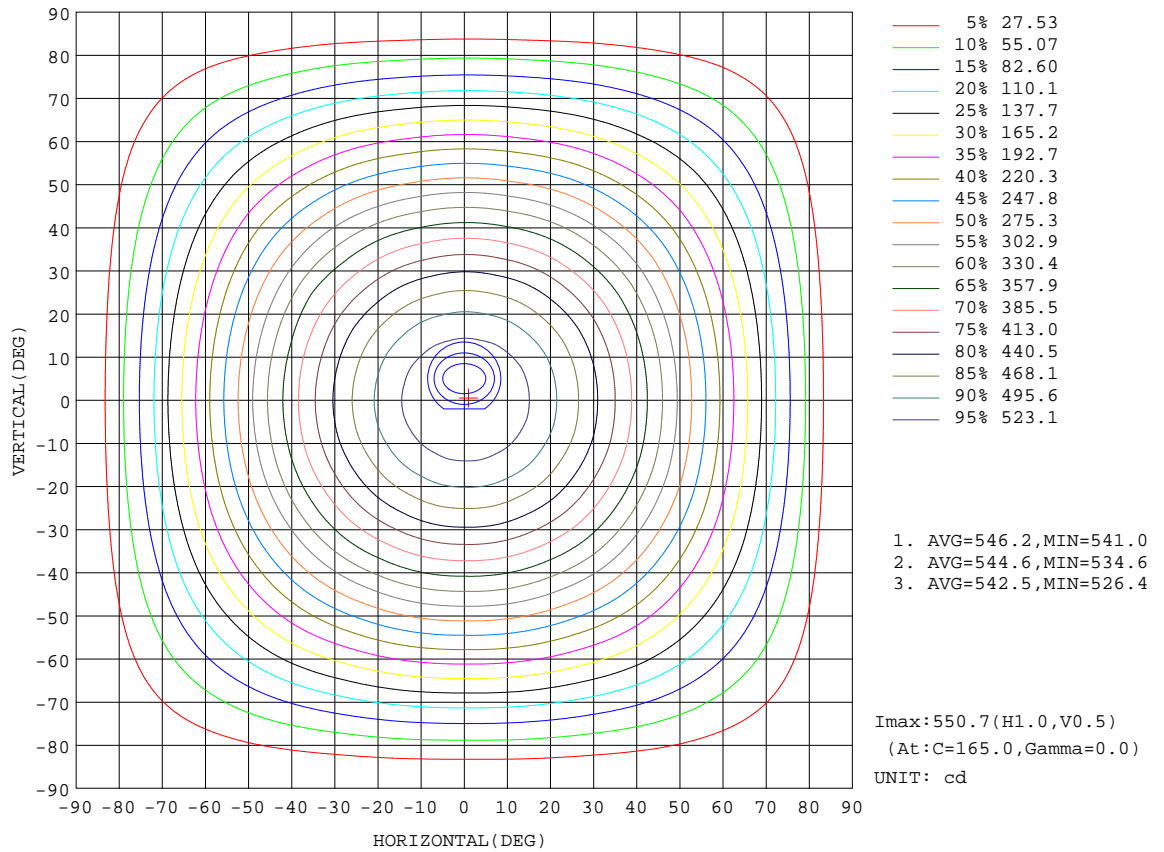
| REFLECTANCE | | | | | | | | | | |
|----------------------------------|---|-----|-----------|-----|-----|-----|---------------|-----|-----|--------|
| Ceiling | 0.8 | 0.8 | 0.8 | 0.7 | 0.7 | 0.7 | 0.5 | 0.5 | 0.5 | 0 |
| Walls | 0.7 | 0.5 | 0.3 | 0.7 | 0.5 | 0.3 | 0.7 | 0.5 | 0.3 | 0 |
| Working plane | 0.2 | 0.2 | 0.2 | 0.2 | 0.2 | 0.2 | 0.2 | 0.2 | 0.2 | 0 |
| ROOM INDEX | UTILIZATION FACTORS(PERCENT) $k(RI) \times RCR = 5$ | | | | | | | | | |
| k = 0.60 | 59 | 47 | 41 | 58 | 47 | 41 | 57 | 47 | 40 | 34 |
| 0.80 | 69 | 58 | 50 | 68 | 57 | 50 | 66 | 56 | 50 | 43 |
| 1.00 | 77 | 66 | 59 | 76 | 66 | 59 | 74 | 67 | 58 | 52 |
| 1.25 | 84 | 74 | 67 | 83 | 73 | 67 | 80 | 72 | 66 | 59 |
| 1.50 | 89 | 80 | 73 | 88 | 79 | 72 | 85 | 77 | 71 | 64 |
| 2.00 | 96 | 88 | 81 | 94 | 86 | 81 | 91 | 84 | 79 | 71 |
| 2.50 | 100 | 92 | 86 | 98 | 91 | 85 | 94 | 88 | 83 | 75 |
| 3.00 | 103 | 96 | 91 | 101 | 95 | 90 | 97 | 92 | 88 | 79 |
| 4.00 | 107 | 101 | 97 | 104 | 100 | 95 | 100 | 96 | 93 | 84 |
| 5.00 | 109 | 104 | 101 | 107 | 103 | 99 | 102 | 99 | 96 | 87 |
| ROOM INDEX | UF(total) | | | | | | | | | Direct |
| According to DIN EN 13032-2 2004 | | | Suspended | | | | SHRNOM = 1.25 | | | |

C Range: 0 - 360DEG
 C Interval: 15.0DEG
 Test Speed: HIGH
 Temperature:25.3DEG
 Operators:Meng yongjian
 Test Date:2018-04-08

γ Range: 0 - 90DEG
 γ Interval: 1.0DEG
 Test System:EVERFINE GO-2000B_V1 SYSTEM V2.0.288
 Humidity:52%
 Test Distance:5.850m [K=1.0000]
 Remarks:

ISOCANDELA DIAGRAM

| | | |
|---|--------------------------|-------------|
| Test:U:43.80V I:0.2500A P:10.95W PF:1.000 Freq:0Hz Lamp Flux:1428.58x1 lm | | |
| NAME: FL600-GL600-11W-840 | TYPE:Linear Light | SERIAL No.: |
| SPEC.:4000K | DIM.: L600mm*W50mm*H80mm | |
| MFR.: NEKO LIGHTING AG | | |



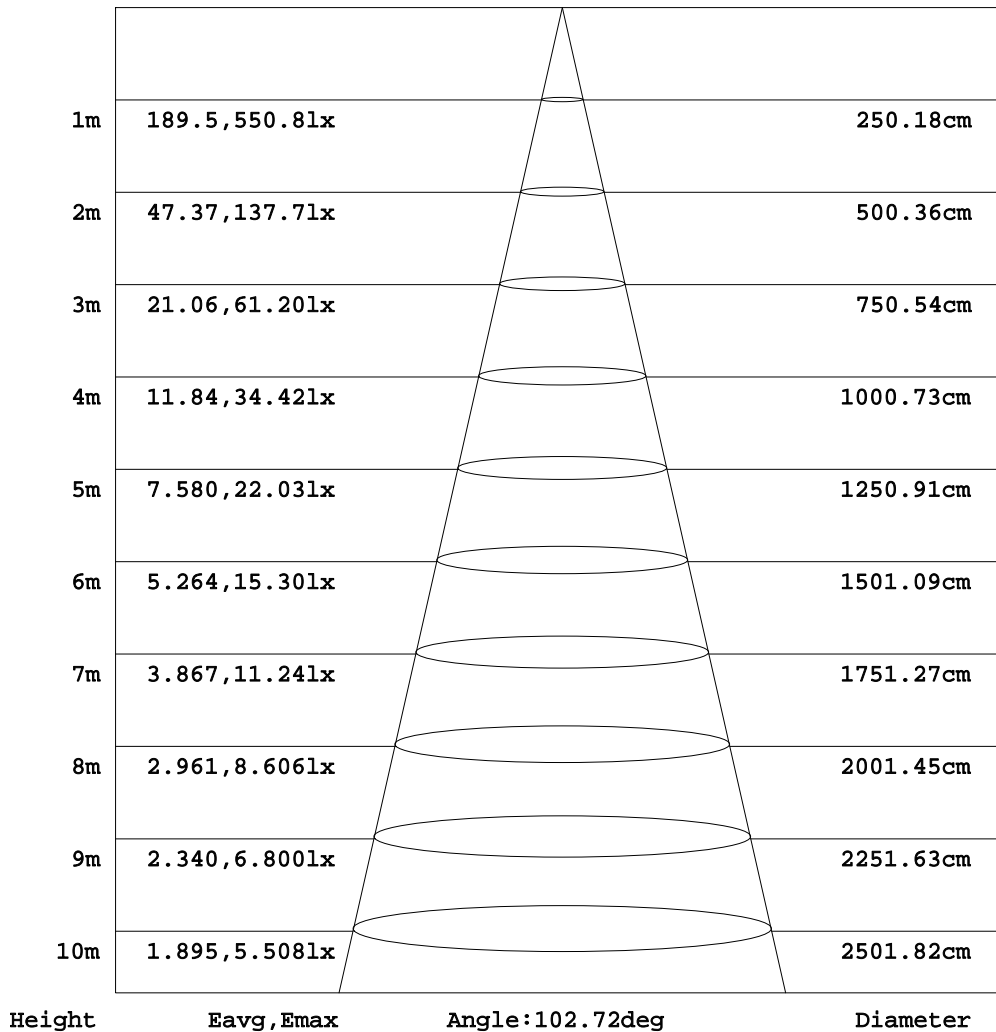
C Range: 0 - 360DEG
 C Interval: 15.0DEG
 Test Speed: HIGH
 Temperature:25.3DEG
 Operators:Meng yongjian
 Test Date:2018-04-08

γ Range: 0 - 90DEG
 γ Interval: 1.0DEG
 Test System:EVERFINE GO-2000B_V1 SYSTEM V2.0.288
 Humidity:52%
 Test Distance:5.850m [K=1.0000]
 Remarks:

AAI Figure

| | | |
|---|--------------------------|-------------|
| Test:U:43.80V I:0.2500A P:10.95W PF:1.000 Freq:0Hz Lamp Flux:1428.58x1 lm | | |
| NAME: FL600-GL600-11W-840 | TYPE:Linear Light | SERIAL No.: |
| SPEC.:4000K | DIM.: L600mm*W50mm*H80mm | |
| MFR.: NEKO LIGHTING AG | | |

Flux out:975.3 lm



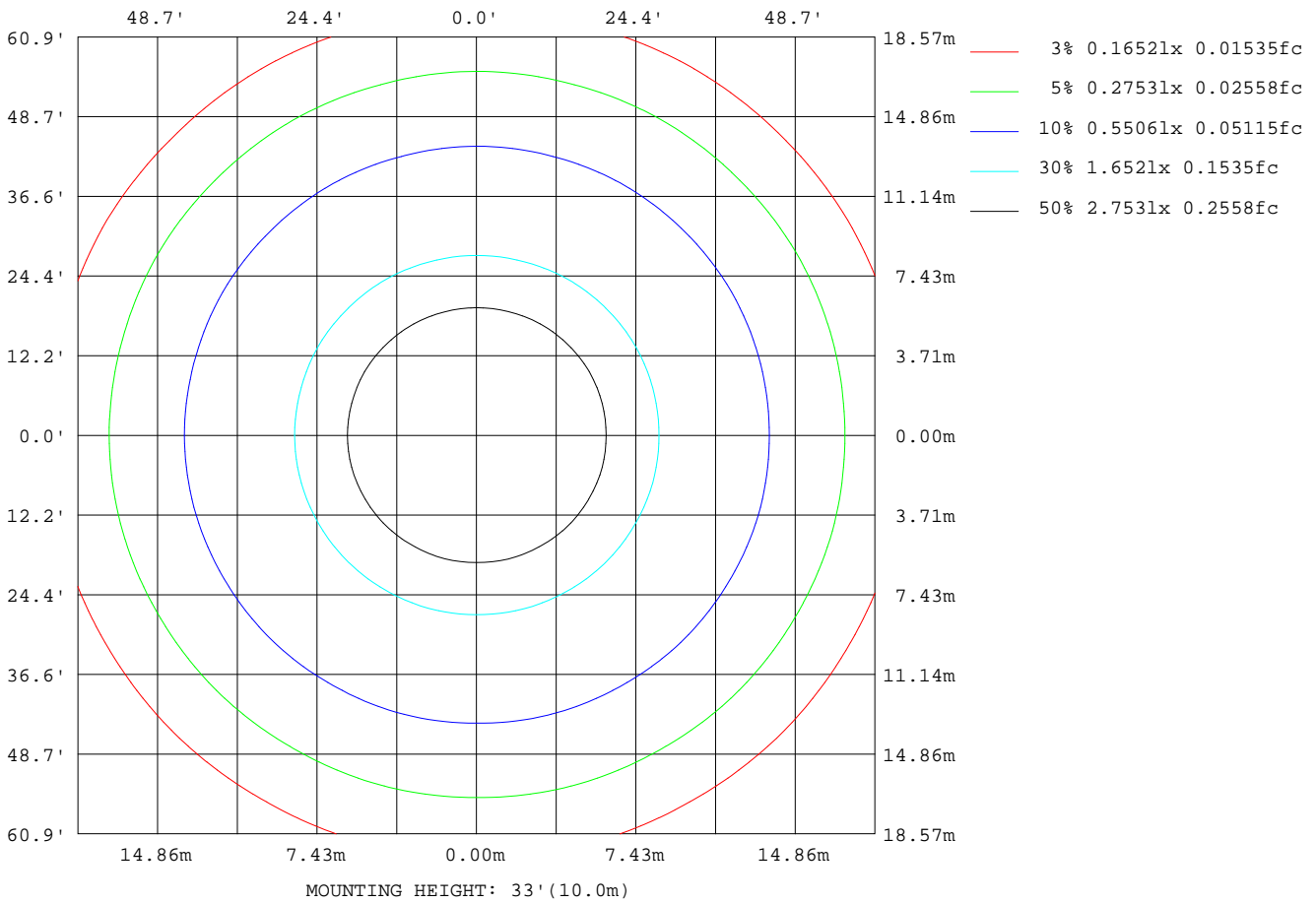
Note:The Curves indicate the illuminated area and the average illumination when the luminaire is at different distance.

C Range: 0 - 360DEG
C Interval: 15.0DEG
Test Speed: HIGH
Temperature:25.3DEG
Operators:Meng yongjian
Test Date:2018-04-08

γ Range: 0 - 90DEG
γ Interval: 1.0DEG
Test System:EVERFINE GO-2000B_V1 SYSTEM V2.0.288
Humidity:52%
Test Distance:5.850m [K=1.0000]
Remarks:

ISOLUX DIAGRAM

| | | |
|---|--------------------------|-------------|
| Test:U:43.80V I:0.2500A P:10.95W PF:1.000 Freq:0Hz Lamp Flux:1428.58x1 lm | | |
| NAME: FL600-GL600-11W-840 | TYPE:Linear Light | SERIAL No.: |
| SPEC.:4000K | DIM.: L600mm*W50mm*H80mm | |
| MFR.: NEKO LIGHTING AG | | |



C Range: 0 - 360DEG
 C Interval: 15.0DEG
 Test Speed: HIGH
 Temperature:25.3DEG
 Operators:Meng yongjian
 Test Date:2018-04-08

γ Range: 0 - 90DEG
 γ Interval: 1.0DEG
 Test System:EVERFINE GO-2000B_V1 SYSTEM V2.0.288
 Humidity:52%
 Test Distance:5.850m [K=1.0000]
 Remarks:

LED Avg.L Report

| | | |
|---|--------------------------|-------------|
| Test:U:43.80V I:0.2500A P:10.95W PF:1.000 Freq:0Hz Lamp Flux:1428.58x1 lm | | |
| NAME: FL600-GL600-11W-840 | TYPE:Linear Light | SERIAL No.: |
| SPEC.:4000K | DIM.: L600mm*W50mm*H80mm | |
| MFR.: NEKO LIGHTING AG | | |

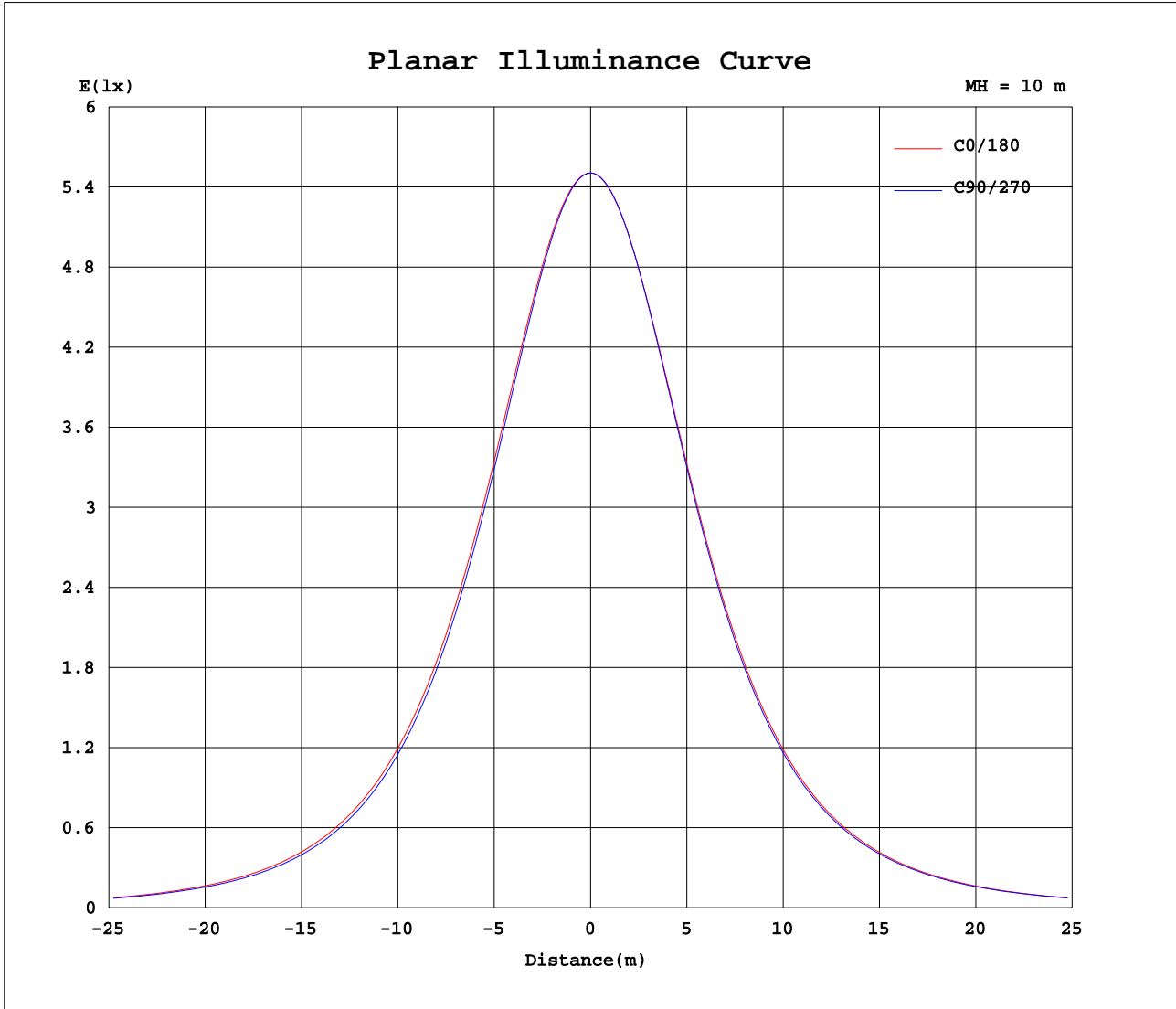
| AvgL | cd/m2 |
|----------------|-------|
| L_0~180(65)av | 12406 |
| L_0~180(75)av | 10244 |
| L_0~180(85)av | 6386 |
| L_90~270(65)av | 11871 |
| L_90~270(75)av | 9993 |
| L_90~270(85)av | 6811 |
| L_45(65)av | 12131 |
| L_45(75)av | 10140 |
| L_45(85)av | 6727 |

Standard: GB/T 29293-2012

C Range: 0 - 360DEG
C Interval: 15.0DEG
Test Speed: HIGH
Temperature:25.3DEG
Operators:Meng yongjian
Test Date:2018-04-08

γ Range: 0 - 90DEG
 γ Interval: 1.0DEG
Test System:EVERFINE GO-2000B_V1 SYSTEM V2.0.288
Humidity:52%
Test Distance:5.850m [K=1.0000]
Remarks:

Planar Illuminance Curve



C Range: 0 - 360DEG
 C Interval: 15.0DEG
 Test Speed: HIGH
 Temperature: 25.3DEG
 Operators: Meng yongjian
 Test Date: 2018-04-08

γ Range: 0 - 90DEG
 γ Interval: 1.0DEG
 Test System: EVERFINE GO-2000B_V1 SYSTEM V2.0.288
 Humidity: 52%
 Test Distance: 5.850m [K=1.0000]
 Remarks:

LUMINOUS DISTRIBUTION INTENSITY DATA

| | | |
|---|--------------------------|-------------|
| Test:U:43.80V I:0.2500A P:10.95W PF:1.000 Freq:0Hz Lamp Flux:1428.58x1 lm | | |
| NAME: FL600-GL600-11W-840 | TYPE:Linear Light | SERIAL No.: |
| SPEC.:4000K | DIM.: L600mm*W50mm*H80mm | |
| MFR.: NEKO LIGHTING AG | | |

Table--1

UNIT: cd

| C(DEG) γ (DEG) | 0 | 15 | 30 | 45 | 60 | 75 | 90 | 105 | 120 | 135 | 150 | 165 | 180 | 195 | 210 | 225 | 240 | 255 | 270 |
|--------------------|------|------|------|------|------|------|------|------|------|------|------|------|------|------|------|------|------|------|------|
| 0 | 551 | 551 | 551 | 551 | 551 | 551 | 551 | 551 | 551 | 551 | 551 | 551 | 551 | 551 | 551 | 551 | 551 | 551 | 551 |
| 5 | 548 | 548 | 548 | 548 | 547 | 547 | 547 | 547 | 547 | 547 | 547 | 547 | 547 | 547 | 547 | 547 | 547 | 547 | 548 |
| 10 | 539 | 539 | 538 | 538 | 537 | 537 | 536 | 537 | 536 | 537 | 537 | 537 | 537 | 537 | 537 | 537 | 537 | 537 | 537 |
| 15 | 523 | 524 | 523 | 522 | 521 | 520 | 519 | 520 | 519 | 520 | 520 | 521 | 521 | 521 | 521 | 520 | 521 | 520 | 521 |
| 20 | 502 | 503 | 501 | 500 | 499 | 498 | 496 | 497 | 496 | 498 | 498 | 500 | 500 | 499 | 500 | 498 | 498 | 497 | 498 |
| 25 | 477 | 477 | 475 | 474 | 471 | 470 | 469 | 469 | 469 | 470 | 472 | 473 | 474 | 473 | 473 | 472 | 471 | 470 | 471 |
| 30 | 447 | 447 | 445 | 443 | 440 | 439 | 437 | 437 | 437 | 439 | 441 | 443 | 444 | 443 | 443 | 440 | 440 | 438 | 439 |
| 35 | 413 | 413 | 411 | 409 | 405 | 404 | 402 | 402 | 402 | 405 | 406 | 409 | 410 | 409 | 409 | 406 | 405 | 404 | 404 |
| 40 | 377 | 377 | 374 | 372 | 368 | 366 | 364 | 365 | 365 | 368 | 370 | 373 | 374 | 373 | 373 | 369 | 368 | 366 | 367 |
| 45 | 338 | 338 | 335 | 333 | 329 | 327 | 325 | 326 | 326 | 329 | 331 | 334 | 335 | 334 | 334 | 331 | 330 | 327 | 328 |
| 50 | 298 | 298 | 295 | 293 | 289 | 287 | 285 | 286 | 286 | 289 | 291 | 294 | 295 | 294 | 294 | 291 | 290 | 287 | 288 |
| 55 | 256 | 257 | 253 | 251 | 247 | 246 | 244 | 245 | 245 | 248 | 250 | 253 | 254 | 254 | 253 | 250 | 249 | 246 | 247 |
| 60 | 214 | 214 | 211 | 210 | 206 | 205 | 202 | 203 | 203 | 206 | 208 | 211 | 212 | 211 | 211 | 208 | 207 | 205 | 206 |
| 65 | 171 | 172 | 169 | 168 | 164 | 163 | 161 | 162 | 162 | 164 | 165 | 168 | 169 | 168 | 168 | 166 | 166 | 164 | 165 |
| 70 | 129 | 129 | 127 | 125 | 123 | 122 | 121 | 121 | 121 | 122 | 124 | 125 | 126 | 126 | 126 | 125 | 124 | 124 | 124 |
| 75 | 87.1 | 87.3 | 86.0 | 85.6 | 84.0 | 83.5 | 82.4 | 82.7 | 82.2 | 83.1 | 83.4 | 84.5 | 85.2 | 85.0 | 85.6 | 85.2 | 85.6 | 85.1 | 85.7 |
| 80 | 48.9 | 49.4 | 48.7 | 49.2 | 48.1 | 48.3 | 47.4 | 47.8 | 46.9 | 47.4 | 47.0 | 47.5 | 47.9 | 47.8 | 49.1 | 49.2 | 50.2 | 49.8 | 50.6 |
| 85 | 17.9 | 18.3 | 18.2 | 18.8 | 18.3 | 18.6 | 18.0 | 18.2 | 17.6 | 17.9 | 17.7 | 17.9 | 18.3 | 18.3 | 19.3 | 19.4 | 20.2 | 20.0 | 20.6 |
| 90 | 0.29 | 0.29 | 0.30 | 0.30 | 0.29 | 0.29 | 0.30 | 0.35 | 0.48 | 0.59 | 0.73 | 0.78 | 0.83 | 0.78 | 0.73 | 0.67 | 0.61 | 0.58 | 0.59 |
| | | | | | | | | | | | | | | | | | | | |
| | | | | | | | | | | | | | | | | | | | |
| | | | | | | | | | | | | | | | | | | | |
| | | | | | | | | | | | | | | | | | | | |
| | | | | | | | | | | | | | | | | | | | |
| | | | | | | | | | | | | | | | | | | | |
| | | | | | | | | | | | | | | | | | | | |
| | | | | | | | | | | | | | | | | | | | |
| | | | | | | | | | | | | | | | | | | | |
| | | | | | | | | | | | | | | | | | | | |
| | | | | | | | | | | | | | | | | | | | |
| | | | | | | | | | | | | | | | | | | | |
| | | | | | | | | | | | | | | | | | | | |
| | | | | | | | | | | | | | | | | | | | |
| | | | | | | | | | | | | | | | | | | | |
| | | | | | | | | | | | | | | | | | | | |
| | | | | | | | | | | | | | | | | | | | |
| | | | | | | | | | | | | | | | | | | | |
| | | | | | | | | | | | | | | | | | | | |
| | | | | | | | | | | | | | | | | | | | |
| | | | | | | | | | | | | | | | | | | | |

C Range: 0 - 360DEG
 C Interval: 15.0DEG
 Test Speed: HIGH
 Temperature:25.3DEG
 Operators:Meng yongjian
 Test Date:2018-04-08

γ Range: 0 - 90DEG
 γ Interval: 1.0DEG
 Test System:EVERFINE GO-2000B_V1 SYSTEM V2.0.288
 Humidity:52%
 Test Distance:5.850m [K=1.0000]
 Remarks:

LUMINOUS DISTRIBUTION INTENSITY DATA

| | | |
|---|--------------------------|-------------|
| Test:U:43.80V I:0.2500A P:10.95W PF:1.000 Freq:0Hz Lamp Flux:1428.58x1 lm | | |
| NAME: FL600-GL600-11W-840 | TYPE:Linear Light | SERIAL No.: |
| SPEC.:4000K | DIM.: L600mm*W50mm*H80mm | |
| MFR.: NEKO LIGHTING AG | | |

Table--2

UNIT: cd

| C(DEG) \ γ (DEG) | 285 | 300 | 315 | 330 | 345 | | | | | | | | | | | | | | |
|----------------------|------|------|------|------|------|--|--|--|--|--|--|--|--|--|--|--|--|--|--|
| 0 | 551 | 551 | 551 | 551 | 551 | | | | | | | | | | | | | | |
| 5 | 547 | 548 | 548 | 548 | 548 | | | | | | | | | | | | | | |
| 10 | 537 | 538 | 539 | 539 | 539 | | | | | | | | | | | | | | |
| 15 | 521 | 522 | 523 | 524 | 524 | | | | | | | | | | | | | | |
| 20 | 498 | 500 | 501 | 503 | 503 | | | | | | | | | | | | | | |
| 25 | 471 | 473 | 475 | 477 | 477 | | | | | | | | | | | | | | |
| 30 | 439 | 442 | 444 | 446 | 447 | | | | | | | | | | | | | | |
| 35 | 405 | 408 | 410 | 412 | 413 | | | | | | | | | | | | | | |
| 40 | 367 | 371 | 373 | 376 | 377 | | | | | | | | | | | | | | |
| 45 | 328 | 332 | 334 | 337 | 338 | | | | | | | | | | | | | | |
| 50 | 288 | 292 | 294 | 297 | 298 | | | | | | | | | | | | | | |
| 55 | 247 | 251 | 252 | 256 | 257 | | | | | | | | | | | | | | |
| 60 | 206 | 209 | 211 | 214 | 214 | | | | | | | | | | | | | | |
| 65 | 165 | 168 | 169 | 171 | 172 | | | | | | | | | | | | | | |
| 70 | 125 | 126 | 127 | 129 | 129 | | | | | | | | | | | | | | |
| 75 | 85.8 | 86.9 | 87.3 | 88.0 | 87.7 | | | | | | | | | | | | | | |
| 80 | 50.4 | 51.2 | 50.7 | 50.8 | 49.7 | | | | | | | | | | | | | | |
| 85 | 20.4 | 20.7 | 20.2 | 19.8 | 18.7 | | | | | | | | | | | | | | |
| 90 | 0.61 | 0.44 | 0.40 | 0.33 | 0.31 | | | | | | | | | | | | | | |

| | |
|-------------------------|--|
| C Range: 0 - 360DEG | γ Range: 0 - 90DEG |
| C Interval: 15.0DEG | γ Interval: 1.0DEG |
| Test Speed: HIGH | Test System:EVERFINE GO-2000B_V1 SYSTEM V2.0.288 |
| Temperature:25.3DEG | Humidity:52% |
| Operators:Meng yongjian | Test Distance:5.850m [K=1.0000] |
| Test Date:2018-04-08 | Remarks: |