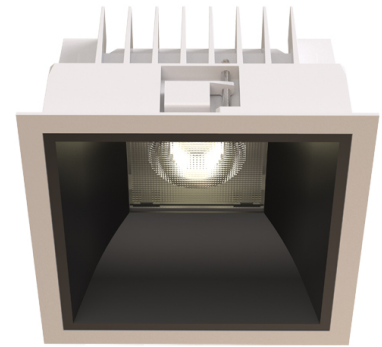


# Datasheet

## TAKEO TS150

Manufacture: NEKO LIGHTING AG

Type: TAKEO Fixed Downlight TSM1-8407018N-WB



### General

- Indoor
- Downlight
- Recessed mounted
- Version: square
- Housing: white
- Reflector: black
- IP 54

### LED

- 4000K
- CRI 80
- LED Output: 3000lm
- System Output: 1800lm
- 50000h@L80B10
- SDCM: 3



### Optics

- Beam angle: 70°
- UGR <19

### Electric

- LED Driver: none
- LED Power: 18W
- System Power: 21W
- 36V
- 500mA

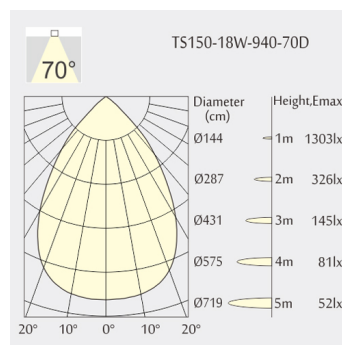
### Dimensions

- Measurement: 167mm x 167mm
- Cutout: 150mm x 150mm
- Height: 100mm
- Ceiling height: 150mm
- Net Weight: 700g
- Gross Weight: 900g

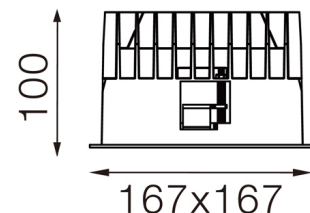
### Description

Square recessed mounted Downlight made of die-cast aluminium with white powder-coating finish (RAL 9016) and black reflector; LED 18W; measurement 167mm x 167mm; narrow mounting trim with a cutout of 150mm x 150mm; luminaire's weight is approximately 700g; CCT 4000K with an LED Output of 3000lm; decent color rendering at an index of CRI80; after a lifetime of 50000h min. 80% of the luminous flux with energy efficient CITIZEN LED Chips; 5 years warranty; wide beam characteristic with 70° beam angle; lighting perfectly suitable for reading, writing as well as computer and control work according to DIN EN 12464-1 (UGR<19); degree of housing protection according to DIN EN 60529 (IP54)

### Light distribution



### Technical drawing



150x150mm



850°C



The technical data represent rated values for an ambient temperature of 25°C. The data values for the luminous flux are initially subject to a tolerance of +/- 10%, those for the electrical connected load are initially subject to a tolerance of +/- 10%, and those for the colour temperature are initially subject to a tolerance of +/- 150 K. No liability is assumed for typographical or printing errors. The general terms and conditions of NEKO Lighting AG apply.