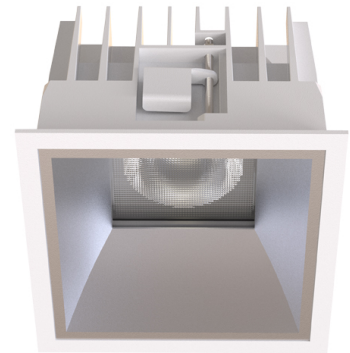


TAKEO TS100

Manufacture: NEKO LIGHTING AG

Type: TAKEO Fixed Downlight TSS1-9306009N-WM



General

- Indoor
- Downlight
- Recessed mounted
- Version: square
- Housing: white
- Reflector: matt
- IP 54

LED

- 3000K
- CRI 90
- LED Output: 1100lm
- System Output: 800lm
- 50000h@L80B10
- SDCM: 3



Optics

- Beam angle: 60°
- UGR <19

Electric

- LED Driver: none
- LED Power: 9W
- System Power: 11W
- 36V
- 250mA

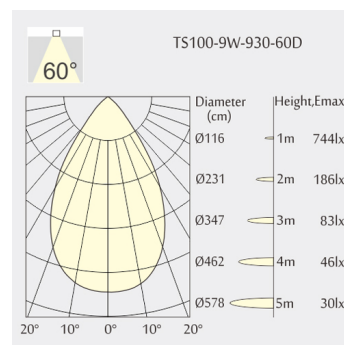
Dimensions

- Measurement: 110mm x 110mm
- Cutout: 100mm x 100mm
- Height: 79mm
- Ceiling height: 130mm
- Net Weight: 520g
- Gross Weight: 620g

Description

Square recessed mounted Downlight made of die-cast aluminium with white powder-coating finish (RAL 9016) and matt reflector; LED 9W; measurement 110mm x 110mm; narrow mounting trim with a cutout of 100mm x 100mm; luminaire's weight is approximately 520g; CCT 3000K with an LED Output of 1100lm; high color rendering at an index of CRI90; after a lifetime of 50000h min. 80% of the luminous flux with energy efficient CITIZEN LED Chips; 5 years warranty; beam characteristic with 60° beam angle; lighting perfectly suitable for reading, writing as well as computer and control work according to DIN EN 12464-1 (UGR<19); degree of housing protection according to DIN EN 60529 (IP54)

Light distribution



Technical drawing



RoHS



100x100mm



850°C



The technical data represent rated values for an ambient temperature of 25°C. The data values for the luminous flux are initially subject to a tolerance of +/- 10%, those for the electrical connected load are initially subject to a tolerance of +/- 10%, and those for the colour temperature are initially subject to a tolerance of +/- 150 K. No liability is assumed for typographical or printing errors. The general terms and conditions of NEKO Lighting AG apply.