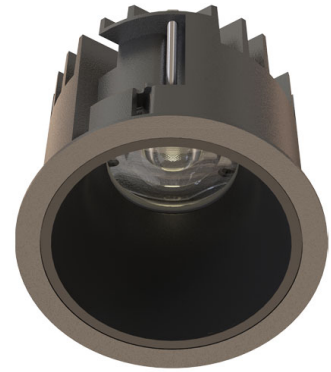


# Datasheet

## TAKEO T75

Manufacture: NEKO LIGHTING AG

Type: TAKEO Fixed Downlight TT1-8275008N-BB



### General

- Indoor
- Downlight
- Recessed mounted
- Version: round
- Housing: black
- Reflector: black
- IP 54

### LED

- 2700K
- CRI 80
- LED Output: 1000lm
- System Output: 700lm
- 50000h@L80B10
- SDCM: 3



### Optics

- Beam angle: 50°
- UGR <19

### Electric

- LED Driver: none
- LED Power: 7.5W
- System Power: 9W
- 31V
- 250mA

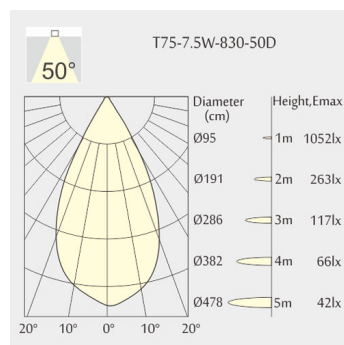
### Dimensions

- Measurement: Ø84mm
- Cutout: Ø75mm
- Height: 72mm
- Ceiling height: 122mm
- Net Weight: 280g
- Gross Weight: 340g

### Description

Round recessed mounted downlight made of die-cast aluminium with black powder-coating finish (RAL 9005) and black reflector; LED 7.5W; measurement Ø84mm; narrow mounting trim with a cutout of Ø75mm; luminaire's weight is approximately 280g; CCT 2700K with an LED Output of 1000lm; decent color rendering at an index of CRI80; after a lifetime of 50000h min. 80% of the luminous flux with energy efficient CITIZEN LED Chips; 5 years warranty; beam characteristic with 50° beam angle; lighting perfectly suitable for reading, writing as well as computer and control work according to DIN EN 12464-1 (UGR<19); degree of housing protection according to DIN EN 60529 (IP54)

### Light distribution



### Technical drawing



RoHS



Ø75mm



850°C



The technical data represent rated values for an ambient temperature of 25°C. The data values for the luminous flux are initially subject to a tolerance of +/- 10%, those for the electrical connected load are initially subject to a tolerance of +/- 10%, and those for the colour temperature are initially subject to a tolerance of +/- 150 K. No liability is assumed for typographical or printing errors. The general terms and conditions of NEKO Lighting AG apply.