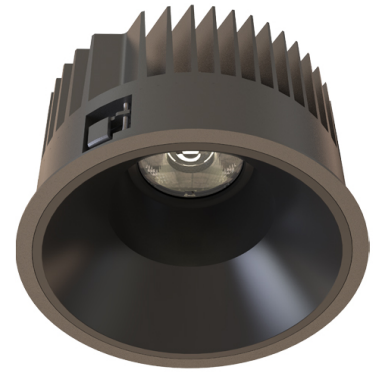


## TAKEO T200

Manufacture: NEKO LIGHTING AG

Type: TAKEO Fixed Downlight TL2-9403038N-BB



### General

- Indoor
- Downlight
- Recessed mounted
- Version: round
- Housing: black
- Reflector: black
- IP 54

### LED

- 4000K
- CRI 90
- LED Output: 4800lm
- System Output: 3900lm
- 50000h@L80B10
- SDCM: 3



### Optics

- Beam angle: 30°
- UGR <19

### Electric

- LED Driver: none
- LED Power: 38W
- System Power: 42W
- 36V
- 1050mA

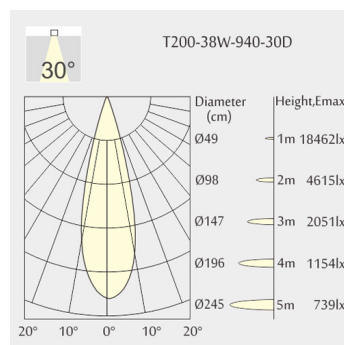
### Dimensions

- Measurement: Ø218mm
- Cutout: Ø200mm
- Height: 132mm
- Ceiling height: 180mm
- Net Weight: 1700g
- Gross Weight: 2000g

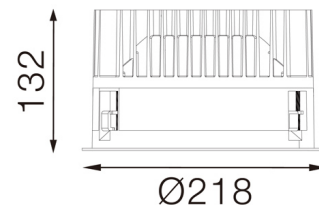
### Description

Round recessed mounted Downlight made of die-cast aluminium with black powder-coating finish (RAL 9005) and black reflector; LED 38W; measurement Ø218mm; narrow mounting trim with a cutout of Ø200mm; luminaire's weight is approximately 1700g; CCT 4000K with an LED Output of 4800lm; high color rendering at an index of CRI90; after a lifetime of 50000h min. 80% of the luminous flux with energy efficient CITIZEN LED Chips; 5 years warranty; beam characteristic with 30° beam angle; lighting perfectly suitable for reading, writing as well as computer and control work according to DIN EN 12464-1 (UGR<19); degree of housing protection according to DIN EN 60529 (IP54)

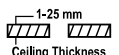
### Light distribution



### Technical drawing



RoHS



Ø200mm



850°C



The technical data represent rated values for an ambient temperature of 25°C. The data values for the luminous flux are initially subject to a tolerance of +/- 10%, those for the electrical connected load are initially subject to a tolerance of +/- 10%, and those for the colour temperature are initially subject to a tolerance of +/- 150 K. No liability is assumed for typographical or printing errors. The general terms and conditions of NEKO Lighting AG apply.