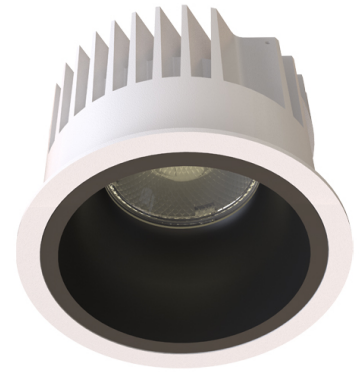


# Datasheet

## TAKEO T100

Manufacture: NEKO LIGHTING AG

Type: TAKEO Fixed Downlight TS2-8305013N-WB



### General

- Indoor
- Downlight
- Fixed
- Recessed
- Version: round
- Housing: white
- Reflector: black
- IP 54

### LED

- 3000K
- CRI 80
- LED Output: 1800lm
- System Output: 1300lm
- 50000h@L80B10
- SDCM: 3



### Optics

- Beam angle: 50°
- UGR <19

### Electric

- LED Driver: none
- LED Power: 13W
- System Power: 15W
- 36V
- 350mA

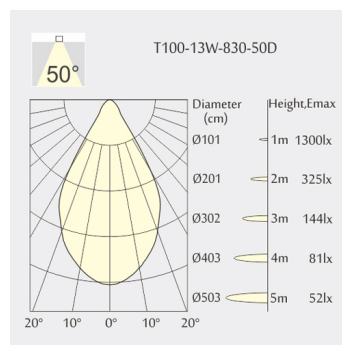
### Dimensions

- Measurement: Ø110mm
- Cutout: Ø100mm
- Height: 79mm
- Ceiling height: 130mm
- Net Weight: 420g
- Gross Weight: 520g

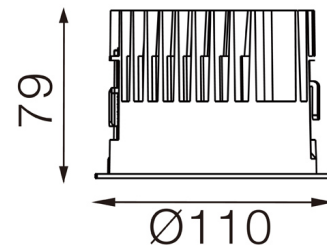
### Description

Round recessed downlight made of die-cast aluminium with white powder-coating finish (RAL 9016) and black reflector; LED 13W; measurement Ø110mm; narrow mounting trim with a cutout of Ø100mm; luminaire's weight is approximately 420g; CCT 3000K with an LED Output of 1800lm; decent color rendering at an index of CRI80; after a lifetime of 50000h min. 80% of the luminous flux with energy efficient CITIZEN LED Chips; 5 years warranty; beam characteristic with 50° beam angle; lighting perfectly suitable for reading, writing as well as computer and control work according to DIN EN 12464-1 (UGR<19); degree of housing protection according to DIN EN 60529 (IP54)

### Light distribution



### Technical drawing



RoHS



Ø100mm



850°C



The technical data represent rated values for an ambient temperature of 25°C. The data values for the luminous flux are initially subject to a tolerance of +/- 10%, those for the electrical connected load are initially subject to a tolerance of +/- 10%, and those for the colour temperature are initially subject to a tolerance of +/- 150 K. No liability is assumed for typographical or printing errors. The general terms and conditions of NEKO Lighting AG apply.