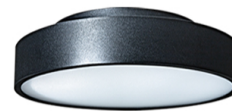


# Datasheet

## GAME 350



Manufacture: NEKO LIGHTING AG

Type: GAME Ceiling Light GASM-8279012P-BN

### General

- Indoor
- Ceiling Light
- Ceiling mounted
- Version: round
- Housing: black
- Reflector: none
- System Output: 1300lm
- IP 40

### LED

- 2700K
- CRI80
- 1800lm
- 50000h@L80B10
- SDCM: 3

### Optics

- Beam angle: 90°
- UGR <19

### Electric

- LED Driver: Phase Dim
- LED Power: 12W
- System Power: 14W
- 36V
- 350mA

### Dimensions

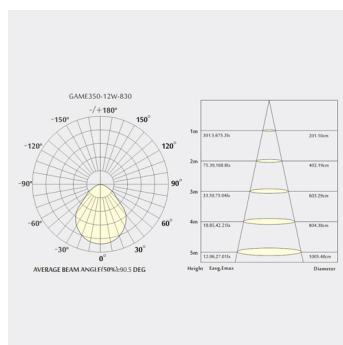
- Measurement: Ø350mm
- Height: 78mm
- Net Weight: 220g
- Gross Weight: 2900g

### Description

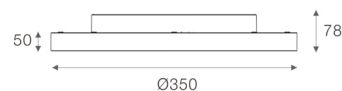
Round ceiling mounted luminaire made of die-cast-aluminium with black powder-coating finish (RAL 9005); Phase Dim Driver; LED 12W; measurement Ø350mm; luminaire's weight is approximately 2200g; CCT 2700K with an LED Output of 1800lm; decent color rendering at an index of CRI80; after a lifetime of 50000h min. 80% of the luminous flux with energy efficient OSRAM LED Chips; 5 years warranty; wide beam characteristic with 90° beam angle; lighting perfectly suitable for reading, writing as well as computer and control work according to DIN EN 12464-1 (UGR<19); degree of housing protection according to DIN EN 60529 (IP40)

**OSRAM**

### Light distribution



### Technical drawing



RoHS



The technical data represent rated values for an ambient temperature of 25°C. The data values for the luminous flux are initially subject to a tolerance of +/- 10%, those for the electrical connected load are initially subject to a tolerance of +/- 10%, and those for the colour temperature are initially subject to a tolerance of +/- 150 K. No liability is assumed for typographical or printing errors. The general terms and conditions of NEKO Lighting AG apply.