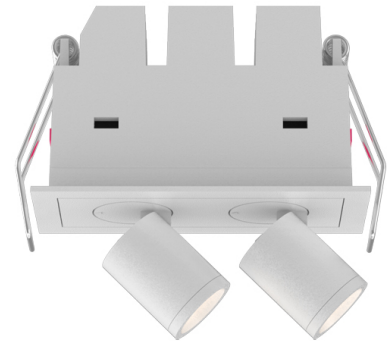


FUSION FS2

Manufacture: NEKO LIGHTING AG

Type: FUSION Adjustable Spotlight FS2-9303004N-WN



General

- Indoor
- Spotlight
- Recessed mounted
- Version: square
- Housing: white
- Reflector: none
- IP 20

LED

- 3000K
- CRI 90
- LED Output: 450lm
- System Output: 300lm
- 50000h@L80B10
- SDCM: 3

OSRAM

Optics

- Beam angle: 30°
- UGR <19

Electric

- LED Driver: none
- LED Power: 4W
- System Power: 6W
- 6.5V
- 700mA

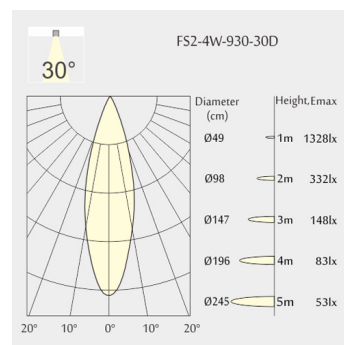
Dimensions

- Measurement: 98mm x 45mm
- Cutout: 90mm x 37mm
- Height: 60mm
- Ceiling height: 120mm
- Net Weight: 300g
- Gross Weight: 360g
- Pivot: max. 90°
- Rotation: 355°

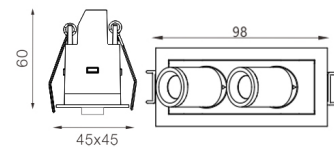
Description

Square recessed ceiling spotlight made of die-cast aluminium with white powder-coating finish (RAL 9016); LED 4W; measurement 98mm x 45mm; ceiling cutout of 90mm x 37mm with a narrow mounting trim; luminaire's weight is approximately 300g; rotation 355° and pivot max. 90°; CCT 3000K with an LED Output of 450lm; high color rendering at an index of CRI90; after a lifetime of 50000h min. 80% of the luminous flux with energy efficient OSRAM LED Chips; 5 years warranty; beam characteristic with 30° beam angle; lighting perfectly suitable for reading, writing as well as computer and control work according to DIN EN 12464-1 (UGR<19); degree of housing protection according to DIN EN 60529 (IP20)

Light distribution



Technical drawing



RoHS



90x37mm



The technical data represent rated values for an ambient temperature of 25°C. The data values for the luminous flux are initially subject to a tolerance of +/- 10%, those for the electrical connected load are initially subject to a tolerance of +/- 10%, and those for the colour temperature are initially subject to a tolerance of +/- 150 K. No liability is assumed for typographical or printing errors. The general terms and conditions of NEKO Lighting AG apply.