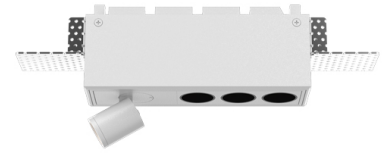


## FUSION FF3-FS1



Manufacture: NEKO LIGHTING AG

Type: FUSION Adjustable Spotlight FFS3-9402409N-WB

### General

- Indoor
- Spotlight
- Recessed mounted
- Version: trimless square
- Housing: white
- Reflector: black
- IP 20

### LED

- 4000K
- CRI 90
- LED Output: 900lm
- System Output: 600lm
- 50000h@L80B10
- SDCM: 3

**OSRAM**

### Optics

- Beam angle: 24°
- UGR <19

### Electric

- LED Driver: none
- LED Power: 9W
- System Power: 11W
- 13V
- 700mA

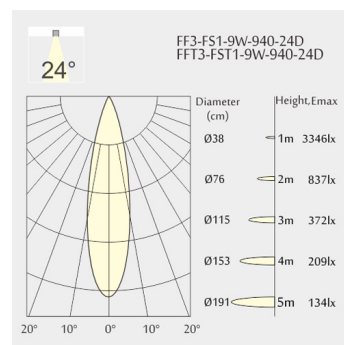
### Dimensions

- Measurement: 150mm x 41mm
- Cutout: 152mm x 44mm
- Height: 62.5mm
- Ceiling height: 120mm
- Net Weight: 500g
- Gross Weight: 600g
- Pivot: max. 90°
- Rotation: 355°

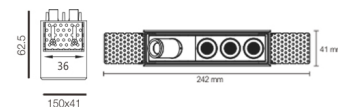
### Description

Square recessed ceiling spotlight made of die-cast aluminium with white powder-coating finish (RAL 9016) and black reflector; LED 9W; measurement 150mm x 41mm; ceiling cutout of 152mm x 37mm with a trimless mounting; luminaire's weight is approximately 500g; CCT 4000K with an LED Output of 900lm; high color rendering at an index of CRI90; after a lifetime of 50000h min. 80% of the luminous flux with energy efficient OSRAM LED Chips; 5 years warranty; narrow beam characteristic with 24° beam angle; lighting perfectly suitable for reading, writing as well as computer and control work according to DIN EN 12464-1 (UGR<10); degree of housing protection according to DIN EN 60529 (IP20)

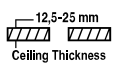
### Light distribution



### Technical drawing



RoHS



152x44mm



The technical data represent rated values for an ambient temperature of 25°C. The data values for the luminous flux are initially subject to a tolerance of +/- 10%, those for the electrical connected load are initially subject to a tolerance of +/- 10%, and those for the colour temperature are initially subject to a tolerance of +/- 150 K. No liability is assumed for typographical or printing errors. The general terms and conditions of NEKO Lighting AG apply.