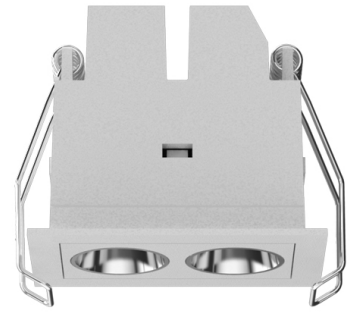


# Datasheet

## FUSION FF2

Manufacture: NEKO LIGHTING AG

Type: FUSION Fixed Downlight FF2-8304004N-WS



### General

- Indoor
- Downlight
- Recessed mounted
- Version: square
- Housing: white
- Reflector: specular
- IP 20

### LED

- 3000K
- CRI 80
- LED Output: 500lm
- System Output: 400lm
- 50000h@L80B10
- SDCM: 3

**OSRAM**

### Optics

- Beam angle: 40°
- UGR <10

### Electric

- LED Driver: none
- LED Power: 4W
- System Power: 6W
- 6.5V
- 700mA

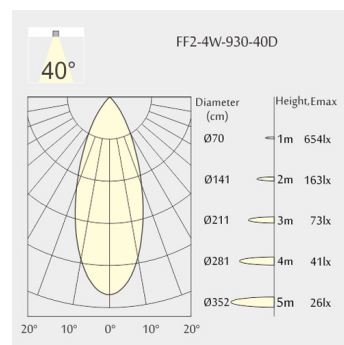
### Dimensions

- Measurement: 70mm x 45mm
- Cutout: 62mm x 37mm
- Height: 60mm
- Ceiling height: 120mm
- Net Weight: 120g
- Gross Weight: 220g

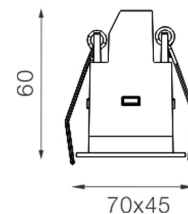
### Description

Square recessed ceiling downlight made of die-cast aluminium with white powder-coating finish (RAL 9016) and specular reflector; LED 4W; measurement 70mm x 45mm; ceiling cutout of 62mm x 37mm with a narrow mounting trim; luminaire's weight is approximately 120g; CCT 3000K with an LED Output of 500lm; decent color rendering at an index of CRI80; after a lifetime of 50000h min. 80% of the luminous flux with energy efficient OSRAM LED Chips; 5 years warranty; beam characteristic with 40° beam angle; lighting perfectly suitable for reading, writing as well as computer and control work according to DIN EN 12464-1 (UGR<10); degree of housing protection according to DIN EN 60529 (IP20)

### Light distribution



### Technical drawing



RoHS



62x37mm



The technical data represent rated values for an ambient temperature of 25°C. The data values for the luminous flux are initially subject to a tolerance of +/- 10%, those for the electrical connected load are initially subject to a tolerance of +/- 10%, and those for the colour temperature are initially subject to a tolerance of +/- 150 K. No liability is assumed for typographical or printing errors. The general terms and conditions of NEKO Lighting AG apply.