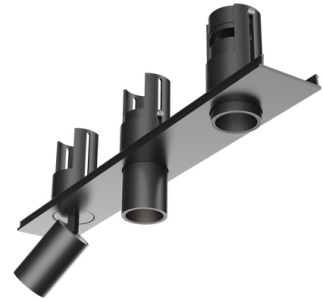


FL SL450-3S

Manufacture: NEKO LIGHTING AG

Type: FUSION Linear System SL450-3S-13W-830-15D-BB



General

- Indoor
- Spotlight
- Profile insert
- Version: square
- Housing: black
- Reflector: black
- IP 40

LED

- 3000K
- CRI 80
- LED Output: 1300lm
- System Output: 1000lm
- 50000h@L80B10
- SDCM: 3



Optics

- Beam angle: 15°
- UGR <19

Electric

- LED Driver: none
- LED Power: 13W
- System Power: 15W
- 36V
- 350mA

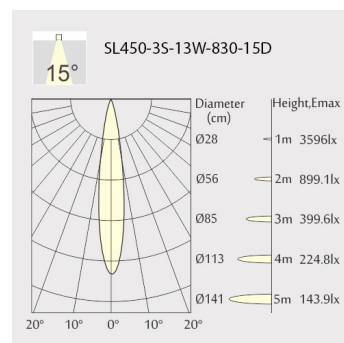
Dimensions

- Measurement: 450mm x 45mm
- Height: 73mm
- Net Weight: 380g
- Gross Weight: 400g
- Pivot: 90°
- Rotation: 360°

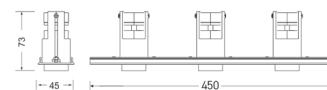
Description

FUSION Linear Spotlight Module with three spotlights as profile inserts; black surface (RAL 9005) and black reflector LED 13W; measurement 450mm x 45mm; spotlight's weight is approximately 380g; rotation 360° and pivot max. 90°; CCT 3000K with an LED Output of 1300lm; decent color rendering at an index of CRI80; after a lifetime of 50000h min. 80% of the luminous flux with energy efficient CREE LED Chips; 5 years warranty; narrow beam characteristic with 15° beam angle; lighting perfectly suitable for reading, writing as well as computer and control work according to DIN EN 12464-1 (UGR<19); degree of housing protection according to DIN EN 60529 (IP40)

Light distribution



Technical drawing



CB

CE

RoHS



The technical data represent rated values for an ambient temperature of 25°C. The data values for the luminous flux are initially subject to a tolerance of +/- 10%, those for the electrical connected load are initially subject to a tolerance of +/- 10%, and those for the colour temperature are initially subject to a tolerance of +/- 150 K. No liability is assumed for typographical or printing errors. The general terms and conditions of NEKO Lighting AG apply.