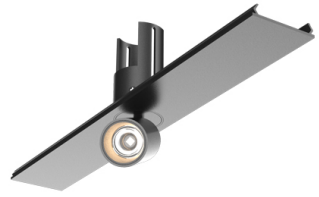


Datasheet

FL SL300-1S



Manufacture: NEKO LIGHTING AG

Type: FUSION Linear System SL300-1S-4W-927-30D-BB

General

- Indoor
- Spotlight
- Profile insert
- Version: square
- Housing: black
- Reflector: black
- IP 40

LED

- 2700K
- CRI 90
- LED Output: 300lm
- System Output: 200lm
- 50000h@L80B10
- SDCM: 3



Optics

- Beam angle: 30°
- UGR <19

Electric

- LED Driver: none
- LED Power: 4W
- System Power: 6W
- 12V
- 350mA

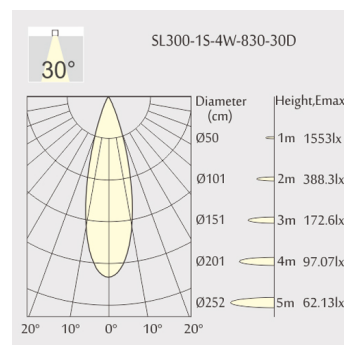
Dimensions

- Measurement: 300mm x 45mm
- Height: 73mm
- Net Weight: 180g
- Gross Weight: 200g
- Pivot: 90°
- Rotation: 360°

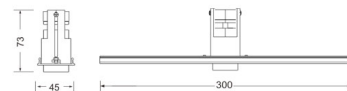
Description

FUSION Linear Spotlight Module with one spotlight as profile insert; black surface (RAL 9005) and black reflector; LED 4W; measurement 300mm x 45mm; spotlight's weight is approximately 180g; rotation 360° and pivot max. 90°; CCT 2700K with an LED Output of 300lm; high color rendering at an index of CRI90; after a lifetime of 50000h min. 80% of the luminous flux with energy efficient CREE LED Chips; 5 years warranty; beam angle of 30°; lighting perfectly suitable for reading, writing as well as computer and control work according to DIN EN 12464-1 (UGR<19); degree of housing protection according to DIN EN 60529 (IP40)

Light distribution



Technical drawing



CB

CE

RoHS



The technical data represent rated values for an ambient temperature of 25°C. The data values for the luminous flux are initially subject to a tolerance of +/- 10%, those for the electrical connected load are initially subject to a tolerance of +/- 10%, and those for the colour temperature are initially subject to a tolerance of +/- 150 K. No liability is assumed for typographical or printing errors. The general terms and conditions of NEKO Lighting AG apply.